



**IATSE**  
OFFICIAL  
**Bulletin**

FOURTH QUARTER, 2010

NUMBER 630

**IATSE LOCALS PLAY A KEY ROLE  
IN THE MID-TERM ELECTIONS**

**LABOR**  
**2010**

# IATSE OFFICIAL Bulletin

FOURTH QUARTER, 2010

NUMBER 630

## FEATURES

**9 IATSE Goes Green**  
New Email Subscription Program

**18 Labor 2010**  
IATSE Locals Play A Key Role



**INTERNATIONAL ALLIANCE OF THEATRICAL  
STAGE EMPLOYEES, MOVING PICTURE  
TECHNICIANS, ARTISTS AND ALLIED CRAFTS  
OF THE UNITED STATES, ITS TERRITORIES  
AND CANADA, AFL-CIO, CLC**

**EXECUTIVE OFFICERS**

<b>Matthew D. Loeb</b> International President	<b>James B. Wood</b> General Secretary-Treasurer
<b>Thomas C. Short</b> International President Emeritus	<b>Michael W. Proscia</b> General Secretary- Treasurer Emeritus
<b>Edward C. Powell</b> International Vice President Emeritus	

<b>Timothy F. Magee</b> 1st Vice President 20017 Van Dyke Detroit, MI 48234	<b>Brian J. Lawlor</b> 7th Vice President 1430 Broadway, 20th Floor New York, NY 10018
<b>Michael Barnes</b> 2nd Vice President 2237 Hartranft St., Philadelphia, PA 19145	<b>Michael F. Miller, Jr.</b> 8th Vice President 10045 Riverside Drive Toluca Lake, CA 91602
<b>J. Walter Cahill</b> 3rd Vice President 5010 Rugby Avenue Bethesda, MD 20814	<b>John T. Beckman, Jr.</b> 9th Vice President 1611 S. Broadway, #110 St. Louis, MO 63104
<b>Thom Davis</b> 4th Vice President 2520 West Olive Avenue Burbank, CA 91505	<b>Daniel DiTolla</b> 10th Vice President 1430 Broadway, 20th Floor New York, NY 10018
<b>Anthony M. DePaulo</b> 5th Vice President 1430 Broadway, 20th Floor New York, NY 10018	<b>John Ford</b> 11th Vice President 326 West 48th Street New York, NY 10036
<b>Damian Petti</b> 6th Vice President 201-208 57th Ave., S.W. Calgary, Alberta Canada T2H 2K8	<b>John M. Lewis</b> 12th Vice President 22 St. Joseph Street Toronto, Ontario Canada M4Y 1J9

**Craig Carlson**  
13th Vice President  
216 S. Jefferson St., #400  
Chicago, IL 60661

**TRUSTEES**

<b>Thomas J. Cleary</b> 216 S. Jefferson St., #400 Chicago, IL 60661	<b>C. Faye Harper</b> 2695 Dayview Lane Atlanta, GA 30331
--	---

**George Palazzo**  
1811 W. Burbank Blvd., Burbank, CA 91506

**CLC DELEGATE**

**Kelly Moon**  
1640 Boundary Road, Burnaby, BC V5K 4V4

**GENERAL COUNSEL**

**Dale W. Short**

**GENERAL OFFICE**

1430 Broadway, 20th Floor, New York, NY 10018  
Tele: (212) 730-1770  
FAX: Office of the President (212) 730-7809  
FAX: General Secretary-Treasurer (212) 921-7699

**WEST COAST OFFICE**

10045 Riverside Drive  
Toluca Lake, CA 91602  
Tele: (818) 980-3499 FAX: (818) 980-3496

**CANADIAN OFFICE**

22 St. Joseph St.  
Toronto, Ontario, Canada M4Y 1J9  
Tele: (416) 362-3569 FAX: (416) 362-3483

**CANADIAN  
ENTERTAINMENT INDUSTRY  
RETIREMENT PLAN**

22 St. Joseph St.  
Toronto, Ontario, Canada M4Y 1J9  
Tele: (416) 362-2665 FAX: (416) 362-2351  
www.ceirp.ca

**I.A.T.S.E. NATIONAL  
BENEFIT FUNDS OFFICE**

417 Fifth Avenue, Third Floor, New York, NY 10016  
Tele: (212) 580-9092 Toll free: (800) 456-FUND  
FAX: (212) 787-3607  
www.iatsenbf.org

**DEPARTMENTS**

- |  |  |
|--|--|
| <b>4</b> President's<br>Newsletter                 | <b>16</b> On Location  |
| <b>5</b> General Secretary-<br>Treasurer's Message | <b>28</b> On Stage In Focus  |
| <b>6</b> IATSE and Labor<br>Movement News          | <b>30</b> On The Road  |
| <b>10</b> Safety Zone                              | <b>33</b> On The Show Floor  |
| <b>12</b> Local News & Views                       | <b>34</b> In Memoriam  |
|  | <b>37</b> Directory of Local<br>Secretaries and<br>Business Agents |

**WWW.IATSE-INTL.ORG**

<b>James B. Wood</b> Editor	<b>MaryAnn Kelly</b> Assistant to the Editor	<b>David Geffner</b> Special Asst. to the Editor	<b>Arthur Bracco</b> Staff Writer
--------------------------------	---	---	--------------------------------------

The OFFICIAL BULLETIN (ISSN-0020-5885) is published quarterly by the General Secretary-Treasurer of the International Alliance of Theatrical Stage Employees, Moving Picture Technicians, Artists and Allied Crafts of the United States, its Territories and Canada, (IATSE), 1430 Broadway, 20th Floor, New York, NY 10018. Telephone: (212) 730-1770. FAX (212) 921-7699. Email: bulletin@iatse-intl.org

Material for publication must be received before the first day of January, April, July, and October, to meet deadlines, respectively, for the First, Second, Third, and Fourth Quarter issues.

POSTMASTER: Send address change to the OFFICIAL BULLETIN, 1430 Broadway, 20th Floor, New York, NY 10018. Entered as periodical postage paid matter at the Post Office at New York, NY and additional locations.

Canadian Publications Mail Agreement No.: 40845543. Return Undeliverable Canadian Addresses To: PO Box 503, RPO West Beaver Creek, Richmond Hill ON L4B 4R6

Subscriptions: IATSE members receive the OFFICIAL BULLETIN as part of their IATSE membership services. Nonmembers may subscribe for \$10.00 per year.



**BULLETIN AND PHOTO SUBMISSION GUIDELINES**

Please send your Bulletin submissions to [bulletin@iatse-intl.org](mailto:bulletin@iatse-intl.org)

All digital photos should be taken with a camera that is at least 3 megapixels or higher, and set on the highest quality/resolution setting.

JPEG or TIFF file formats only please.

Please do not crop or otherwise modify photos - the original version usually has the highest quality.



## Where Do We Go From Here?

**B**rothers and Sisters, last month we saw less than positive results on Election Day. But we must move forward and begin the fight all over again – for working families, for jobs, for building the middle class, for protecting retirement security and so much more. Across the nation, 64 percent of union members voted for union-endorsed candidates, but for millions of union families who voted in the midterm elections, and for the hundreds of thousands of union volunteers who spent hours working for working family candidates, the election results were disappointing.

The American people expressed their anger at everyone in Washington regardless of which side of the aisle they sat on, and for good reason. The pain of the economic collapse that has been paid for with jobs, homes and sometimes hope, was too much to bear and the election results demonstrated the anger and a cry for help. But more important than the anger expressed, were feelings of anxiety. Worry about the future of employment, stable retirements and the chance for children and generations to come to enjoy the same shared prosperity of their parents and grandparents. It was about the economy and jobs and a mandate to fix the economy and create jobs.

The midterm elections give pause to reflect on the shared obligation among people, and between markets and government to create a prosperous and forward-looking society. I am proud and grateful to all our IATSE members and local unions that knew the importance of the elections and felt a sense of obligation to get out and walk precincts, participate in phone banking, leafleting and so much more. I have received reports from District Secretaries and local unions all over the country and those reports indicate that the efforts our members put forth to get out the vote leading up to November 2nd were outstanding. Regardless of the outcome, from Florida to California and in other key states like Ohio, New York, Pennsylvania, Nevada and Colorado, IATSE members were out in full support of labor-friendly candidates.

We must now be watchful over how the coming power-shift in Congress, especially in the House, will affect those issues closest to us, particularly in the area of piracy and our efforts to curb the theft of intellectual property. The Obama administration has been sympathetic to our cause, but committee leaderships in Congress will change and it is our responsi-

*Continued on page 8*

### OFFICIAL NOTICE

**This is to advise that the regular Mid-Winter Meeting of the General Executive Board is scheduled to be held at Paris Las Vegas, 3655 Las Vegas Blvd. South, Las Vegas, NV 89109 at 10:00 a.m. on Monday, January 24, 2011, and will remain in session through and including Friday, January 28, 2011. All business to come before the Board must be submitted to the General Office no later than fifteen (15) days prior to the meeting.**

**Local Union representatives planning to attend the meeting must make hotel reservations with Paris Las Vegas by calling 877-796-2096 or 800-722-5597. Guest room rate for the IATSE is \$109.00, plus applicable taxes, for both single and double occupancy. In order to ensure that you receive the preferred room rate established for our meeting, you must identify your affiliations with the IATSE.**

**Cut-off date: December 31, 2010**

## We Are Off To A Great Start

**M**My message in the previous issue of the Official Bulletin focused on our new Member Email initiative which was successfully launched at the beginning of October. Based on that message, many of you took the time to go to the International's Web site ([www.iatse-intl.org](http://www.iatse-intl.org)) and registered individually.

In addition to the individual registration option, we also solicited the assistance of our local unions by asking them to supply us with the Email addresses of their members in order that we could send a registration message to them. Thus far, thirty-five local unions have provided us with the requested information (see page 9 for a complete listing) and a registration Email message from the International has gone out to over 15,000 members. Thousands of our members have now completed the brief verification process and have been added to our general correspondence electronic distribution list.

After the initial registration, many members also took the next step and logged into their newly created account to manage their electronic distribution profile. These members are now registered to receive various International publications, including the Official Bulletin, in electronic form. For them, this may represent the first issue of the Official Bulletin that they are reading on a computer screen or some other mobile device. Congratulations and welcome to our newest form of distribution.

Some of you may have registered to receive an electronic copy and are surprised that you also received a paper copy. This has to do with timing and the requirement for us to provide our address labels a few weeks prior to you receiving the Official Bulletin in the mail. If your registration for electronic distribution occurred after that time then this will be the last paper version you receive. If any member would like to see an electronic version of the Official Bulletin before registering, go to the International's Web site and click on the link in the bottom right.

In addition to the Member Email initiative, almost 150 local unions are now using the International's Web-enabled Online Membership Database System. This program makes it possible for local union Secretaries and Treasurers to change much of their communication with the General Office from a paper environment to that of an online one. Locals are able to file Quarterly Reports, update member information and place orders for per capita stamps and supplies online over a secure network connection. If you are an Officer of a local union that is not presently registered for this system and would like to begin using it, please contact the General Office to get started.

To those that are participating in our initiatives to be more efficient and environmentally friendly, I thank you, and if you have been considering signing up I encourage you to do so as soon as possible.



### 2011 SUPPLIES

**The 2011 Supplies have been mailed to those local unions that have submitted their 3rd Quarter Report for 2010 and purchased the appropriate number of per capita stamps.**

**The number of per capita stamps that must be purchased is based on the number of members reported on the 1st and 2nd Quarterly Reports plus two times the number of members reported on the 3rd Quarter Report (to allow for an estimate of the numbers that will be reported on the 4th Quarter Report). When the 4th Quarter Report is submitted in January 2011, an adjustment to balance the local's account is made if necessary.**

### 2011 PER CAPITA

**Delegates to the 66th Quadrennial Convention voted to increase the per capita tax for local unions by two dollars (\$2.00) effective 1/1/2011 and one dollar (\$1.00) effective 1/1/2012, all of which is to be allocated to the General Fund. Per capita tax for Special Department local unions will remain unchanged.**



## Great News for Plan Members

After less than 5 years in existence, the Canadian Entertainment Industry Retirement Plan passed \$100 million in assets in early October 2010, which, according to Benefits Canada magazine, puts it within the range of the 50 largest reported Defined Contribution Plans in Canada. This phenomenal growth has allowed the Plan to renegotiate the Investment Management Fees (IMFs) with Great-West Life, passing even more savings on to members enrolled in the Plan.

In late October, the Retirement Committee, which oversees the operation of the Plan, sat down with Great-West Life and successfully negotiated a significant reduction in the fees charged

to all Portfolio and Cadence (Lifestyle) funds in our Plan to 0.99%. This represents a 13.9% reduction in fees for the Cadence Funds which were previously at 1.15% and a 10.0% reduction in fees for the Portfolio funds which were at 1.10%. The full amount of these savings will flow directly to members' accounts.

In addition to this announced fee reduction, Great-West Life has also agreed to renegotiate the fees again once the Plan reaches \$200 million in assets. Incredibly, the Plan's Consultants estimate that the Plan will reach this benchmark in less than 2 years.



Fees make a huge difference over time and the lower the fees, the faster members' retirement savings will grow. From the humble beginnings of the Plan, the Retirement Committee has been committed to lowering fees charged to members without sacrificing quality of service. The ability to negotiate such low fees is largely the result of the mass buying strength of over 13,000 members working together.

### DISTRICT TEN'S NEW BOARD



**International President Matthew Loeb swore in the IATSE 10th District Executive Board at the District's Convention on October 16, 2010 in Albany, New York. From left to right President Loeb, International Vice President Anthony DePaulo, Robert Gottschalk, John Scardino, Mike Stas, Beverly Miller, John Hill, Lee Squires, Lewis Resnick (missing from photo board member Greg Hancox).**

# New Online Lobbying Campaign Launched!

## MAJOR PENSION REFORM NECESSARY FOR CANADIAN RETIREES

Canada's retirement income system is in serious trouble. There is too much risk and not enough security to ensure that, after a lifetime of work, people can retire and live out their last years in dignity. Expanding the Canada Pension Plan (CPP) is the most effective way to ensure all Canadians have adequate retirement incomes. The CPP is seen as secure, reliable, cost-effective, and well managed. It covers virtually all Canadian workers, whether employed or self-employed, full-time or part-time, it is fully portable when workers change jobs; it is indexed for inflation; and it accom-

modates the different work patterns of women. This makes it the only logical choice to work with when discussing how to better ensure all Canadians have sufficient means to retire.

The labour movement, led by the Canadian Labour Congress, has therefore designed a plan to increase the CPP and ensure that no Canadian retirees are forced to live below the poverty line. The two major components of the plan would see a doubling of the CPP benefits through incremental increases to contributions over seven years, and an increase of 15% to the Old Age Secu-

rity and the Guaranteed Income Supplement for retirees.

The IATSE launched its own online lobbying campaign for pension reform in late fall, which can be found through the International's Web site at [www.iatse-intl.org](http://www.iatse-intl.org). Our last campaign, on copyright reform, has so far yielded great results, with a strong response from government. We therefore encourage all Canadian members to go to the site and use the software to email your federal and provincial representatives. This is an issue that affects every single one of us. Make sure your voice is heard.

### WOMEN IN VIEW

**"SexMoneyMedia" was an international symposium on women in media held in Vancouver, BC from October 14 - 16, 2010. The IATSE was a Gold Sponsor of this event, the first such symposium held in Canada. Goals of the symposium were to generate a constructive cross sector dialogue addressing gender diversity and balance in Canadian media, and to promote awareness of the cultural, social, economic and political costs of gender inequity in the Canadian film and television industries.**

**The program included a workshop on career development for women in camera and publicity, presented by IATSE Local 669, and a panel on union representation of women in film and television. Many IATSE members participated and found the events informative and energizing. Practical strategies were developed to overcome**



**From left to right: Dusty Kelly, Local 891 Corresponding Secretary, Julia Neville, International Representative, Mimi Wolch, Senior Business Agent, DGC Ontario, Amanda Coles, Panel Moderator for Women in View, Lise Lareau, President, Canadian Media Guild and Kelly Moon, CLC Delegate and IA 891 Senior Steward.**

**systemic obstacles to women's full participation in the media industries, each tailored to specific facets of the industry, policy and educational sphere.**



## IATSE GOES TO WASHINGTON



At the direction of International President Loeb, the IATSE Diversity Committee (pictured above) consisting of (left to right) International Vice Presidents Dan Di Tolla, Brian Lawlor and J. Walter Cahill, International Trustee C. Faye Harper and CLC Delegate Kelly Moon – met in Washington, DC on October 28th and 29th with Rosalyn Pelles, Director of the AFL-CIO’s Civil, Human and Women’s Rights Department and Alfonso Pollard of the Communication Workers of America.

On October 20, 2010, Officers, representatives, staff and friends honored Executive Assistant to the General Secretary-Treasurer Barbara Jackson on her retirement from the IATSE. A luncheon was held at the Croton Reservoir Tavern in New York City. On behalf of the International, General Secretary-Treasurer Wood presented Ms. Jackson with a watch and thanked her for her 22 years of dedicated service and commitment to the membership of the Alliance.



General Secretary-Treasurer James Wood, General Secretary-Treasurer Emeritus Michael Proscia, Barbara Jackson and International President Matthew Loeb.

### President’s Newsletter

*Continued from Page 4*

bility to keep those new to these positions on track. We must be watchful on the state level of bill introductions, and ballot initiatives. We will be faced with challenges such as paycheck deception, “right to work”, and other serious attacks on working families and their unions. This is no time to let down our guard, but a time to re-invigorate our efforts and stay involved in the political and legislative process.

In this issue of the Bulletin you will read the feature article that summarizes the involvement of our members across the country. It is clear that the members of this great Alliance know the importance of participating in the political process. The need to have legislators who understand the needs of working families and who will work hard to protect our interests is

ultimately what will enable us to maintain our rights to organize and negotiate the best agreements possible to represent our members.

So we must now take a fresh approach and begin the fight all over again. We, in the IATSE have the energy and the capacity to work hard to ensure that our government and our generation lives up to the promise of America: that we leave more opportunity, not less, to those who come after us.

I thank you for all you did this year to make change happen and all you will do to keep up the fight. 2012 is not that far off and we have more challenges and hard work ahead of us. I know the IATSE will continue to fight harder and to ensure that the results of those elections are more promising.

# IATSE GOES GREEN



## RECEIVE THE OFFICIAL BULLETIN AND OTHER COMMUNICATIONS BY EMAIL

We all have to do our part to save the planet. Receiving your copy of the Official Bulletin and other communications from the International by Email will reduce paper usage, burn less fuel to deliver materials and decrease the number of paper notifications sent out by direct mail. Additionally, we'll be able to get important information to you more quickly.

Thank you to the following local unions that complied with the International's request to provide Email addresses for their members:

4	212	470	484	514	720	856
16	260	476	491	631	822	875
22	295	479	492	667	829	892
53	412	480	493	669	USA829	927
210	416	482	495	675	849	ATPAM

Locals listed as of December 1, 2010

**VISIT [WWW.IATSE-INTL.ORG](http://WWW.IATSE-INTL.ORG) TO SIGN UP**



## Participation is Key to Our Future

By Kent Jorgensen,  
Chairman, IATSE Craft  
Advancement Program Committee



People have a tendency to think about health and safety in terms of big incidents. Someone getting killed or losing a body part gets peoples' attention. The prevention of the hazards that cause these incidents is important, but what about the little pains? What about the everyday types of risks that to most of us seem trivial because we deal with them away from the job as well? What about the things small in our youth that accumulate into a large problem?

Safety classes and safety rules are written because someone was hurt or killed. This especially goes for the boring classes that talk about proper lifting so you don't hurt your back or wearing safety glasses to protect your eye sight. OSHA or whoever is in charge didn't just decide that this might be nice information to offer. The boring classes deal with seemingly little things "we know" or things we don't think will affect us but can cause a lifetime of problems.

For a couple of years the authorities have been pushing the wearing of orange or reflective clothing when an employee is exposed to traffic. Sure it makes sense that road workers wear them, but some cities are having their police officers wear them. Notice the next time you go

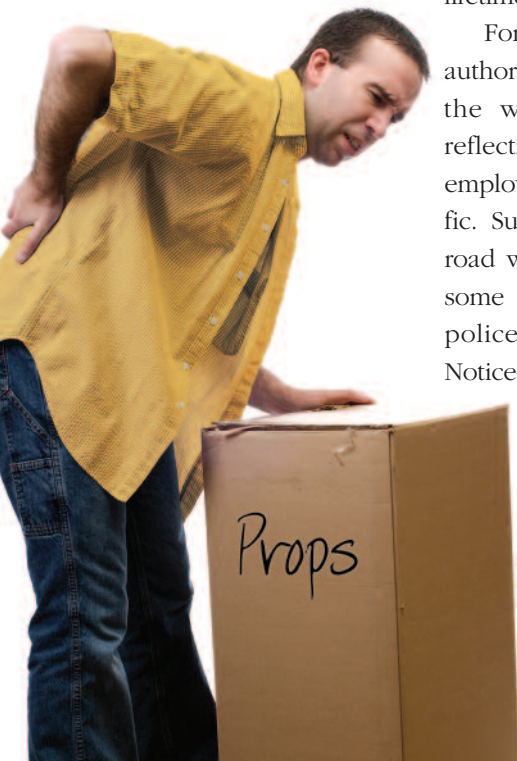
to a major chain store, are the workers rounding up the carts in the parking lot wearing vests?

The Hollywood crews are being asked to wear reflective vests when they are walking around their trucks or otherwise exposed to traffic. Many people complained. They roll their eyes. "I walk across the street every day," is grumbled. Many think it's stupid. Statistically, being hit by a vehicle is the way a large percentage of workers die in America.

Many of our jobs require lifting something - bundles of costumes, rigging equipment, lighting instruments, cases of water, and boxes of who knows what. We lift and carry and put down and do it over and over again. When we're young it's easy. We do it to make a place for ourselves on a crew. We do it to show off. We do it because someone is pushing to go faster. We do it because the faster it's done the sooner we go home. And, for these reasons we forget the things we were taught in our boring lifting class: Lift within your limits; use lifting equipment; get help; keep your back straight; use your legs. We all know the rules.

How many people do you know with back issues? There are many. But, many back injuries can be prevented by following the boring class.

It should be everyone's plan to enjoy retirement. To enjoy retirement must mean having good health. It is not right that you are unable to go out and do the things you want to do because of injuries you got over the course of your working days. Use the training provided to you. Pay attention to the way you work. Remember that how you do something is not just for now but has an affect in your future.



*The boring classes deal with seemingly little things "we know" or things we don't think will affect us but can cause a lifetime of problems.*



## LABOUR MOVEMENT SCORES VICTORY IN ONTARIO FOR SAFE WORKPLACES

On Christmas Eve last year, four migrant workers in Toronto fell to their deaths after the scaffold on which they were working collapsed. The Ontario Federation of Labour (OFL) demanded action and sought criminal prosecution for those responsible, under the Criminal Code provision known as Bill C-45. The bill allows for the criminal prosecution of corporate executives, directors and managers who act wrongfully or neglect to uphold their responsibilities to make and keep workplaces healthy and safe. There are no maximum financial penalties and guilty parties can receive sentences of up to 20 years.

Since the bill was enacted six years ago, over 400 workers have died and over 1.5 million have been injured in Ontario, yet not one C-45 prosecution had taken place. After the Christmas Eve deaths and the resulting public outrage, the OFL poured on the pressure with its "Kill a Worker, Go to Jail" campaign. The campaign garnered huge support as families, unions and community organizations demanded action.

On October 13, the three co-owners of the company responsible were arrested, and each face four charges of criminal negligence causing death. This will be the first prosecution in Ontario under Bill C-45. OFL President Sid Ryan stated, "This is the signal to employers that we have been waiting for. It says to every CEO and manager that workers' deaths are serious matters with real penalties attached and that they had better take safety seriously." Although the prosecution took place in Ontario, the Criminal Code is federal legislation, so the impact of this case will be felt across Canada.



## Save 15%\* on AT&T Wireless

Go union and **start saving 15%\*** on AT&T wireless monthly service plans, **including iPhone®** plans. In addition to saving money, you'll be using the only national unionized wireless carrier.

**Start  
Saving  
Today!**   
**at&t**

- **Visit [UnionPlus.org/ATT](http://UnionPlus.org/ATT)** to find a store. Then download the proof of membership form and discount savings coupon from the website and take both - along with union ID - to your local AT&T store (not available at authorized retailers or kiosks).
- **Online @ [UnionPlus.org/ATT](http://UnionPlus.org/ATT)** Purchase services and find specials on phones.  
**The Union Plus FAN# is 3508840.**

**Union  
Plus®**  
SAVINGS • SERVICE • SOLIDARITY

\*Credit approval and new two-year service agreement required. Other conditions and restrictions apply. EdMail



## CITT Recognizes Nova Scotia Tattoo with Technical Award of Merit

For 31 years, the Royal Nova Scotia International Tattoo has entertained thousands of people, earning it the label of the World's Largest Annual Indoor Show. The Tattoo began in 1979 as a gala to welcome Her Majesty Queen Elizabeth and the Queen Mother to the International Gathering of the Clans in Halifax. It was such a great success that it became an annual tradition, growing from that one show to 8 shows every year from July 1-8 and to a cast of over 2,000 participants combining civilian performers (singers, musicians, dancers & gymnasts) from all over the world with military bands, drill teams and of course, bagpipes.

This year, the Canadian Institute of Theatre Technology (CITT) recognized the Nova Scotia Tattoo with its Award of Technical Merit, which is presented to a production company

or theatre, or combination thereof, for outstanding achievement in the use of theatre technology on a specific project or production. This was a major achievement for IATSE Local 680, which provides technicians for the lighting, audio, stage and video set up, as well as the 14 spotlight

operators and the audio technician for the shows themselves. Colin Richardson, Local 680's Secretary-Business Agent, is also the Technical Director of the Tattoo. Congratulations are extended to Colin and to Local 680 for their hard work and professionalism.



PHOTO CREDIT: CITT/ICTS

**Local 680 member and Chair of the 2010 Conference Committee Sean Burke (left) and Local 680 Vice President Debbie Richardson (right) present the award to Colin Richardson, Technical Director of Royal Nova Scotia International Tattoo and Secretary-Business Agent of Local 680**

**On September 24, 2010, Local 8 participated in the "Get out the Jobs" rally in Philadelphia. Local 8 also donated the stage and labor for the event.**



# Illinois Local Supports Senator

Senator Dick Durbin visited the Local 476 meeting/training center this past October in support of John Mulroe who was running for 10th District of the Illinois Senate.

John Mulroe is a brother to Local 476 member Tom Mulroe who works as a film medic and is also an active worker as a Chicago Fire Department Paramedic.

Local 476 is proud to have helped John Mulroe to his victory on November 2nd. John will be one of our close ties to Springfield for the advancement of the motion picture industry in the state of Illinois.



From left to right: Local 476 Business Manager Mark Hogan, Illinois Senior US Senator Richard Durbin, newly-elected Illinois 10th District State Senator John Mulroe, Local 476 Recording Secretary Brad Matthys and Local 476 Vice President Dan Clancy.

Pictured here are officers and members of Local 22 marching in the Labor Day Parade in Kensington, Md. From left to right: Brian Benson, Amelia Benson, Lorrie Ledesma, Jeff Montague, and Bryan Badman (not pictured Leslie Hartzell and John Mielczarek).



On July 27, 2010, Retired International Vice President Mike Sullivan and Assistant to the President Sean McGuire were present and participated in the swearing in of ten new wardrobe members of Local No. 96, Worcester, Massachusetts.



## LABOR DAY IN ILLINOIS



Pictured here is Local 193's entry in the Bloomington, Illinois Labor Day Parade. Local 193 was given a position of prominence (first union entry) in the parade this year, as this is their centennial year.



Pictured here are IATSE Stagehands at the Lewis-Clark State College in Lewiston, Idaho for the 54th annual Grace Carroll Rocky Mountain Labor School, AFL-CIO. From front to back: Mosha Bialac, Nevada State AFL-CIO Representative, Local 720; Dan Schooner, Secretary, Local 99; Dan'l Cook, President, Local 720; Monica Fabbi, 7th Vice President Southern Idaho Region, Local 99; Andrew Lynch, President, Local 7 and Fernando Rivera, Member, Local 720.



Local 183 in Beaumont, Texas celebrated their 100th Anniversary this year. The Local was chartered on April 20, 1910. Included in the photo are: Back Row: L to R: John Wells, President JE Wells, Ken Kittell, John Roush, David Atmar, Jim Wells, Mark Arrington, Christian Sykes, Retired International Representative Robert Trombetta, Shelby Cook. Second Row: L to R: Danny Lisenby, Jeff Coward, Vice President Louis Loftin, Secretary-Treasurer Marie Pinner, Joyce Helton. Seated: L to R: Allan Waldrep, Leland Waldrep, Business Agent Larry Allen, WJ Harris, Jamie Strawther.

# Local 129 Pitches in for Tivoli Theatre Restoration

The Tivoli Theatre has served many functions during the course of its lifetime in downtown Hamilton, Ontario. It's been a carriage factory, a movie theatre, a playhouse, a record store, a nickelodeon and a vaudeville house. The Tivoli is tradition. The Tivoli is memories. And sadly, the Tivoli has seen better days.

The theatre sat unused and not properly maintained for years, and it appeared that nothing would change that downward trajectory. That's when Soul of the City: Toonies for Tivoli was formed. The community group is trying to raise \$5 million towards the \$15 million cost of restoring the theatre building as a dance, arts and culture centre.

The group has formed key partnerships to encourage and involve organizations in the restoration. One of those is with IATSE Local 129, in the form of an agreement in principle to work together to make the restored theatre a training ground for theatre workers and apprentices.

"We want it to be a union house," says Diamante. "We want long-term sustainability and quality, achieved through solid relationships with grassroots community institutions, not fair-weather speculators."

Local 129 is to be congratulated for forming this partnership, which not only stands to increase future labour opportunities but is simply the right thing to do for the local



arts community. The campaign has all the elements for success, involving business, labour and the community.



Local 33's groundbreaking for the new office building on the same site they were previously on in Burbank, CA. From left to right: Business Representative-TV Paul Paolasso, Business Representative-Theatre James Wright, Recording Secretary Jane Leslie, President George Blanch and Financial Secretary/Treasurer William Jones.

# IATSE, “Biggest Loser” Reach Agreement

On Monday, November 8th, 2010 the production crew of “The Biggest Loser” voted to strike their employer in order to obtain recognition and a contract. “The Biggest Loser” is a hit reality program that is produced by Reveille and 3 Ball Productions and airs on NBC.

Production crew, members, officers and representatives of the West Coast Studio Locals, as well as the representatives and staff of the IA West Coast office manned the picket lines daily for the two week duration of the strike. The Los Angeles County and California State Labor Federations both sanctioned the strike and provided support, as did other entertainment industry unions, including AFTRA, SAG, DGA, WGA and Teamsters Local 399.

On Friday, November 19th, President Loeb travelled to LA to join the striking workers on the picket lines. Also, that morning the IA and the employer met in what turned out to be a marathon negotiating session that lasted until the early morning on the 20th. A tentative four - year agreement that is based upon the Videotape Supplemental Basic Agreement (Green book) and modified to address specific production issues unique to “The Biggest Loser” was reached late on Sunday night and the following morning, the crew ratified the agreement unanimously. Approximately 70 production and post-production technicians will be covered by this agreement.

The crew of “The Biggest Loser” has demonstrated what can be accomplished when a crew of skilled technicians and artisans stand together for what they believe in, and stay together in the face of job loss, replacement workers and a recalcitrant employer. For the first time in 11 cycles, this crew will be under a union agreement that will provide health and pension benefits.

President Loeb spoke to the striking workers on the picket line



Maria Elena Durazo, Executive Secretary-Treasurer, Los Angeles County Federation of Labor showed her support at the picket line.



PHOTO CREDIT: BETH DUBBER, LOCAL 600

# Interpreting the Contract

Sometimes rank and file employees are asked to interpret the contract. Don't put yourself in an awkward position! Refer employers to your local union's Business Representative. Your Business Representative will know if the contract is held by the local union or the International. Questions relating to contracts held by the local union can be answered by the Business Representative. She or he will know the bargaining history and the intent of the contract. Interpretation of contracts held by the International should be referred to the local union Business Representative who will contact the International for interpretation. When it comes to resolving grievances, it becomes much more different when representatives have to overcome the contention that a department head or crew member "agreed" with a contractual interpretation. This becomes an even more serious obstacle if a Shop Steward is involved. Interpretation of agreements by a Steward are potentially precedent-setting, and can erode the immediate contract, and in the case of a term signatory company undermine our future bargaining position.

## RELIGIOUS PRODUCTIONS

There are increasing numbers of examples of faith-based productions entering into the low budget motion picture market. Many of these productions maintain a fidelity to their Christian principles and willingly enter into agreements that provide crews and their families with health insurance and retirement benefits- however, many do not.

The IATSE has recently engaged in organizing campaigns related to church-based productions. Sometimes the producers come to understand that the right thing to do is to treat the crew the same way as the actors (who thus far have had contracts). Other times we have had to take the unfortunate measure of organizing the jobs and even engaging in strikes.

Institutionally, we cannot pick and choose organizing targets based on the message of the motion picture. Producers are all subject to the same clear rules- at certain budget levels and with a certain critical mass of support, we will seek an agreement that assures your professional standards and provides you and your family with contributions toward your health and retirement security.

If you are a member of a religious group that is contemplating a motion picture, be sure you express the importance of a contract and the benefits to your family that flow from it. It is much easier to address these matters in the months of pre-production than out on the street during principle photography.

Know that on any non-union job- whether faith-based or not- if the budget is sufficient and crew interest exists, it is an organizing target.

## Support the IATSE-PAC

Please complete this form and return it with your contribution to the IATSE General Office. Thank you.

**YES!** I want to support the IATSE-PAC and its efforts to make the voices of IATSE members heard in Washington. I enclose my voluntary contribution to the IATSE-PAC of:

\_\_\_\_\_ \$25.00      \_\_\_\_\_ \$50.00      \_\_\_\_\_ \$100.00      \$\_\_\_\_\_ (Other)

(THE IATSE IS UNABLE TO ACCEPT MONIES FROM OUR CANADIAN MEMBERS)

Name: \_\_\_\_\_

Occupation: \_\_\_\_\_

Local No.: \_\_\_\_\_

Current Employer\*: \_\_\_\_\_

Mailing Address: \_\_\_\_\_

"If you are currently between jobs, but usually work for a variety of entertainment industry employers, you may state "Various Entertainment Employers."

All contributions to the IATSE-PAC are voluntary, and not tax-deductible.

A person's contribution to the IATSE-PAC may not exceed \$5,000.00 per year. The contribution amounts listed are suggestions only, and you may contribute more or less than the suggested amount.

Federal Law requires the IATSE-PAC to use its best efforts to collect and report the name, mailing address, occupation and the name of the employer of individuals whose contributions exceed \$200.00 in a calendar year.

The amount contributed, or the decision not to contribute, will not be the basis for the IATSE or any of its locals to benefit or disadvantage the member or his/her family. Neither the IATSE nor any of its locals will retaliate against a member for deciding not to contribute, or based upon the amount of the contribution.

# LABOR 2010

**IATSE LOCALS  
PLAY A KEY ROLE  
IN THE MOST  
IMPORTANT  
MID-TERM  
ELECTIONS FOR  
AMERICAN LABOR  
IN 16 YEARS.**

**BY DAVID GEFFNER**

Here's how Karen Ackerman, the Washington D.C.-based political director for the AFL-CIO, described the November 2nd elections just four weeks before the big day. "The stakes are enormous. Many of the Republican candidates for governor, Senate and House are extraordinarily wealthy and fiercely right wing.

We're seeing Tea Party candidates in places like Alaska, Kentucky, Nevada, and West Virginia saying they want to abolish minimum wage and unemployment compensation, and that it's the workers faults they're unemployed!"

Ackerman added, with a bit of political clairvoyance, that should the many fringe right-wing candidates make it into office, the potential for the "gutting of social protections" trade unionists have spent more than 50 years building becomes a real concern.

"This election is a fight for economic security for working people, and whether they'll be pushed further away from the middle class and fall through the cracks, or whether the country will (elect leadership) that creates good Union jobs and rebuilds our infrastructure," Ackerman emphasized. "The American Labor movement has a key role to play in mobilizing the working base. Simply put: the stakes are as big as they ever been."

Damn straight. Not since 1994 (remember Newt Gingrich's infamous "Contract with America") have working families been so under attack during a (presidential) mid-term election. And political veterans like Ackerman, who's been following such elections for decades, didn't need to resort to hyperbole to make their cases. The examples included former Lehman Brothers managing director John Kasich's successful bid for governor in Ohio,

and former corporate executives' Meg Whitman and Carly Fiorina failed challenges for governor and senator in California, all of which highlight the enormous personal wealth anti-labor candidates funneled into races this year (the \$141.5 million of personal funds spent by Whitman was the most in American history).

"We're talking about the power elite - people who represent the richest one percent in this country," Ackerman marveled, adding names like Rob Portman, the former Director of the Office and Budget and Management (OMB) for the Bush Administration, who was victorious in his Ohio senate bid against democrat Lee Fisher. "They not only want to destroy America's infrastructure by increasing unemployment in states with high union density - building trade unemployment in Nevada is at 60 percent, for example - but, if elected, they'll have the power to shape legislative bodies and redistricting for a decade to come."

### BOOTS ON THE GROUND

Fortunately the IATSE's membership had been preparing for these 2010 mid-term elections far in

advance. They were urged on by President Matthew Loeb's four-point strategy (1. appoint Local Union Coordinators and Worksite Coordinators to work with AFL-CIO field staff on the ground, 2. enhance worksite communications to prevent anti-worker politicians from defining election races, 3. join Labor 2010 walks in targeted districts, 4. mail Local Union letters to inform members about specific state and district issues and the reasons to vote with their union). IATSE efforts in battleground and "watch" states were substantial, perhaps in some examples making the difference between a fringe candidate bent on destroying working families, and his (or her) pro-labor opponent.

Starting in California, the nation's largest state by population and labor density (nearly 2.5 million Union members), where International Representative Ron Garcia says IA Locals were "deeply committed" to helping elect Jerry Brown for governor and Barbara Boxer for senate. "Both candidates have proven to be on the side of working families," Garcia noted, months before an election night that saw the Democrat, Brown, return to

the California governor's office for the third time, crushing the Republican, Whitman, by nearly 20 percentage points. Boxer beat her opponent, former Hewlett-Packard CEO Fiorina, in a closer race - 50 to 45 percent.

Hollywood-based stage and production locals played a huge role in getting Brown elected: the returning governor amassed 63 percent (one million votes) in Los Angeles County. Local 80 (Grips) opened up their Burbank facility every Tuesday evening for six straight weeks prior to the election for phone bank calling. "We had nearly 300 volunteers show up over the course of the phone banking effort, and they placed more than 12,500 phone calls to IA members," Garcia says. "On the Saturday just



PHOTO CREDIT: BETH DUBBER, LOCAL 600

before Election Day, we had almost two-dozen volunteers show up to walk the various precincts.”

Complimentary food and drinks for the ongoing phone banking events were provided by Locals 33 (Stagehands), 44 (Affiliated Property Craftspersons), 80 (Grips), 600 (International Cinematographers Guild), 700 (Motion Picture Editors Guild), 705 (Costumers), 800 (Art Directors Guild), and 892 (Costumers Guild) in a cause that was truly unified.

“Locals 33, 44, 80, 600, 700, 705, 706 [Make-Up Artists & Hair Stylists Guild], 728 [Motion Picture Studio Electrical Lighting Technicians], 729 [Motion Picture Set Painters & Sign Writers], 800, 871 [Script Supervisors, Continuity Coordinators, Accountants and Allied Production

Specialists Guild], and 892 all participated in this effort to help Brown and Boxer support working families,” Garcia adds.

Spirited efforts were also made in Northern California, where Andrea Pelous, Secretary-Treasurer, Local 784 (Theatrical Wardrobe Union), reports her members at the San Francisco Opera helped to pass out more than 400 postcards as part of the AFL-CIO’s Working America campaign – urging working women to host coffee and postcards parties across the nation to help get out the vote. (Other participating Locals in the AFL-CIO’s postcard campaign across the country were: New York Locals 161 and 764, Orlando Local 631, Los Angeles Locals 700 and 705, Chicago Local 769, Cleveland Local 883, and Indianapolis Local 893.) Pelous included the AFL-CIO literature in Local 784 newsletters, as well as candidate endorsements by local Labor Councils in five Bay Area counties (San Francisco, Oakland, San Jose, San Mateo, and North Bay). Further north, in Washington, Local 600 contributed \$2,500 in support of efforts to reelect Patty Murray. The four-term senator beat back former commercial

real estate executive Dino Rossi, who was endorsed by Washington state Tea Party activists. The national reach of Local 600 also included \$7,500 to help support Governor elect Brown’s campaign, as well as a direct \$5,000 contribution to Governor elect Cuomo in New York. All the West Coast locals contributed or exceeded their per capita membership in making donations to the California State Federation of Labor’s One Million New Voter campaign.

No race this election season was more important than the battle Senate Majority Leader Harry Reid waged to retain his seat in nearby Nevada. Las Vegas-based Local 720 (Stagehands) president, Dan’l Cook, says his members “were extremely active” in Reid’s hard-fought contest with far-right fringe candidate Sharron Angle, working in conjunction with the Nevada State Labor Federation, the Central Labor Council (CLC) and local organizations like the Paradise Democratic Club. Nevada State AFL-CIO Executive Secretary-Treasurer Danny Thompson says the Nevada labor movement was a major contributor to Reid’s effort.

“We hired IATSE members who were between jobs to go door-to-door for us doing member-to-member contact, phone banking, and job site leafleting,” Thompson recalls. “With over 200 people on the ground, this was one of the biggest multi-Union efforts of any campaign in recent memory, and IATSE was a big part of that.”

With more than 225,000 Union-affiliated workers accounting for 32-34 percent of the voting record (depending on District) in Nevada, labor has always played a huge role in Nevada’s politics. “When Harry Reid won his Senate seat (by 424 votes) in



1998 he attributed the victory to the Nevada AFL-CIO,” Thompson adds. “Had Sharron Angle been elected, (Nevada) would have become the laughing stock of the nation. She is so far off the grid, it’s ridiculous.” Thompson cites the recent City Center project (in Las Vegas), which employed more than 12,000 construction workers, and another 10,000 local hires, making it the largest privately funded job site in the world. “City Center was 100 percent union,” Thompson notes, “and when their financing was put into jeopardy, Harry Reid pressured the banks to step in, while Sharron Angle proudly said, ‘I wouldn’t have done anything to save those jobs!’”

IA efforts in Nevada were not limited to federal campaigns. Local 720 members turned out in force for incumbent Dina Titus, in a race she lost by less than two thousand votes to Republican Joe Heck in the Third Congressional District. Cook says his members also spearheaded an in-depth review process earlier in the year to flush out the best pro-labor judicial candidates. In his report to the Southern Nevada Central Labor Council, Local 720 member Craig Michie recalled his Local’s close collaboration with Sheet Metal Workers Union 88 and Operating Engineers Local 12. More than 76 percent of the judicial candidates in the field were interviewed over the course of the five-day process, with 22 panelists representing 13 CLC labor unions helping to put together the list of labor friendly endorsements.

Just to the south in New Mexico, IATSE Local 480 (Studio Mechanics) led the charge in several close races, including Congressman Ben Ray Luján’s winning campaign in the 3rd

District, and Martin Heinrich’s race victorious in the 1st Congressional District, along with Diane Denish’s failed bid to become New Mexico’s first female governor. Local 480 Business Agent Jon Hendry, who is also the New Mexico Federation of Labor’s political director, says efforts included purchasing billboards (directed at Republican candidates) with messages like “It’s not about

a “Your Vote is Your Voice” Labor Day rally that saw nearly 2,000 visitors. “We also built floats that I personally [Hendry has been a Teamster since 1984] drove the semi-rig for in parades, and we produced YouTube videos with volunteers from Locals 600 and 700,” he continues. “We made a 30-second spot for Congressman Luján in response to a Republican hit piece launched against him in early

***“With over 200 people on the ground, this was one of the biggest multi-Union efforts of any campaign in recent memory, and IATSE was a big part of that.”***

**Nevada State AFL-CIO  
Executive Secretary-Treasurer  
Danny Thompson**

jets, it’s about jobs.” “Those billboards were paid for by individual contributions from our members,” Hendry points out. “Our PAC Chair, who is also president of the Central Labor Council, worked full time with the 501(c)(5) advocacy group “We Are New Mexico” to print up thousands of banners, and more than 10,000 copies over the last three months. On one weekend we had dozens of volunteers hand painting more than 1,000 signs, which volunteers then hung on every post between Santa Fe and Espanola welcoming President Clinton [who was stumping for Democratic candidates in the state].”

Hendry says Local 480, working in conjunction with the Central Labor Council, raised more than \$9,000 for

October, and our members made constant set visits to get members registered and informed, always making sure to wear our Labor 2010 shirts!”

Although the challenges in a “blood-red” state like Utah were many, International Representative Brian W. Faulkner said IA efforts were still aggressive. “In early October, Local 838 (Exhibition Employees) members joined with other Unions to canvas a petition for Locomotive Engineers member Jay Seegmiller,” Faulkner reports. “And one week later I participated in an outreach, with 65 other Union members, on behalf of State Senator, Karen Mayne, an American Federation of Teachers (AFT) member and a staunch advocate for working families.”

Faulkner said IATSE efforts in Utah went hand-in-hand with other Get out the Vote (GOTV) members like the Utah State Labor Federation, the Utah Working Families Campaign, the State Democratic Party and Utah Common Values (an organization dedicated to promoting Democratic values to young Latter Day Saints members). “We did bus tours around the state,” he recounts, “including one with 56 field organizers [and several Local 838 members] that traveled to St. George, the second fastest growing municipality in the nation. It was the largest interaction with Democra-

tic and working family households in Utah’s history.” GOTV’s targeted goal of 65 percent participation of Union households, and an overall participation of 51 percent of Democratic households in Utah was key to blue victories in the predominantly red state, including incumbent Jim Matheson holding onto his seat in the 2nd Congressional District, and democrat Sim Gill-Lohra Miller winning the Salt Lake County district attorney’s office.

“The road to success was quite steep,” Faulkner reflects. “But through our association with other AFL-CIO

affiliates - Operating Engineers, Steel Workers, AFSME, CWA, Iron Workers, AFT, Fire Fighters, OPEIU, Painters, and IBEW - the outlook for success grew with each passing week.”

### **SOUTHERN VOICES**

Elaine Marshall’s unsuccessful attempt to unseat Senator Richard Burr in North Carolina, who voted thumbs down in extending unemployment benefits and raising the minimum wage, was, in many ways, a referendum on where progressive government is headed in America. Marshall, a North Carolina Public Employees Union member, became the first woman ever elected to statewide executive office, when she won the 1996 Secretary of State election by a whopping eight percent. Re-elected three times since, Marshall received the second highest vote total of any candidate in the state (in 2008), mirroring the democratic victories of Governor Bev Perdue, U.S. Senator Kay Hagan, and President Barack Obama in the same election cycle.

Jason Rosin, Business Agent for Local 491 (Studio Mechanics) in Wilmington, and President of the Southeastern North Carolina AFL-CIO Central Labor Council, says the roughly 1,000 IATSE members across North Carolina tried to build on the success of 2008 in these mid-term elections. Local 491 President Harrison Palmer sent out hundreds of letters urging IA members to vote for Marshall, as well as Senate comparison pieces in the Local 491 newsletter, in the weeks leading up to November 2nd. More pro-Marshall literature was sent directly to Charlotte-area stagehands in Local 322, as well as IA Locals 278 (Mixed), 417 (Mixed), 574 (Mixed), and 635 (Mixed). One month before

***“AFL-CIO endorsement literature was distributed to all IATSE members in the state, letting them know which candidates were union friendly.”***

**Local 27 Business Manager Dave Vacca**



**International Representative Peter Marley and International Vice President Thom Davis**



Election Day, Local 491 members split the cost (with Teamster 391) for a bus to journey up to Washington D.C. for Labor's One Nation Working Together march on October 2nd. Roughly 100 members of the South Eastern North Carolina Labor Council (CLC) made the trip to the U.S. capitol, where tens of thousands of working families came together to support pro-labor candidates in advance of Election Day.

Rosin, who has been working with North Carolina's State Federation of Labor for the past five years, says that the organization "does more with less" than any group he's ever seen. He points out that North Carolina has the lowest union density of any state in the country, and the cooperation amongst the different labor groups, IATSE included, has proved hugely successful in changing the political atmosphere toward working people in the state.

"We put together an amazing field program in 2008 that put Congressman Larry Kissell (8th District) into office in an area that was a Republican stronghold," Rosin adds, "and

once, again, in 2010, this became a targeted race that IATSE members from Charlotte to the eastern portion of his district were working his field plan." Given such efforts, democratic voters returned Kissell to office on election night, despite conservative groups like Americans for Job Security and Center for Individual Freedom spending more than \$1 million to defeat him. Republicans had control of the house when I first ran [in 2006]," Kissell said after his victory. "It's never been about Washington. It's always been about the district."

One of the keys to IATSE efforts in North Carolina, where early voting began October 16th, was to insure that all IA members who wanted to vote but were not yet registered had all the necessary information during the early voting period. "Our members in Wilmington volunteered to put together mailings for the CLC and other local unions," Rosin says. "They got involved in the AFL-CIO endorsement process, whether it was for a school or county board race, or a state house or state senate election. IA members sat down with candi-



**Maria Elena Durazo, Executive Secretary-Treasurer, Los Angeles, County Federation of Labor**

dates to talk about issues that impact us directly, so we had a meaningful voice in the endorsement process."

Despite a strong and mobilized effort by IATSE locals in the Sunshine state, anti-labor candidates managed to prevail in three key races. Central Florida was a battleground region, as ultra-conservative former state senator Daniel Webster defeated 8th District incumbent Alan Grayson, a provocative liberal who won in his seat in 2008 despite Florida voting Republican in the national election. In a closely watched gubernatorial race, wealthy Republican businessman (and former health care executive) Rick Scott beat back a heavy challenge from the state's Chief Financial Officer Adelaide "Alex" Sink, a pro-environment, pro-labor candidate who was the first Democrat

elected to Florida's state cabinet since 1998; first-term congresswoman Suzanne Kosmas, who bravely backed Obama's Health Care Reform in Orlando's right-leaning 24th district, waged an equally tough campaign in her loss to former deputy sheriff Sandy Adams.

Josh Anijar was the AFL-CIO's Zone Coordinator in Central Florida. He says Locals 835 (Exhibition Employees) and 631 (Stagehands) took "numerous steps to make sure their members were educated, mobilized and ready to make their voice heard" on voting day. That included taking part in statewide labor marches, manning phone banks, and passing out leaflets at their jobsites. "Activists

like [Local 835 member] Fred Bevis tirelessly committed themselves to volunteering whenever humanly possible," Anijar says. [A letter of commendation from IATSE President Matthew Loeb was sent out to Bevis in recognition for his efforts.] "As the corporate assault continued in this election cycle, our grassroots efforts offered an alternative discourse that challenges their money and Astroturf mobilizing with rank and file activism and education on how important this election was for the working people of Florida," Anijar adds.

Although Louisiana was not considered a battleground state (legislative elections are held in odd-number years), 3rd District Congressman Char-

lie Melancon's attempt to best Republican David Vitter for a U.S. Senate seat was a focus for IATSE members. Melancon, elected to the House in 2004 and re-elected twice since, was the only Democrat from Louisiana's seven-member House delegation. Russell Wingfield, president of Local 298 (Stagehands) and a delegate to the Central Trades & Labor Council, was the IA union coordinator in Shreveport and he approached the IATSE PAC for a \$5,000 contribution to Melancon's campaign, which ultimately fell short of victory. Other efforts included "red beans and rice" luncheons for Union members in conjunction with IBEW 194, and mailing out the pro-labor slate of candidates (as endorsed by the Cen-

***"Working America canvassers knocked on more than 850,000 doors, operating out of offices in 13 cities in nine states.***

Karen Nussbaum, Executive Director, Working America



tral Trades and Labor Council of Shreveport and Vicinity AFL-CIO Committee on Political Education – COPE – to all 298 members.

“We also worked closely with Phil Locicero (President of Local 478 – Studio Mecahnics) and his members in North Louisiana,” Wingfield recounts. “There are more than 150 (Local 478) members in Shreveport working in films, and many are new to the area.” Wingfield says his local set its sights on the Shreveport mayoral race to help get Cedric Glover re-elected in the hopes of that he will support Local 298 members working in the new Shreveport Convention Center. Louisiana voters put Glover back in the mayor’s office for another four years, winning by a whopping margin of 64 to 34 percent.

### **WHERE THE RUBBER MEETS THE ROAD**

No race received more national attention than Ohio Governor Ted Strickland’s razor close loss (less than 100,000 votes) to former congressman John Kasich in this heavily unionized swing state. Local 27 (Stagehands) in Cleveland led IATSE’s efforts. Working alongside the LABOR 2010 Committee and the North Shore Federation of Labor (AFL-CIO), the stagehands worked tirelessly to drive home the importance of the mid-term election. Business Manager Dave Vacca says Local 27 members volunteered their time for precinct walks and phone banks, prepared and passed out literature, and staffed polls on election days.

“The election committee mailed out letters encouraging members and their families to get out the vote,” Vacca explains. “AFL-CIO endorsement literature was distributed to all IATSE members in the state, letting



them know which candidates were union friendly.” The key role Union membership in Cleveland played was made clear by the number of pre-election visits from Democratic heavyweights. “President Obama and Vice President Biden held a rally for Union members at Cleveland State University,” Vacca adds, “just days before the election.” And Union mobilization paid off in three key Ohio congressional districts, the 10th, 11th, and 13th, where pro-labor candidates Dennis Kucinich, Marcia Fudge, and Betty Sutton, all came out on top. Ohio working families nearly managed to push the incumbent governor back into the lead, voting 72 percent for Strickland versus 28 percent for his anti-labor opponent, Kasich.

Pennsylvania is home to two-dozen IA locals and, like Ohio, its heavy union density is broken up along demographic lines. As International Representative Joseph Harnett points out, “Philadelphia and Pittsburgh have always been (pro-labor) strongholds and the rest of the state tends to go conservative. [This past election] was all about voter turnout in the major cities and suburbs for

the statewide races, while the congressional races were mostly a toss-up.” Harnett says the Allegheny County Labor Council (based in Pittsburgh) was very active with Keystone State union members, coordinating phone-banking events at the United Steel Workers’ headquarters in downtown Pittsburgh. Sponsored events to view candidate debates were also part of the effort, along with COPE sending out information on the endorsed candidates.

“Dan Onorato (D) versus Tom Corbett (R) was a key race for Pennsylvania IA members,” Harnett continues. “The state typically votes for the party that is out of power when it comes to the governor’s office, so Onorato [who lost by two percentage points] had an uphill battle all the way.” Harnett says the race for Arlen Specter’s open Senate seat also was a focus. “Joe Sestak [democratic congressman from the 7th District] won the primary in a big upset and closed the race from a 9-point deficit to a dead heat in the week before voting,” Harnett relates. “Pat Toomey is a former Republican congressman from the 15th district who carries a 97 per-



cent lifetime rating from the American Conservative Union, so his victory was not a good thing for working families in Pennsylvania. The International made a contribution to Sestak's campaign at a PAC fundraiser at the General Executive Board Meeting way back in early August."

In Philadelphia, Local 8 (Stagehands) joined with members of AFSCME, AFT, APWU, CWA, IAM, IBB, IBEW, IBT, Ironworkers, IUPAT, LIUNA, NALC, OPEIU, Roofers, SEIU, SMWIA, UA, UFCW, and USW to support labor-endorsed candidates. Hundreds of Union brothers and sisters turned out for a rally in the city's famed Love Park, where IUPAT General President James Williams, Southeastern PA Area Labor Federation Chair John Meyerson, and Pennsylvania AFL-CIO Secretary-Treasurer Frank Snyder urged working families to get out the vote for labor-endorsed candidates like Joe Sestak, Dan Onorato, Patrick Murphy and Bryan Lentz, even though such efforts were not enough to overcome unrest over the economy in all of the afore-mentioned races.

Just up the interstate, 10th District Secretary-Treasurer John Hill, reports a very busy election cycle for the roughly 10,000 IATSE members based in New York and New Jersey. "We endorsed 55 candidates for

office in the two states," Hill recounts, "with all of them being carefully vetted to make sure they were friends of organized labor. The vetting process, which started in late spring and included working with the New York and New Jersey AFL-CIO's, continued throughout the summer. Nearly five dozen IATSE locals were advised on which candidates deserved our Union's support."

Hill adds that the 10th District also made donations totaling \$27,850 to labor-friendly candidates in the months leading up to elections. Many of the donations were hand carried to the candidates with messages of support from the IATSE. "From Buffalo to Atlantic City, our members contributed many hours of time and talent working on political campaigns," Hill continues. "From neighborhood walks to leafleting and phone banks, their voices were heard. We had face-to-face meetings with Andrew Cuomo, Eric T. Schneiderman and Thomas P. DiNapoli." State comptroller DiNapoli was appointed to the office to complete the term when the previous comptroller was removed from office, while Governor Elect Cuomo, and Attorney General Elect Schneiderman won their races by hefty margins. Cuomo's victory was highly publi-

cized after voters deemed his opponent, Carl Paladino, wildly off the grid. The 64-year old real estate developer and Tea Party fringe candidate blatantly dismissed voters in union-dense New York City, while promising to "take a baseball bat" to the state government in Albany.

## BACK TO WORK

So what are the lessons to be gleaned from Decision 2010? According to Karen Nussbaum, Executive Director, Working America (the community affiliate for the AFL-CIO), it was not what the mainstream media, or even ballot returns, would have us all believe.

"Voters may have been angry about the economy," Nussbaum notes. "But they were not in favor of Republican solutions." In fact, the 3 million strong membership of Working America (72 percent who self-identify as "moderate or conservative") voted 71 percent to 29 percent in the House races, and 70 percent to 30 percent in the Senate elections, in favor of pro-labor endorsed candidates.

"Between September 1 and November 2nd," Nussbaum details, "Working America canvassers knocked on more than 850,000 doors, operating out of offices in 13 cities in nine states. We worked on high-profile wins like the Nevada and Colorado Senate races and the Minnesota and Oregon gubernatorial races, but our work continues all the way down the ballot to state legislatures and ballot initiatives."

The challenges faced by Union members mobilizing the pro-labor vote were, in many respects, unprecedented, even by 1994 standards. Heavyweight Beltway lobbying groups, like the U.S. Chamber of Com-

merce, spent more than \$32 million to attack Democratic candidates in the weeks leading up to the election. American Crossroads and its nonprofit sister group, Crossroads GPS (founded with support from GOP strategists Karl Rove and Ed Gillespie), spent \$40 million in a similar effort. [By comparison, the top independent Democratic group, the American Federation of State, County and Municipal Employees, spent about \$12 million.]

In fact, the rise of non-profit political donors, who are not required to support their funding sources and are overwhelmingly aligned with far-right interest groups, played a huge role in pro-labor defeats this past election cycle. According to a Washington Post analysis, such “shadowy” groups spent twice as much on congressional races this year as they did in 2008, and

more than five times as much as they did in 2006. Jim Jordan, a political strategist who founded Commonsense Ten, a super PAC that spent \$3 million in support of Democrats, says the bar will be raised even higher for working families in 2012.

“Obviously, we find this kind of politics distasteful,” Jordan related in a recent Washington Post article. “But we’ll have to ask ourselves whether our causes and constituencies are best served by disarming or by getting in the game in a more robust way.”

Either way, the effort put forth by IATSE members in support of working family candidates was unprecedented, and will, hopefully, only be surpassed in 2012. IA members placed tens of thousands of phone calls to get out the vote, and donated thousands of more hours walking

precincts, attending rallies and marches, and vetting pro-labor candidates in advance of election day. As President Matthew Loeb reflects: “At the end of the day I am proud of the work we all did in these Mid-Term elections. There were numerous successes on the state and local levels, and this Union was instrumental in helping to return many pro-labor congressmen and women to office. But clearly the overall results only increased the challenges for working families and the labor community as we move forward. The most important thing to take back from all this hard work is how important it is for this membership to stay connected to the issues and leaders that impact working families, so that the 2012 elections yield results that are far more promising.”

## **POLITICALLY INCORRECT**

**The Tea Party, the resurging Republican agenda, vows to repeal healthcare reform, legislative attacks on trade unions.... As Yogi Berra put it, “it’s déjà vu all over again”.**

**Frustration with the economic meltdown has caused voters to lash out against the current administration and the heads of Democratic lawmakers were chopped off in record numbers on November 2nd. The Republicans did a great job of playing, “pin the tail on the donkey” blaming the Democrats for the financial mess that was orchestrated and delivered by the Republican party under George W. Bush.**

**The Republican base seems a mile wide, but an inch deep. Seeming to forget who is responsible for turning a blind eye to who caused massive spending overages, irresponsible tax cuts to the wealthy and allowed the financial sector to rob the American public.**

**Political involvement by all IATSE members and their**

**families is going to be critical to stop the radical Tea Party agenda that seems to be the rudder steering the Republican ship. Talk to your local Democratic party, State Labor Council and if you can afford to give of your time or money, do it. If you can’t, be sure to vote and talk with others about important issues like healthcare, tax cuts for millionaires and urge them to vote too.**

**2012 will be an epic battleground. The Supreme Court has lifted corporate spending limits on political campaigns and ever since the taxpayers bailed them out, many of these corporations are hoarding piles of cash (rather than hiring) and licking their chops at the prospect of deposing Democrats and those with pro-labor agendas through all manner of Swift boat-like attacks.**

**Get involved NOW!! Because if you didn’t like the Bush years, you really don’t want to see what a President Palin would be like.**



# Long Island Local Honors Long-time Member

On June 21, 2010, Long Island Local 340 honored Brother Jack Cassidy with his 50 year Gold Card, presented by General Secretary-Treasurer James Wood.

The presentation was a memorable occasion for Brother Cassidy, who was surrounded by family and friends including his three sons, all IA members, who flew in from around the country to attend. Also in attendance were International Vice Presidents Anthony DePaulo and John Ford, Local One President James Claffey, Jr. and Local 52 Vice President John Fundus.



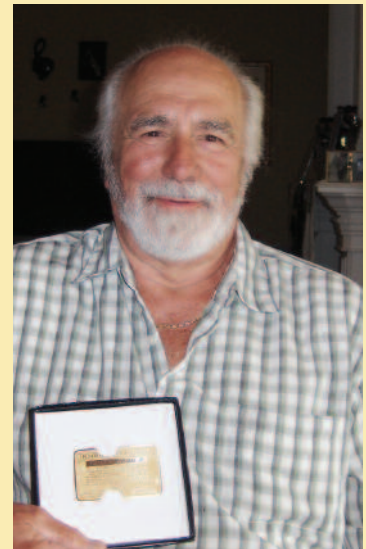
From left to right: International Vice President John Ford, Local 340 Business Agent Brian Frankel, International Vice President Anthony DePaulo, International General Secretary-Treasurer James Wood, Brother Jack Cassidy, Local 340 President Robert Sullivan, Local 340 Vice President Charles Trantum and Local 340 Treasurer Robert Gottschalk, Jr.

## 50-YEAR MILESTONE FOR LOCAL 212 MEMBER



Local 212 Member Barry Merrells and International Vice President Damian Petti

At a celebration held in his honour, Local 212 Member Barry Merrells received a 50-year scroll and gold pin from International Vice President Damian Petti, who is also the President of Local 212. Early in his career, Barry worked as a grip, electrician and property master on numerous motion picture projects. He later served as one of the Local's most prolific stage shop stewards. Barry also held the positions of Stage and Production Business Agent. Barry expressed his gratitude to the Local and the International for the honour. Held on a family ranch near Irricana, Alberta, the celebration included a BBQ, dancing, campfire and fireworks.



New Orleans Local 39 honored Brother Walter A. Weysham, Jr. with his Gold Card. Walter joined Stage Local 39 in 1967. Over his long career, he worked in every department of the IA-Stage, Movies, and Tradeshows. Congratulations Walter and all the best in your retirement.



International President Matthew Loeb and International Vice President Anthony DePaulo presented Brother Richard Rider with a plaque for 14 years of dedicated service to the IATSE 10th District Executive Board. Brother Rider retired from the Board at the District Convention on October 16, 2010.



Brother Lenny Perry of Local 720 received the Opportunity Villages Good Guy Award on May 22, 2010. Opportunity Village serves people with intellectual disabilities. From left to right: Local 720 Business Agent John Hanson, Local 720 President Dan'l Cook, Brother Lenny Perry, Local 720 Member Tony Gennarelli and International Representative Peter Marley.

## SUPPORT FOR UNITE HERE!

UNITE HERE is facing major challenges with Hyatt Hotels. Hyatt has taken the lead in its attempts to weaken union standards across the United States and Canada. Hyatt has also refused to permit non-union workers to have a fair process to unionize. On August 31, 2009, Hyatt fired their entire non-union housekeeping staff in 3 Boston area hotels and replaced them with minimum wage subcontracted workers.

Earlier this year, workers in 15 cities staged demon-

strations outside Hyatt hotels from Boston to Honolulu, from Miami to Vancouver. In September 2010, workers walked out on strike at five Hyatt hotels demanding that Hyatt negotiate fair contracts.

Hyatt's actions have made it clear that they are committed to making difficult, dangerous and low paying hotel jobs worse.

The IATSE supports our brothers and sisters of UNITE HERE and asks that you join in their boycott against Hyatt Hotels.

### DO NOT PATRONIZE:

Hyatt Regency Boston (Boston, MA)

Hyatt Harborside at Logan Airport  
(Boston, MA)

Hyatt Regency Cambridge  
(Cambridge, MA)

Hyatt Regency Chicago (Chicago, IL)

Hyatt Regency Indianapolis  
(Indianapolis, IN)

Hyatt Regency Century Plaza  
(Los Angeles, CA)

Hyatt Regency Long Beach  
(Long Beach, CA)

Hyatt Regency O'Hare (Rosemont, IL)

Manchester Grand Hyatt San Diego  
(San Diego, CA)

Hyatt Regency San Francisco  
(San Francisco, CA)

Grand Hyatt San Francisco  
(San Francisco, CA)

Hyatt Fisherman's Wharf  
(San Francisco, CA)

Andaz West Hollywood  
(West Hollywood, CA)

Hyatt Regency Vancouver  
(Vancouver, BC)



## A Lifetime To Some, A Career To Others



As quickly as the world is changing, the IATSE has made remarkable changes to the way we administer and address the issuance of traveling contracts under the leadership of International President Loeb. Whether it be the introduction of the Passport system or the morphing of one-off touring agreements into term agreements, the changes made in the last several years have been very well accepted by the traveling members. The introduction of the new traveling members' computer system will allow the department to monitor changing street conditions more easily and allow us and the IA's website to know in real time who is touring with each attraction any given day versus the myriad of challenges that the old system had.

Towards that end, a veteran Pink Contract employee recently asked a question about when Annuity contributions started in the traditional full Pink Contract, which drove us to the archives to gather the answer. Although we were only able to give an approximate answer, which was sufficient to the member, the

Department was able to review contracts that were negotiated a mere 30 years ago. Thus the header "A Lifetime to Some, A Career to Others" - consider if you will that:

- In 1980 the minimums were \$350 for heads, \$300 for assistants. Effective January 1st, 2011 those minimums are \$1025 for heads, \$925 for assistants.
- Per Diem was \$150 a week, effective January 1st, 2011 it will be \$840 a week.
- Holidays were defined as Christmas and Holy Week, now we have eleven holidays where various premiums are paid or guaranteed.
- The 1980 contract was a seven day a week agreement, 24 hours a day. Now it is a six day agreement with restricted work hours with premiums beyond.
- The Pension Contribution was \$24 a week or \$4.80 a day. Today that contribution is \$80 per week, \$16 a day.
- The Health and Welfare contribution was \$22.75 a week, or \$3.25 a day. Effective January 1st, 2011 that contribution will be \$295.50 a week, or \$49.25 a day.

- The Vacation contribution was 7% of the minimum salary, today it is 5% of the actual salary (7% for wardrobe personnel.)
- There was no Annuity Contribution in 1980. As of January 1st, 2011 the contribution will be 11.5% of the actual salary.

There are so many working condition changes that time will not allow them all to be shared. But rest assured that they are significant, and recognize the achievements in the several decades to the Pink Contract system by Retired International Vice President Michael J. Sullivan and those who came before him. In addition at the direction of, and with dedication and determination, our current International President engaged additional staff to service the traveling community at large. Changes have been made to our computer systems, we have negotiated and introduced term agreements and the passport system, and we feel that the best is yet to come.

# Final Curtain for Phantom of the Opera

The final performance of the long-running North American tour of The Phantom of the Opera was on October 31st, Halloween night, at the Pantages Theatre in Los Angeles.

The musical has been represented on the road since the first national tour began performances in Los Angeles in May 1989. Since that time, there have been three U.S. national touring productions. The first national tour (Christine Company) played Los Angeles and San Francisco for a combined total run of almost ten years, grossing \$305,192,485 with 3,902 performances and 6.6 million patrons. The second national tour (Raoul Company) played major markets during an eight-and-a-half-year run, grossing \$393,608,819 with 3,364 performances and 7.5 million patrons. The third national tour (Music Box Company) is the only production still currently touring the

U.S. and will have played 7,284 performances at the time of its closing, spanning almost 18 years on the road (there have been some breaks during that time).

The three U.S. national tours have grossed over \$1.5 billion in combined box office sales. When the Music Box Company concluded its run on Oct. 31, the three touring

companies played 216 engagements in 77 cities for an unprecedented combined total of over 14,500 performances. Three IA members were with the show from beginning to end. Congratulations to Randy Moreland, Head Carpenter, Local 421, Mike Gosensik, Advanced Rigger, Local 251 and Francis Fehr, Head Wardrobe, Local 799.



Here is the last photo taken of the crew of Phantom. From left to right: (Back row) Don Adcock, Keith Harris, Marvin Crosland, Henry Talarowski, Mo Ellis, Randall Moreland, Sean Collins, Jacel Evans, Jim Hegwood (Front) Steve Ruelle, Dan Frasco, Tara Gaige, Marc Mannonni, Brian Weinkauf.

## RESUMES FOR THE ROAD

The Stagecraft Department has seen a recent surge in requests for ACT cards for traveling members on tiered tours for the Networks, Troika's, Big League's, Phoenix's, and WorkLight's of the world, as well as for Broadway League Modified and SET tours. We are rapidly approaching 500 members in the department and although many of these individuals are represented by specialty skills, a good number are entry level or assistant positions on these traveling attractions. These numbers do not include our members who travel with Disney On Ice or VEE Corporation.

Several Official Bulletins ago, the Department offered to gather resumes to provide to these Employers with the assumption that within our current member base there are those who want to travel on the road and hone their skills.

We would once again solicit resumes for individuals interested in traveling and urge those interested members to forward their resumes to the General Office in care of the Stagecraft Department or via the Stagecraft Email address at [Stagecraft@iatse-intl.org](mailto:Stagecraft@iatse-intl.org). Alternatively the department would urge those members interested in touring opportunities to visit the websites of the aforementioned employers. This solicitation will not result in employment opportunities until we build a substantial amount of resumes and the Employer get comfortable seeing the General office as a reliable resource for individuals interested in traveling.



# Modified Term Touring Agreement Set To Expire

Our groundbreaking and maiden term agreements with Networks, Troika, Big League, Phoenix, and WorkLight are set to expire at the end of June, 2011. The Stagecraft Department would like to begin getting recommendations for changes to these agreements from individuals currently traveling under them. Please forward your recommendations, either individually or by tour, to the IATSE General Office or to the Stagecraft Department Email address at Stagecraft@iatse-intl.org.

The Department assumes that under the direction of International President Loeb, a committee of bargaining unit employees will be appointed and assigned to assist the Co-Directors and other staff in negotiating a successor agreement with these Employers. It is also our intent to morph these agreements into the Passport system and to continue to reduce the amount of Pink Contracts being issued as opposed to negotiating collective bargaining agreements that accompany the passports.

We will put another reminder in the 1st Quarter Issue of the Official Bulletin to remind our members traveling under these contracts but urge you to start thinking about negotiating the contract.

## EDUCATION SEMINAR IN LAS VEGAS

In conjunction with the regular Mid-Winter meeting of the General Executive Board, there will be an Education Seminar on Wednesday, January 26, 2011 from 2:00 p.m. to 4:00 pm. in the Champagne 4 Ballroom at the Paris Las Vegas Hotel. James Heinzman, Partner with the firm of Schultheis & Panettieri will present a seminar on "Best Practices in Union Administration". Topics to be covered include record keeping, document retention, a discussion of IRS and DOL required filings and issues, as well as practical ways to avoid future catastrophes. This seminar is open to all representatives from Local Unions, who are encouraged to attend.



## IATSE PAC FUND

As was most recently demonstrated by the recent 2010 elections, money has become the most significant determinant in getting our message heard among politicians at all levels. You may have read that over three billion dollars was spent in the last election cycle. As much as we may find this process unpalatable, the IATSE must continue to raise funds to compete with the entities that want to take us backwards on many important issues, including recent advancements in Labor Law from the Obama administration.

As the Stagecraft Department hopes you are aware, every Pink Contract that the IATSE holds with every Employer allows for the remittances of monies to be contributed to the IATSE Political Action Committee Fund. The Department includes the check-off forms with the ACT kits we send to new members. In addition the IATSE Web site has an area dedicated to the IATSE PAC Fund and has downloadable donation forms and an online contribution system. We also have hard copy check-off forms that can be sent out to each tour upon the request of the show's steward.

Please consider helping us by participating in the PAC. It is never too soon to start participating as the 2012 election cycle is already starting to gear up even as we read this article.

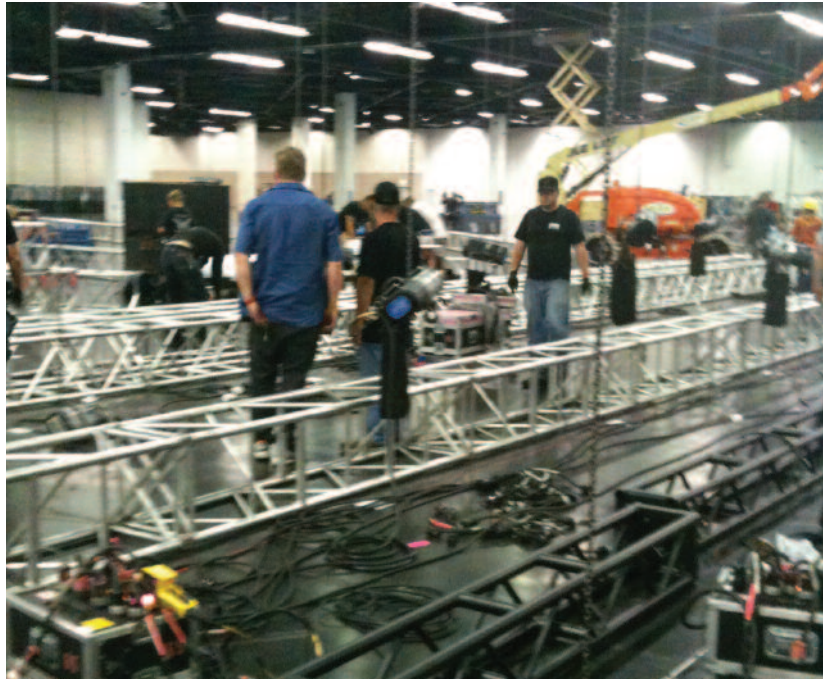


## Blizzcon 2010

Anaheim Local 504 enjoyed a week of work doing the installation, show, and dismantling of the Blizzcon 2010 tradeshow at the Orange County Convention Center. The Blizzcon Show is a popular computer gaming show that attracts over 26,000 attendees. Tickets for the show sold out in four and one-half seconds.

Local 504 received a major assist in staffing the calls from Los Angeles Local 33, San Bernardino Local 614 and Palm Springs Local 707. Labor calls averaged 160 workers per day and peaked at 227. IATSE members hung 405 rigging points to suspend 7,000 feet of lighting truss and large amounts of audio visual equipment.

The show was broadcast pay-per-view in the U.S. and by webcast in several foreign countries.



UNITED STATES POSTAL SERVICE® (All Periodicals Publications Except Requester Publications)		
1. Publication Title <b>OFFICIAL BULLETIN</b>	2. Publication Number 0 4 0 3 - 4 0 0	3. Filing Date 9/24/10
4. Issue Frequency <b>QUARTERLY</b>	5. Number of Issues Published Annually 4	6. Annual Subscription Price 10.00 NON-MEMBER
7. Complete Mailing Address of Known Office of Publication (Not printer) (Street, city, county, state, and ZIP+4®) 1430 BROADWAY, 20TH FLOOR, NEW YORK, NY 10018		Contact Person <b>MARYANN KELLY</b> Telephone (include area code) 212-730-1770
8. Complete Mailing Address of Headquarters or General Business Office of Publisher (Not printer) 1430 BROADWAY, 8TH FLOOR, NEW YORK, NY 10018		
9. Full Names and Complete Mailing Addresses of Publisher, Editor, and Managing Editor (Do not leave blank)		
Publisher (Name and complete mailing address) <b>MATTHEW D. LOEB</b> 1430 BROADWAY, 20TH FLOOR, NEW YORK, NY 10018		
Editor (Name and complete mailing address) <b>JAMES B. WOOD</b> 1430 BROADWAY, 20th FLOOR, NEW YORK, NY 10018		
Managing Editor (Name and complete mailing address) <b>MARYANN KELLY</b> 1430 BROADWAY, 20th FLOOR, NEW YORK, NY 10018		
10. Owner (Do not leave blank. If the publication is owned by a corporation, give the name and address of the corporation immediately followed by the names and addresses of all stockholders owning or holding 1 percent or more of the total amount of stock. If not owned by a corporation, give the names and addresses of the individual owners. If owned by a partnership or other unincorporated firm, give its name and address as well as that of each individual owner. If the publication is published by a nonprofit organization, give its name and address.)		
Full Name	Complete Mailing Address	
<b>INTERNATIONAL ALLIANCE OF THEATRICAL</b>	1430 BROADWAY, 20th FLOOR	
<b>STAGE EMPLOYEES, MOVING PICTURE TECHNICIANS</b>	NEW YORK, NY 10018	
<b>ARTISTS AND ALLIED CRAFTS OF THE UNITED</b>		
<b>STATES AND CANADA</b>		
11. Known Bondholders, Mortgagees, and Other Security Holders Owning or Holding 1 Percent or More of Total Amount of Bonds, Mortgages, or Other Securities. If none, check box <input checked="" type="checkbox"/> None		
Full Name	Complete Mailing Address	
12. Tax Status (For completion by nonprofit organizations authorized to mail at nonprofit rates) (Check one) The purpose, function, and nonprofit status of this organization and the exempt status for federal income tax purposes: <input type="checkbox"/> Has Not Changed During Preceding 12 Months <input type="checkbox"/> Has Changed During Preceding 12 Months (Publisher must submit explanation of change with this statement)		

13. Publication Title <b>Official Bulletin</b>		14. Issue Date for Circulation Data Below 2nd Quarter 2010	
15. Extent and Nature of Circulation		Average No. Copies Each Issue During Preceding 12 Months	No. Copies of Single Issue Published Nearest to Filing Date
a. Total Number of Copies (Net press run)		99,285	99,105
b. Paid Circulation (By Mail and Outside the Mail)	(1) Mailed Outside-County Paid Subscriptions Stated on PS Form 3541 (include paid distribution above nominal rate, advertiser's proof copies, and exchange copies)	83,924	83,592
	(2) Mailed In-County Paid Subscriptions Stated on PS Form 3541 (include paid distribution above nominal rate, advertiser's proof copies, and exchange copies)		
	(3) Paid Distribution Outside the Mails Including Sales Through Dealers and Carriers, Street Vendors, Counter Sales, and Other Paid Distribution Outside USPS®	14,274	14,337
	(4) Paid Distribution by Other Classes of Mail Through the USPS (e.g. First-Class Mail®)		
c. Total Paid Distribution (Sum of 15b (1), (2), (3), and (4))		98,198	97,929
d. Free or Nominal Rate Distribution (By Mail and Outside the Mail)	(1) Free or Nominal Rate Outside-County Copies included on PS Form 3541		
	(2) Free or Nominal Rate In-County Copies Included on PS Form 3541		
	(3) Free or Nominal Rate Copies Mailed at Other Classes Through the USPS (e.g. First-Class Mail)		
	(4) Free or Nominal Rate Distribution Outside the Mail (Carriers or other means)	1,087	1,086
e. Total Free or Nominal Rate Distribution (Sum of 15d (1), (2), (3) and (4))		1,087	1,086
f. Total Distribution (Sum of 15c and 15e)		99,285	99,015
g. Copies not Distributed (See instructions to Publishers #4 (page #3))			
h. Total (Sum of 15f and g)		99,285	99,015
i. Percent Paid (15c divided by 15f times 100)		98.91%	98.90%
16. Publication of Statement of Ownership <input checked="" type="checkbox"/> If the publication is a general publication, publication of this statement is required. Will be printed in the <u>4th</u> issue of this publication. <input type="checkbox"/> Publication not required.			
17. Signature and Title of Editor, Publisher, Business Manager, or Owner 			Date 9/23/10
I certify that all information furnished on this form is true and complete. I understand that anyone who furnishes false or misleading information on this form or who omits material or information requested on the form may be subject to criminal sanctions (including fines and imprisonment) and/or civil sanctions (including civil penalties).			

# IN MEMORIAM



NAME	LOCAL	NAME	LOCAL	NAME	LOCAL	NAME	LOCAL
<b>William J. Bratton</b> July 1, 2010	1	<b>Oscar A. Smith</b> August 2, 2010	33	<b>Harry W. Lewis</b> September 13, 2010	110	<b>Vincent R. Gutierrez</b> April 6, 2010	700
<b>Michael W. Gibbs</b> August 10, 2010	1	<b>Calvin Pickett</b> July 2, 2010	33	<b>Colin Campbell</b> June 30, 2010	118	<b>Gerald Kleppel</b> April 1, 2010	700
<b>Edward R. Leddy</b> August 5, 2010	1	<b>Frank A. Otello</b> August 9, 2010	33	<b>Daniel P. Flanagan</b> September 23, 2009	181	<b>Leonard Kroll</b> September 17, 2005	700
<b>Joseph T. Loglisci</b> August 9, 2010	1	<b>Arnold F. Meusborn</b> August 11, 2010	33	<b>Jane K. Paunicka-Zusman</b> September 14, 2010	187	<b>William Laubender</b> November 3, 2003	700
<b>Joseph M. Lynch</b> September 27, 2010	1	<b>John W. Aldays</b> June 14, 2010	44	<b>Paul H. Jackson, III</b> July 4, 2010	209	<b>Joseph A. Mayer</b> July 16, 2007	700
<b>Richard Mercado</b> July 1, 2010	1	<b>Lavernia N. Curry</b> July 18, 2010	44	<b>Martin Shostak</b> August 15, 2010	210	<b>William H. Wistrom</b> April 10, 2010	700
<b>Michael F. Milne</b> September 16, 2010	1	<b>Santo D'Arienzo</b> September 26, 2010	44	<b>Greg A. Leatherman</b> September 6, 2010	217	<b>Michael P. Dennison</b> September 1, 2010	705
<b>George D. Patterson, Jr.</b> January 25, 2010	1	<b>Patrick C. Johnston</b> July 12, 2010	44	<b>Karl F. Wikstrom</b> June 1, 2010	219	<b>Sherry Caudle</b> May 8, 2010	706
<b>Seth M. Sternberg</b> September 6, 2010	1	<b>Charles F. Mattson</b> August 10, 2010	44	<b>Brian D. Archer</b> July 9, 2010	274	<b>Lynn Masters</b> June 5, 2010	706
<b>William Suraci, Jr.</b> July 28, 2010	1	<b>Robin D. Peyton</b> July 1, 2010	44	<b>Michael D. Price</b> September 25, 2010	274	<b>Ray W. Hartzell</b> July 24, 2010	720
<b>Leonard S. Will</b> July 8, 2010	1	<b>Jack B. Torpin</b> April 6, 2010	44	<b>Greg McKinnon</b> April 5, 2010	300	<b>Robert Donn</b> July 20, 2010	728
<b>Robert D. Yaeger</b> September 14, 2010	1	<b>Bradford H. Turner</b> August 31, 2010	44	<b>Israel Moon</b> September 1, 2010	322	<b>Joe P. Milinovic</b> September 8, 2010	728
<b>Martin B. Walsh</b> April 6, 2010	2	<b>Floyd Valero</b> June 30, 2010	44	<b>Stetson Poleahla</b> September 16, 2010	336	<b>Robert Matthews</b> August 6, 2010	729
<b>Edward C. Brown</b> September 20, 2010	3	<b>James W. Callahan</b> October 27, 2010	52	<b>Kenneth Leslie-Smith</b> October 5, 2010	411	<b>Jess Lee Powell</b> September 6, 2010	731
<b>Gabriel Negri</b> August 31, 2010	3	<b>Francesco Finocchio</b> September 18, 2010	52	<b>John Crisman</b> July 24, 2010	476	<b>Laura Desario</b> July 4, 2010	751
<b>Robert J. Helms</b> September 9, 2010	4	<b>Kenneth G. Fitzpatrick</b> July 18, 2010	52	<b>Noah D. Smith</b> August 23, 2010	478	<b>Helen Martynick</b> July 7, 2010	751
<b>Peter Gill</b> May 25, 2010	10	<b>Deane Helms</b> November 7, 2010	52	<b>Bradford H. Turner</b> September 7, 2010	488	<b>Joyce Burevitch</b> September 16, 2010	764
<b>Dennis Souder</b> July 4, 2010	12	<b>Michael Jordan</b> November 27, 2010	52	<b>Lester McGraw</b> September 3, 2010	500	<b>Charlotte Clarke</b> April 7, 2010	764
<b>Craig Kinkel</b> August 10, 2010	13	<b>Lee Hartman, Jr.</b> July 28, 2010	55	<b>Joseph Logar</b> June 19, 2010	514	<b>Yvonne David</b> April 10, 2010	764
<b>Kenneth R. Sjogren</b> July 1, 2010	16	<b>Rolland Dicaire</b> September 21, 2010	56	<b>Charles E. Hamlett</b> August 1, 2010	614	<b>Harry Edwards</b> January 12, 2010	764
<b>Mary K. Doherty</b> July 23, 2010	24	<b>William J. Hamilton</b> September 18, 2010	58	<b>Michael W. Gibbs</b> August 10, 2010	631	<b>May Ishimoto</b> November 20, 2009	764
<b>Richard J. Saxe</b> July 1, 2010	25	<b>Richard Pikula</b> July 10, 2010	58	<b>Kenneth Leslie-Smith</b> October 5, 2010	667	<b>George Newman</b> February 23, 2010	764
<b>Donald Jonke</b> August 3, 2010	27	<b>Vic Fontaine</b> September 15, 2010	63	<b>Robert L. Forshier</b> January 19, 2010	695	<b>Clarence Sims</b> April 16, 2010	764
<b>Ronald Carnegie</b> August 8, 2010	28	<b>Neil MacDonald</b> July 20, 2010	63	<b>Dana B. Wood</b> July 1, 2010	695	<b>James Ivey</b> September 13, 2010	772
<b>Irving G. Ewen</b> March 8, 2010	28	<b>Robert E. Taylor, Jr.</b> September 1, 2010	69	<b>Daniel Blake</b> May 18, 2002	700	<b>Betty J. Cash</b> June 30, 2010	774
<b>Steven H. Smith</b> September 5, 2010	28	<b>Jonathan Whitlock</b> July 4, 2010	76	<b>James Clark</b> July 20, 2000	700	<b>George Walsh</b> September 30, 2010	774
		<b>Terry R. Gilberry</b> August 22, 2010	97	<b>Gordon A. Daniel</b> August 21, 2009	700		

NAME	LOCAL	NAME	LOCAL	NAME	LOCAL	NAME	LOCAL
Donald J. Domas August 24, 2010	780	Brian Beck August 2, 2010	873	Nancy Eagles September 11, 2010	891	Michael M. Sweeley June 30, 2010	18032
Enrico A. Cortese September 1, 2010	798	Jack D. Breeze May 23, 2010	873	Barbara Gasior October 25, 2010	891	Guerino "Jerry" Maiorani August 20, 2010	B90
Lawrence L. Lannin December 1, 2008	819	Ron Bunt June 9, 2010	873	Frederik Jones October 7, 2010	891	John King September 19, 2010	B751
Denis Adelsberger January 1, 2010	834	Des Dollery April 6, 2010	873	Stuart Robinson July 14, 2010	891	Sante Fiore May 17, 2010	USA829
Alston A. Emanuel September 10, 2010	834	James Kennedy May 29, 2010	873	Michael Smith September 25, 2010	891	William H. Morse, II July 18, 2010	USA829
Priscilano Romanillos July 17, 2010	839	Michael Lotosky September 24, 2010	873	Kevin M. Stadnyk September 8, 2010	891	Robert Motley September 28, 2010	USA829
Steve Fleury July 17, 2010	849	Allan Meuse April 11, 2010	873	Michael P. Dennison September 2, 2010	892	Patricia Watkins September 5, 2010	USA829
Esther Vivante July 1, 2010	871	Frank Norris May 3, 2010	873	Thomas Watson July 20, 2010	927		

## WILLIAM JOHN HAMILTON

Bill Hamilton passed away on Saturday, September 18, 2010, after a valiant battle with cancer. Bill is survived by Marie, his devoted wife of 52 years, four wonderful daughters, Joan, Laurie, Kelly and Leeann, and eight beautiful grandchildren. Bill started his working life at the Toronto Star newspaper. It was during a strike at the Star that, in order to support his young family, Bill started picking up extra work with Local 58. Bill proved to be a natural on the flyfloor. He was offered an apprenticeship in 1973 and was sworn in as a member in 1976. In 1979, Bill was elected to the Office of Local 58 Business Agent, a position he held continuously for 29 years. Upon his retirement, Bill was named Local 58 Business Agent Emeritus in recognition of his outstanding contribution and dedication to Local 58 and its members. This same dedication to the IA was recognized by the International in 2005 when, at the Quadrennial Convention held in Honolulu, Bill was presented with the



International President's Award; this was one of Bill's proudest moments.

Bill loved baseball and hockey - both watching and playing, and was a diehard Toronto Maple Leafs fan. He also attended every home season opener of the Toronto Blue Jays, from their inaugural season at the old Exhibition Stadium in 1977 right up to this past season. Bill's true love though, was Local 58 and the union. After retiring as Business Agent, Bill continued to serve as a valued member of the Executive Board, he continued to assist with contract negotiations and he was elected as a convention delegate. He attended his last District 11 Convention just this past summer in Winnipeg. Bill Hamilton was a great mentor to many of the present Officers of Local 58 and his advice and counsel was regularly sought. Local 58 and this Alliance were built on the backs of members like Bill Hamilton. We will always cherish his memory and he will be deeply missed.



## REMEMBERING KEN LESLIE-SMITH

The IATSE was sorry to learn of the passing of Brother Ken Leslie-Smith on October 5, 2010.

Ken joined I.A.T.S.E. Local 644C in 1963 as an Assistant Cameraman working on the Canadian TV Series The Forest Rangers .... the first Canadian TV Series shot in colour. Ken often talked of the good old days on that series, when most shooting days were only 8 hours long! He continued to work as a Camera Assistant in the commercial industry for the next 25 years.

In October of 1981, Ken was instrumental in securing the Local 667 charter for all of Canada. He ran the local out of his house for the first few years, using his kitchen table as his desk. Under Ken's leadership, Local 667 grew steadily and secured the camera jurisdiction in Ontario and Atlantic Canada, working with the industry to ensure strong wages and conditions for all members.

As the film and television industry grew in Canada, Local 669 was formed in 1990 to represent camera in western Canada, while Local 667 continued to represent camera in eastern Canada. Throughout the early 90's, Ken signed contracts with Canadian producers such as Power Pictures, Shaftesbury Films and Alliance Corporation, capturing virtually all of the non-union work in Ontario. In 1994, Ken was instrumental in orchestrating the merger of The Camera Guild into Local 667, resulting in more than 50



new members and securing many of the productions that the Camera Guild traditionally worked on. This manoeuvre meant that the IATSE, through Locals 667 and 669, now represented the only camera locals in the country.

In January 1998, Ken moved on to act as Business Agent for the newly chartered Local 411 Production Coordinators, continuing his work of organizing and ensuring members were well represented. Throughout his career, Ken was a staunch defender and loyal believer in the I.A.T.S.E. He worked tirelessly for the members he represented and never turned his back on a good fight to improve the working conditions for the workers. Ken was a mentor to many and will be remembered fondly by all who knew and worked with him. Fold your head, Kenny.

## THANK YOU

The Trustees of the Richard F. Walsh/Alfred W. DiTolla/ Harold P. Spivak Foundation would like to take this opportunity to thank all the friends, colleagues, members and officers that have made donations in memory of their dearly departed.

For those who would like to make a donation, please send your check to the IATSE General Office to the attention of the Richard F. Walsh/Alfred W. DiTolla/ Harold P. Spivak Foundation.

### CONTRIBUTOR

Bernard Fishbein

### IN MEMORY OF

Bill Hamilton



## Local Secretaries and Business Agents

(Unless otherwise specified, street address or post office box number listed is in city shown in bold-face type after local number.)

Reference Letters:

**ADG** Art Directors Guild

**AG&AOE&GA** Animation Guild and Affiliated Optical Electronic and Graphic Arts

**AMPE** Airline Motion Picture Employees

**APC** Affiliated Property Craftspersons

**ATPAM** Association of Theatrical Press Agents and Managers

**C** Camerapersons

**CDG** Costume Designers Guild

**CHE** Casino Hotel Employees

**E,S&CST** Electronic, Sound & Computer Service Technicians

**EE** Exhibition Employees

**EE/BPBD** Exhibition Employees/Bill Posters, Billers and Distributors

**FAE** First Aid Employees

**ICG** International Cinematographers Guild

**LF/VT** Laboratory Film/Video Technicians

**M** Mixed

**MAHS** Make-Up Artists & Hair Stylists

**MAHSG** Make-Up Artists & Hair Stylists Guild

**MPC** Motion Picture Costumers

**MPEG** Motion Picture Editors Guild (inclusive of Editors and Story Analysts)

**MPP,AVE&CT** Motion Picture Projectionists, Audio Visual Engineers and Computer Technicians

**MPP,O&VT** Motion Picture Projectionists, Operators and Video Technicians

**MPP,O,VT&AC** Motion Picture Projectionists, Operators, Video Technicians & Allied Crafts

**MPP,O,VT&CT** Motion Picture Projectionists, Operators, Video Technicians & Computer Technicians

**MPP,VT&CT** Motion Picture Projectionists, Video and Computer Technicians

**MPSELT** Motion Picture Studio Electrical Lighting Technicians

**MPSG/CS** Motion Picture Studio Grips/Crafts Service

**MPSP&SW** Motion Picture Set Painters & Sign Writers

**MPSPT** Motion Picture Studio Production Technicians

**MPST** Motion Picture Studio Teachers and Welfare Workers

**MPVT/LT/AC&GE** Motion Picture Videotape Technicians/Laboratory Technicians/Allied Crafts and Government Employees

**O** Operators

**PC,CP&HO** Production Coordinators, Craftservice Providers and Honeywagon Operators

**PST,TE,VAT&SP** Production Sound Technicians, Television Engineers, Video Assist Technicians and Studio Projectionists

**S** Stage Employees

**SA&P** Scenic Artists and Propmakers

**S&FMT** Sound & Figure Maintenance Technicians

**SM** Studio Mechanics

**SM&BT** Studio Mechanics & Broadcast Technicians

**SS,CC,A&APSG** Script Supervisors, Continuity Coordinators, Accountants and Allied Production Specialists Guild

**SS,PC,CC&PA** Script Supervisors, Production Coordinators, Continuity Coordinators and Production Accountants

**TBR&SE** Television Broadcasting Remote & Studio Employees

**TBSE** Television Broadcasting Studio Employees

**T&T** Treasurers & Ticket Sellers

**TW,MA&HS** Theatrical Wardrobe, Make-Up Artists & Hair Stylists

**TWU** Theatrical Wardrobe Union

**USA** United Scenic Artists

### ALABAMA

**S 078 BIRMINGHAM**-Sam Barnett, P.O. Box 10251, Birmingham, 35202. (205-251-1312) (Fax: 205-322-8447) Bus. Agt.: Terry Wilkins.

**S 142 MOBILE**-Helen Megginson, P.O. Box 2492, Mobile, 36652. (251-675-1451) (Fax: 251-675-9090) Bus. Agt.: Philip Tapia.

**M 900 HUNTSVILLE**-David Hendricks, P.O. Box 12, Huntsville, 35805. (256-551-2243) (Fax: 256-551-2329) Bus. Agt.: Leah Moss.

### ALASKA

**S 918 ANCHORAGE**-Ann Reddig, P.O. Box 100421, Anchorage, 99510. (907-278-3146) (Fax: 907-278-3145) Bus. Agt.: Richard Benavides.

### ARIZONA

**S 336 PHOENIX/PRESCOTT**-Pamela Boyd, 1425 E. Washington St., Suite B, Phoenix, 85034-1181. (602-253-4145) (Fax: 602-253-2103) Bus. Agt.: Bill Hennessy.

**M 415 TUCSON**-Joanne Knoebel, P.O. Box 990, Tucson, 85702. (520-882-9126) (Fax: 520-882-9127) Bus. Agt.: Reg E. Williams.

**SM 485 STATE OF ARIZONA**-Rose Lujan, 2714 West Magee Road, Tucson, 85742. (520-743-8407) (Fax: 520-423-3372) Bus. Agts.: (North) William J. Randall; (South) Roy Zarow.

**TBSE 748 STATE OF ARIZONA**-David Warner, P.O. Box 1191, Phoenix, 85001. Bus. Agt.: Eric Falkner.

**TWU 875 PHOENIX**-Kay Harmon, 11328 E. Renfield Avenue, Mesa, 85212. (480-380-3933) (Fax: 480-380-3933). Bus. Agt.: Sandy Allen (480-298-2216) (Fax: 480-380-3933).

### ARKANSAS

**M 204 LITTLE ROCK**-Nikki M. Kelly, P.O. Box 848, Mabelvale, 72103 (501-227-7301) (Fax: 501-227-7404) Bus. Agt.: Russell G. Hardy.

### CALIFORNIA

**S 016 SAN FRANCISCO/MARIN COUNTY/SANTA ROSA/LAKE MENDOCINO/PALO ALTO/SONOMA COUNTY/ NAPA COUNTY/ SAN MATEO COUNTY**-Francis X. Crowley, 240 Second Street, 1st Floor, San Francisco, 94105. (415-441-6400) (Fax: 415-243-0179) Bus. Agt.: Francis X. Crowley.

**S 033 LOS ANGELES/LONG BEACH/PASADENA/SANTA MONICA**-Jane E. Leslie, 2919 Thornton Avenue, Burbank, 91504. (818-841-9233) (Fax: 818-567-1138) Bus. Agts.: (TV) Paul Paolasso; (Legit) James M. Wright.

**APC 044 HOLLYWOOD**-Anthony Pawluc, 12021 Riverside Drive, North Hollywood, 91607. (818-769-2500) (Fax: 818-769-3111) Bus. Agt.: Edmond Brown.

**S 050 SACRAMENTO/CHICO/STOCKTON/MARYSVILLE**-Betsy Martin, 410 N. 10th Street, Sacramento, 95811. (916-444-7654) (Fax: 916-444-2263) Bus. Agt.: John Kelly.

**MPSG/CS 080 HOLLYWOOD**-Rick Schunke, 2520 W. Olive Avenue, Suite 200, Burbank, 91505-4529. (818-526-0700) (Fax: 818-526-0719) Bus. Agt.: Thom Davis.

**S 107 ALAMEDA COUNTY/OAKLAND/BERKELEY/CONTRA COSTA COUNTY/SOLANO COUNTY/RICHMOND**-Marc Campisi, 8130 Baldwin Street, #134, Oakland, 94621. (510-351-1858) (Fax: 510-844-9696) Bus. Agt.: Mark Thompson.

**TBSE 119 SAN FRANCISCO BAY AREA**-Daniel Nicholson, P.O. Box 911, San Carlos, 94070. (510-206-7987) Bus. Agt.: Daniel Nicholson.

**S 122 SAN DIEGO**-Kate Barry, 3737 Camino del Rio South, Suite 307, San Diego, 92108. (619-640-0042) (Fax: 619-640-0045) Bus. Agt.: Carlos Cota.

**M 134 SAN JOSE/SANTA CLARA**-Elizabeth Overstreet, P.O. Box 28585-Parkmoor, San Jose, 95159-8585. (408-294-1134) (Fax: 408-294-1250) Bus. Agt.: Bill Fairweather.

**O 150 LOS ANGELES/SAN BERNARDINO/RIVERSIDE/POMONA/REDLANDS/LONG BEACH**-Ricardo Costa, P.O. Box 92548, Pasadena, 91109-2548 (626-398-3456) (Fax: 626-398-3456) Bus. Agt.: Leonard Del Real.

**S 158 FRESNO/MODESTO/STOCKTON**-Scott Ellis, P.O. Box 5274, Fresno, 93755. (559-224-3151) Bus. Agt.: Eddie Williams (559-432-3277).

**O 166 SAN FRANCISCO/SAN MATEO/PALO ALTO/MARIN COUNTY**-Mark Woodall, 4909 Railroad Flat Road, Mountain Ranch, 95246. (209-754-9966) (Fax: 209-754-9977). Bus. Agt.: Donald E. Johanson.

**O 169 ALAMEDA/SOLANO/NAPA AND CONTRA COSTA COUNTIES**-Stephen Shelley, P.O. Box 29284, Oakland, 94604-9284. (415-515-3387) Bus. Agt.: Jason Mottley.

**M 215 BAKERSFIELD/VISALIA**-Jodi Robinson, P.O. Box 555, Bakersfield, 93302. (661-862-0215) Bus. Agt.: Matt Bernon.

**O 297 SAN DIEGO COUNTY**-Gary Livengood, 4579 Lisann Street, San Diego, 92117. (858-270-1196) Bus. Agt.: Dale Hyder.

**M 363 LAKE TAHOE and RENO, NV.** (See Nevada)

**M 442 SANTA BARBARA TRI-COUNTIES(SANTA BARBARA/VENTURA/SAN LUIS OBISPO COUNTIES)**-Paul Kaessinger, P.O. Box 413, Santa Barbara, 93102. (805-878-0013) (Fax: 805-937-3342) Bus. Agt.: Pat Barsocchini.

**SM 495 SAN DIEGO**-Jack Shepherd, 1717 Morena Blvd., San Diego, 92110-3635. (619-275-0125)(Fax: 619-275-2578). Bus. Agt.: Jack Shepherd.

**M 504 ORANGE COUNTY/PARTS OF CORONA**-Jerry Omasta, 671 S. Manchester Avenue, Anaheim, 92802-1434. (714-774-5004) (Fax: 714-774-7683) Bus. Agt.: Leslie Blanchard.

**ICG 600 INTERNATIONAL CINEMATOGRAPHERS GUILD**-(See also Florida, Illinois and New York) Alan Gittlin; National Executive Director, Bruce Doering; Western Region Director, David Behm, 7755 Sunset Blvd., Hollywood, 90046.



(323-876-0160) (Fax: 323-876-6383) Eastern Region Director, Chaim Kantor (New York: 212/647-7300); Central Region Director, John Hilsman (Chicago/Orlando: 312-243-3841 / 305-538-9226).

**M 611 WATSONVILLE/SANTA CRUZ/ SALINAS/ GILROY/ HOLLISTER/ MONTEREY/ PACIFIC GROVE/SEASIDE**-Steve Retsky, P.O. Box 7571, Santa Cruz, 95061. (831-458-0338) Bus. Agt.: Poco Marshall.

**S 614 SAN BERNARDINO/ RIVERSIDE/ BARSTOW/ POMONA/ REDLANDS/ ONTARIO/ BISHOP**-Windy J. Maxon, P.O. Box 883, San Bernardino, 92402. (909-888-1828) (Fax: 909-864-1172) Bus. Agt.: Robert Szoke.

**PST,TE,VAT&SP 695 HOLLYWOOD**-Elizabeth Alvarez, 5439 Cahuenga Boulevard, North Hollywood, 91601. (818-985-9204) (Fax: 818-760-4681) Bus. Agt.: Jim Osburn.

**MPEG 700 MOTION PICTURE EDITORS GUILD (see also New York)**-Diane Adler; Exec. Dir.: Ron Kutak; Asst. Exec. Dir.: Catherine Repola. 7715 Sunset Blvd., #200, Los Angeles, 90046, (323-876-4770) (Fax: 323-876-0861); Asst. Exec. Dir. (New York): Paul Moore (212-302-0700) (Fax: 212-302-1091).

**MPC 705 HOLLYWOOD**-Paul DeLucca, 4731 Laurel Canyon Blvd, #201, Valley Village, 91607-3911. (818-487-5655) (Fax: 818-487-5663) Bus. Agt.: Buffy Snyder.

**MAHSG 706 HOLLYWOOD**-John Jackson, 828 N. Hollywood Way, Burbank, 91505. (818-295-3933) (Fax: 818-295-3930) Bus. Agt.: Tommy Cole.

**M 707 PALM SPRINGS/PALM DESERT/HEMET/ BANNING/ELSINORE/29 PALMS**-Shay Funk, P.O. Box 2240, Palm Desert, 92261 (760-340-6323) (Fax: 760-340-6323) Bus. Agt.: Shay Funk.

**MPSELT 728 HOLLYWOOD**-Patric Abaravich, 1001 W. Magnolia Blvd., Burbank, 91506. (818-954-0728) (Fax: 818-954-0732) Bus. Agt.: Patric Abaravich

**MPSP&S-W 729 HOLLYWOOD**-George Palazzo, 1811 W. Burbank Blvd., Burbank, 91506. (818-842-7729) (Fax: 818-846-3729) Bus. Agt.: George Palazzo.

**FAE 767 LOS ANGELES**-Margaret Budd-Loa, P.O. Box 43000, Florence, OR 97439. (818-842-7670) (Fax: 818-474-1570). Bus. Agt.: Rana Jo Platz-Petersen (310-532-1345) (Fax: 310-352-4485).

**TWU 768 LOS ANGELES/LONG BEACH/ PASADENA/SANTA MONICA/CERRITOS**-Mary B. Seward, 1023 N. Hollywood Way, #203, Burbank 91505. (818-843-8768) (Fax: 818-843-8787) Bus. Agt.: Ann Kelleher.

**TWU 784 SAN FRANCISCO/OAKLAND/ BERKELEY/SAN MATEO/CUPERTINO/SAN JOSE/ CONCORD**-Andrea Pelous, 1182 Market Street, Suite 213, San Francisco, 94102. (415-861-8379) (Fax: 415-861-8384). Bus. Agt.: David Besser.

**TBSE 795 SAN DIEGO**-Mark Gleason, 3755 Avocado Blvd., PMB 437, La Mesa, 91941. (619-335-0795) (Fax: 858-715-0640). Bus. Agt.: Darin Haggard.

**ADG 800 LOS ANGELES (See also Illinois, New York and North Carolina)**-Lisa Frazza, 11969 Ventura Boulevard, 2nd Floor, Studio City, 91604. (818-762-9995) (Fax: 818-762-9997) Executive Director: Scott Roth; Assoc. Executive Director: John Moffitt.

**USA829 CALIFORNIA REGIONAL OFFICE (See Also New York)** - 5225 Wilshire Blvd., #506, Los Angeles, 90036. (323-965-0957) Bus. Agt.: Charles Berliner.

**AG&AOE&GA 839 HOLLYWOOD**-Jeffrey N. Massie, 1105 N. Hollywood Way, Burbank, 91505. (818-845-7500) (Fax: 818-843-0300) Bus. Agt.: Steven Hulett.

**T&T 857 LOS ANGELES/ORANGE COUNTIES**-Ann Simmons, 13245 Riverside Dr., #300C, Sherman Oaks, 91423. (818-990-7107) (Fax: 818-990-8287) Bus. Agt.: Sergio A. Medina.

**SS,CC,A&APSG 871 HOLLYWOOD**-Margery Kimbrough, 11519 Chandler Blvd., N. Hollywood, 91601. (818-509-7871) (Fax: 818-506-1555) Bus. Agt.: Missy Humphrey.

**TWU 874 SACRAMENTO AND VICINITY**-Mary Kay Morris, P.O. Box 188787, Sacramento, 95818-8787 (916-832-3396) Bus. Agt.: Sheryl Emmons (916-373-0652) (Fax: 916-374-9609).

**MPST 884 HOLLYWOOD**-Cheryl Diamond, P.O. Box 461467, Los Angeles, 90046. (818-907-8703) (Fax: 818-907-8703) Bus. Agt.: Polly Businger.

**CDG 892 HOLLYWOOD**-Ann Somers Major, 11969 Ventura Blvd., 1st Floor, Studio City, 91604. (818-752-2400) (Fax: 818-752-2402) Executive Director: Cheryl Downey; Asst. Executive Director: Rachael Stanley.

**TWU 905 SAN DIEGO**-Linda Laird, P.O. Box 124741, San Diego, 92112-4741. Bus. Agt.: Robin Lemon (619-980-6709).

**AMPE 916 LOS ANGELES**-Conrad Villafior, 17410 Fontlee Lane, Fontana, 92335-5925. (909-823-1695). Bus. Agt.: Myrel Hodge.

**S&MF 923 ANAHEIM**-Lyle Worsley, P.O. Box 9031, Anaheim, 92812-9031. (714-342-1255) Bus. Agt.: Michael Rao.

## CANADA

**S 056 MONTREAL, QC**-Carl Bluteau, 1, rue de Castlenau Est, Local 104, Montreal, QC, H2R 1P1. (514-844-7233) (Fax: 514-844-5846) Bus. Agt.: Jason Vergnano.

**S 058 TORONTO, ON**-Christopher Wilson, 511 Adelaide Street West, Toronto, ON, M5V 1T4. (416-364-5565) (Fax: 416-364-5987) Bus. Agt.: Andre Ouimet.

**M 063 WINNIPEG, MB**-Stuart Aikman, 2nd Floor - 175 McDermott Avenue, Winnipeg, MB, R3B 0S1. (204-944-0511) (Fax: 204-944-0528) Bus. Agt.: John Gallagher.

**M 105 LONDON/ST. THOMAS/SARNIA, ON**-Al Fowler, P.O. Box 182, Station Ctr. CSC, London, ON, N6A 4V6. (519-661-8639) (Fax: 519-433-5742) Bus. Agt.: Terry Barker.

**S 118 VANCOUVER, BC**-Mike Phelan, Suite #202 - 601 Cambie Street, Vancouver, BC, V6B 2P1. (604-685-9553) (Fax: 604-685-9554) Bus. Agt.: Alex McGibbon.

**S 129 HAMILTON/BRANTFORD, ON**-Cindy Jennings, P.O. Box 57089, Jackson Station, Hamilton, ON, L8P 4W9. (905-577-9193) (Fax: 905-525-6657) Bus. Agt.: Gary Nolan.

**S 168 VANCOUVER ISLAND, BC**-Brendan Keith, P.O. Box 5312, Station B, Victoria, BC, V8R 6S4. (250-381-3168) (Fax: 866-618-3848). Bus. Agt.: Cameron Stewart.

**S 210 EDMONTON, AB**-Tara Gale, 10428-123 Street, Edmonton, AB, T5N 1N7. (780-423-1863) (Fax: 780-426-0307) Bus. Agt.: Malcolm Kerr.

**S 212 CALGARY, AB**-Vince Bevans, 201-208 57th Avenue S.W., Calgary, AB, T2H 2K8. (403-250-2199) (Fax: 403-250-9769) Bus. Agts.: (Prod.) Tom MacRae; (Stage) Ellen Leavitt.

**O 262 MONTREAL, QC**-Sylvain Bisailon, 3414 Avenue du Parc, Montreal, QC, H4C 1G7. (514-937-6855) (Fax: 514-844-5846) Bus. Agts.: (Proj.): Gilles DesJardins; (FOH) Stephane Ross.

**M 295 REGINA/MOOSE JAW, SK**-Lisa Falk, 1831 College Avenue, 3rd Floor, Regina, SK, S4P 4V5. (306-545-6733) (Fax: 306-545-8440) Bus. Agts.: (Film) Latif Cavanaugh; (Stage) Ken Grad.

**M 300 SASKATOON, SK**-Jennifer Rathie-Wright, P.O. Box 1361, Saskatoon, SK, S7K 3N9. (306-343-8900) Bus. Agt.: Jennifer Rathie-Wright.

**M 357 KITCHENER/STRATFORD/CAMBRIDGE/ GUELPH/WATERLOO, ON**-Mike Walsh, P.O. Box 908, Stratford, ON, N5A 6W3. (519-746-7474) (Fax: 519-746-3030). Bus. Agt.: Larry Miller.

**PC, CP&HO 411 PROVINCE OF ONTARIO**-Robert Shea, 1315 Lawrence Avenue East, Unit 103, Toronto, ON, M3A 3R3 (416-645-8025) (Fax: 416-645-8026) Bus. Agt.: Robert Shea.

**M 461 ST. CATHARINES/WELLAND/NIAGARA FALLS, ON**-Archie Mackenzie, P.O. Box 1594, Niagara On Lake, ON, L0S 1J0. (905-932-4461) Bus. Agt.: George Galanis.

**S 467 THUNDER BAY, ON**-James Austin, 541 Hyde Park Avenue, Thunder Bay, ON, P7E 1Y1. (807-622-7407). Bus. Agt.: Terry Smith, 243 Ford St., Thunder Bay, P7C 4L5. (807-627-1460).

**M 471 OTTAWA/KINGSTON/BELLEVEILLE, ON**-James Reynolds, P.O. Box 1373, Station B, Ottawa, ON, K1P 5R4. (613-852-7321) (Fax: 613-233-6454) Bus. Agt.: Mark Hollingworth.

**MPSP 514 PROVINCE OF QUEBEC**-Ian Lavoie, 705 rue Bourget, Bureau 201, Montreal, QC H7K 3H8. (514-937-7668) (Fax: 514-937-3592). Bus. Agt.: Michel Charron.

**M 523 QUEBEC, QC**-Robert Masson, 2700, Jean Perrin, #490, Quebec, QC, G2C 1S9. (418-847-6335) (Fax: 418-847-6335) Bus. Agts.: (Stage) Guy Journeault; (Proj.) Mario Giguère; (Wardrobe) Sylvia Bernard.

**M 580 WINDSOR/CHATHAM, ON**-Alan Smith, 538-2679 Howard Avenue, Windsor, ON, N8X 3X2. (519-965-3732) (Fax: 519-966-7677) Bus. Agt.: Richard Edwards.

**M 634 SUDBURY/NORTH BAY, ON**-Keith Clausen, P.O. Box 68, Noughton, ON, POM 2M0. (705-665-1163) (Fax: 705-692-9726) Bus. Agt.: Jamie Adamson (705-788-2447) (Fax: 705-788-2448).

**ICG 667 EASTERN CANADA**-David Rumley, 9 Gloucester St., Toronto, ON, M4Y 1L8. (416-368-0072) (Fax: 416-368-6932) Bus. Agt.: Richard J. Perotto.

**C 669 WESTERN CANADA**-Simon Jori, 3823 Henning Drive, Suite 217, Burnaby, BC, V5C 6P3. (778-330-1669) (Fax: 778-330-1670) Bus. Agt.: Marcus Handman.

**M 680 HALIFAX/DARTMOUTH, NS/SAINT JOHN/ MONCTON/FREDERICTON, NB**-Colin Richardson, P.O. Box 711, Halifax, NS, B3J 2T3. (902-455-5016) (Fax: 902-455-0398) Bus. Agt.: Colin P. Richardson.

**TW,MA&HS 822 TORONTO, ON**-Michael Felix, 511 Adelaide Street West, Toronto, ON, M5V 1T1 (416-782-3518) (Fax: 416-785-5667). Bus. Agt.: Cheryl Batulis, 2 Neilor Crescent, Toronto, M9C 1K4 (416-622-9000) (Fax: 416-622-0900).

**SA&P 828 PROVINCE OF ONTARIO**-Daniela Mazic, P.O. Box 22562-300 Coxwell Avenue, Toronto, ON, M4L 2A0. (416-438-3388) (Fax: 416-438-3388) Bus. Agt.: Katherine Lilley.

**M 848 SYDNEY/GLACE BAY, NS**-David Bailey, 28 Norwood Street, Glace Bay, NS, B1A 3M5. (902-849-4957) Bus. Agt.: David Bailey.

**MPSP 849 ATLANTIC CANADA**-Rod Dominey, 15 McQuade Lake Crescent, 2nd flr., Halifax, NS, B3S 1C4. (902-425-2739) (Fax: 902-425-7696) Bus. Agt.: Gary Vermeir

**MPSP 856 PROVINCE OF MANITOBA**-Rob Rowan, 454 Edmonton St., Winnipeg, MB, R3B 2M3. (204-953-1100) (Fax: 204-953-1109) Bus. Agt.: Maryam Decter.

**TWU 863 MONTREAL, QC**-Faith Halsey, 390 rue des Hirondelles, Beloeil, PQ, J3G 6G7 (514-944-2916). Bus. Agt.: Silvana Fernandez (514-944-2673).



**MPSPT 873 TORONTO, ON**-Kirk Cheney, 1315 Lawrence Ave. East, Unit 104, Toronto, ON, M3A 3R3. (416-368-1873) (Fax: 416-368-8457) Bus. Agt.: Kirk Cheney.

**MPSPT 891 BRITISH COLUMBIA/YUKON TERR.**-Dusty Kelly, 1640 Boundary Road, Burnaby, BC, V5K 4V4. (604-664-8910) (Fax: 604-298-3456) Bus. Agt.: Paul Klassen.

**M 906 CHARLOTTETOWN, PE**-Bill Higgins, P.O. Box 2406, Charlottetown, PE, C1A 8C1. Bus. Agt.: Damon Compton.

**TWU 924 STRATFORD, ON**-Inez Khan, P.O. Box 21151, Stratford, ON, N5A 7V4. (519-949-4040) (Fax: 519-508-0955) Bus. Agt.: Sherri Neeb.

## COLORADO

**S 007 DENVER/BOULDER**-James Taylor, 1475 Curtis Street, Denver, CO 80202. (303-534-2423) (Fax: 303-534-0216) Bus. Agt.: James E. Taylor.

**S 047 PUEBLO**-Bob Krasovec, 1330 W. Abriendo Avenue, Pueblo, 81004. (719-320-6220) Bus. Agt.: Saul Trujillo, 27850 Hwy. 50 East, Pueblo, 81006.

**M 062 COLORADO SPRINGS**-Bryan Patrick, 1828 E. Kiowa Street, Colorado Springs, 80909. (719-520-1059) (Fax: 719-520-1090) Bus. Agt.: Gina Manning.

**S 229 FORT COLLINS, CO./CHEYENNE/LARAMIE, WY.**-Dan Schoonover, P.O. Box 677, Fort Collins, 80522. Bus. Agt.: David Denman (970-226-2292) (Fax: 970-490-2292).

**TWU 719 DENVER**-Elisa Spadi, 12010 West 52nd Place, Unit #7, Arvada, 80002. (303-431-7561) (Fax: 303-431-7561) Bus. Agt.: Steve Davis (303-829-1567) (Fax: 303-948-3414).

## CONNECTICUT

**SM 052 STATES OF CONNECTICUT/NEW YORK/NEW JERSEY/NORTHERN DE./GREATER PA.**-William McGavin, 326 W. 48th Street, New York, NY 10036. (212-399-0980) (Fax: 212-315-1073) Bus. Mgr.: John Ford; Bus. Reps.: John Fundus and Raymond Fortune.

**S 074 SOUTHERN CONNECTICUT**-David Barata, P.O. Box 9075, New Haven, 06532. (203-773-9139) (Fax: 203-516-2398). Bus. Agt.: Jon Damast (203-981-8479).

**S 084 HARTFORD/NEW LONDON/NORTHERN CONNECTICUT**-Joseph Davis, 1145 D New Britain Ave., West Hartford, 06110. (860-233-8821) (Fax: 860-233-8827). Bus. Agt.: William Philbin.

**SS,PC,CC&PA 161 CONNECTICUT/NEW YORK/NEW JERSEY**-Beverly Billin, 630 9th Avenue, #1103, New York, NY 10036. (212-977-9655) (Fax: 212-977-9609) Bus. Agt.: Colleen Donahue.

## DELAWARE

**SM 052 STATES OF NEW YORK/NEW JERSEY/CONNECTICUT/NORTHERN DE./GREATER PA.**-William McGavin, 326 W. 48th Street, New York, NY 10036. (212-399-0980) (Fax: 212-315-1073) Bus. Mgr.: John Ford; Bus. Reps.: John Fundus and Raymond Fortune.

**S 284 WILMINGTON**-Eva Lynne Penn, P.O. Box 1503, Wilmington, 19899-1503. (302-652-4626) (Fax: 302-475-4903) Bus. Agt.: Michael Harrington.

## DISTRICT OF COLUMBIA

**S 022 WASHINGTON, DC/WASHINGTON DC SUBURBS, MD/NORTHERN VIRGINIA**-John Page, 1810 Hamlin Street, NE, Washington, DC 20018. (202-269-0212) (Fax: 202-635-0192) Bus. Agt.: John Brasseur.

**SM&BT 487 MID-ATLANTIC AREA**-Carol Everson, 2031 Clipper Park Road, Suite 105, Baltimore, MD 21211. (410-685-4141) (Fax: 410-685-3939) Bus. Agt.: Rosemarie Levy.

**TWU 772 WASHINGTON**-Sara Butt, P.O. Box 10999, McLean, VA 22102. (571-420-2990) (Fax: 301-322-3125). Bus. Agt.: Linda Boyland.

**E,S&CST 815 WASHINGTON**-Robert E. McFadden, 2512 Cliffbourne Pl., N.W., #2a, Washington, 20009-1512. (202-265-9067) Bus. Agt.: Samuel J. McFadden.

**TBSE 819 WASHINGTON**-Renee Moore, P.O. Box 5745 Friendship Sta., Washington, 20016. (202-966-4110) Bus. Agt.: David Lee.

**T&T 868 WASHINGTON**-Anita Wilkinson, P.O. Box 58129, Washington, 20037. (202-419-9207) Bus. Agt.: Michael Gilotte.

## FLORIDA

**M 060 PENSACOLA/PANAMA CITY/DESTIN**-Robert L. Wilson, P.O. Box 1084, Pensacola, 32591 (850-390-2367) (Fax: 850-455-0135). Bus. Agt.: Steve Brown.

**M 115 JACKSONVILLE/TALLAHASSEE/GAINESVILLE**-Nick Ciccarello, P.O. Box 462, Jacksonville, 32201. (904-723-6070) (Fax: 904-723-6090) Bus. Agt.: Kevin Jackson.

**M 321 TAMPA/CLEARWATER/LAKELAND/ST. PETERSBURG**-Judy Philips, 7211 N. Dale Mabry, #209, Tampa, 33614. (813-931-4712) (Fax: 813-931-7503) Bus. Agt.: Richard McGauley.

**M 412 BRADENTON/SARASOTA**-Michael Verbil, P.O. Box 1307, Tallahassee, 32370. (904-359-1254) (Fax: 904-359-1254) Bus. Agt.: Roy Sorensen (904-914-1553).

**SM 477 STATE OF FLORIDA**-Nancy Flesher, 10705 N.W. 33rd Street, #110, Miami, 33172. (305-594-8585) (Fax: 305-597-9278) Bus. Agt.: William F. Moyses.

**M 500 SOUTH FLORIDA**-Alan Glassman, 1001 NW 62nd Street, Suite 220, Fort Lauderdale, 33309. (954-202-2624) (Fax: 954-772-4713). Bus. Agt.: Alan Glassman.

**ICG 600 INTERNATIONAL CINEMATOGRAPHERS GUILD**-(See also California, Illinois and New York) Alan Gitlin; National Executive Director, Bruce Doering; Central Region Director, John Hilsman, 690 Lincoln Road, Suite 203, Miami Beach 33139 (305-538-9226) (Fax: 305-538-9259). Illinois Office: 901 W. Jackson Blvd., Suite 201, Chicago, IL 60068. (312-243-3841) (Fax: 312-243-4275).

**M 631 ORLANDO/CAPE CANAVERAL/COCOA/MELBOURNE/LAKE BUENA VISTA/DAYTONA BEACH**-Kimberly A. Bowles, 5385 Conroy Road, Suite #200, Orlando, 32811-3719. (407-422-2747) (Fax: 407-843-9170) Bus. Agt.: Michael LaNinfa.

**S 647 NAPLES/FT. MYERS/MARCO ISLAND**-Christopher Grenier, P.O. Box 700, Estero, 33929. (239-498-9090) (Fax: 239-282-1346) Bus. Agt.: Maria Colonna.

**MPVT/LT/AC&GE 780 (See also Illinois)**-Debbie Bedard, 3585 N. Courtenay Pkwy., Suite 4, Merritt Island, FL 32953. (321-453-1018) (Fax: 321-453-1178) Bus. Agt.: Larry Gianneschi.

**EE 835 ORLANDO/DAYTONA BEACH**-Richard Vales, 4403 Vineland Road, Quorum Ctr. B4, Orlando, 32811. (407-649-9669) (Fax: 407-649-1926). Bus. Agt.: Richard Vales.

## GEORGIA

**M 320 SAVANNAH**-Wayne Roelle, P.O. Box 5731, Savannah, 31414. (912-507-8558) (Fax: 208-979-8533) Bus. Agt.: Wayne Roelle.

**SM 479 STATE OF GEORGIA (Except Savannah and Vicinity)**-Terry Moody, 1000 Iris Drive, Suite F, Conyers, 30094. (770-483-0400) (Fax: 770-483-0999) Bus. Agt.: Michael Akins.

**SM 491 SAVANNAH, GA/STATES OF NORTH AND SOUTH CAROLINA**-Andrew Oyaas, 1707 Castle Hayne Road, Wilmington, NC 28401. (910-343-9408) (Fax: 910-343-9448) Bus. Agt.: Jason Rosin.

**S 629 AUGUSTA**-Anthony Capaz, 2314 Washington Road, Augusta, 30904. (706-738-2312) (Fax: 706-738-2312). Bus. Agt.: Bruce Balk.

**M 824 ATHENS**-Margi Flood, P.O. Box 422, Athens, 30603. (706-549-8244) (Fax: 706-549-0828) Bus. Agt.: William Jackson.

**EE 834 ATLANTA**-C. Faye Harper, 500 Bishop Street, NW, Suite F-1, Atlanta, 30318. (404-875-8848) (Fax: 404-875-4578) Bus. Agt.: C. Faye Harper.

**TWU 859 ATLANTA**-Rita Cochran, 2970 Leah Lane, Douglasville, 30135. (770-714-6927) (Fax: 678-838-1456) Bus. Agt.: Sue Cochran.

**S 927 ATLANTA**-Dave Fedack, 449 1/2 Moreland Avenue, Suite 215, Atlanta, 30307. (404-870-9911) (Fax: 404-870-9906) Bus. Agt.: Dave Fedack.

## HAWAII

**M 665 STATE OF HAWAII**-Kay Carter, 875 Waimanu Street, Suite 610, Honolulu, 96813. (808-596-0227) (Fax: 808-591-8213). Bus. Agt.: Donovan K. Ahuna

## IDAHO

**M 093 WALLACE/KELLOGG, ID/SPOKANE, WA**-Jill Scott, P.O. Box 1266, Spokane, 99210. Bus. Agt.: Jacel Evans. Bus. Rep.: Pat Devereau (509-999-5073) (Fax: 208-623-6496).

**S 099 BOISE/NAMPA/CALDWELL/TWIN FALL/SUN VALLEY, ID/STATE OF UTAH**-Susan Foretich, 526 West 800 South, Salt Lake City, UT 84101. (801-359-0513) (Fax: 801-532-6227) Bus. Agt.: Patrick Heltman.

**EE 838 SOUTHERN IDAHO/SALT LAKE CITY, UT**-Kathy Peck, 230 West 200 South, Suite 2220, Salt Lake City, UT 84101 (801-320-0701) (Fax: 801-320-0705) Bus. Agt.: Nancy Trowse.

## ILLINOIS

**S 002 CHICAGO**-Thomas J. Cleary, 216 S. Jefferson Street, Suite 400, Chicago, 60661. (312-705-2020) (Fax: 312-705-2011) Bus. Agt.: Craig P. Carlson.

**S 085 ROCK ISLAND/MOLINE, IL/DAVENPORT, IA**-Rich Harris, P.O. Box 227, Davenport, IA 52805. (563-579-3526) Bus. Agt.: Joseph Goodall.

**MPP,AVE&CT 110 CHICAGO**-Steve Altman, 216 S. Jefferson Street, Suite 203, Chicago, 60661. (312-454-1110) (Fax: 312-454-6110) Bus. Agt.: Steve Altman.

**S 124 JOLIET**-Tim Kelly, P.O. Box 333, Joliet, 60434-0333. (815-546-0124) Bus. Agt.: Lorin Lynch.

**S 138 SPRINGFIELD/JACKSONVILLE**-Richard Meidel, P.O. Box 6367, Springfield, 62708. (217-787-5440) (Fax: 217-787-5440) Bus. Agt.: Noel Dalbey, 2121 Westview Drive, Springfield, 62704. (217-787-5440) (Fax: 217-787-5440).

**M 193 BLOOMINGTON/ NORMAL/ SPRINGFIELD/JACKSONVILLE/ MACOMB/ PEORIA**-Mary Roffers, P.O. Box 172, Bloomington, 61701-0172 (217-201-3969). Bus. Agts.: Tim Noe (Peoria), Chris Fields (Bloomington).

**M 217 ROCKFORD**-Kim Whitmore, P.O. Box 472, Rockford, 61105. (815-670-9264) (Fax: 815-484-1085). Bus. Agt.: Dale Posey.



**M 421 HERRIN/CENTRALIA, IL/CAPE GIRARDEAU, MO**-Thomas Aken, P.O. Box 441, Murphysboro, IL 62966. (618-967-2394) Bus. Agt.: Stephen Parhomski.

**SM 476 CHICAGO**-Mark A. Hogan, 6309 N. Northwest Highway, Chicago, 60631-0490. (773-775-5300) (Fax: 773-775-2477) Bus. Agt.: Mark A. Hogan.

**M 482 CHAMPAIGN/URBANA/DANVILLE/RANTOUL/CHARLESTON/DECATUR**-Richard Hall, P.O. Box 3272, Urbana, 61803-3272. (217-840-9969) (Fax: 217-688-3042) Bus. Agt.: Nancy Manganelli-Bues.

**ICG 600 INTERNATIONAL CINEMATOGRAPHERS GUILD**-(See also California, Florida and New York) Alan Gitlin; National Executive Director, Bruce Doering; Central Region Director, John Hilsman, 901 W. Jackson Blvd., Suite 201, Chicago, IL 60068. (312-243-3841) (Fax: 312-243-4275). Florida Office: 690 Lincoln Road, Suite 203, Miami Beach, FL 33139. (305-538-9226) (Fax: 305-538-9259).

**T&T 750 CHICAGO**-Michael P. Keenan, 446 N. Edgewood, La Grange Park, 60526. (708-579-4305) (Fax: 708-579-4313) Bus. Agt.: Ira S. Alper (847-778-0809) (Fax: 888-799-9973).

**TBSE 762 CHICAGO**-Tom Hoover, P.O. Box 3710, Lisle, 60532 (312-671-7679) Bus. Agt.: Dennis Gates.

**TWU 769 CHICAGO**-Cheryl Weber, 15253 S. Olympic Lane, Lockport, 60441. (847-732-6326) (Fax: 815-836-3407) Bus. Agt.: Shirley Berling.

**MPVT/LT/AC&GE 780 CHICAGO (see also Florida)**-Debbie Bedard, 6301 N. Northwest Highway, Chicago, IL 60631. (773-775-5020) (Fax: 773-775-5771) Bus. Agt.: Larry Gianneschi.

**ADG 800 CENTRAL OFFICE (See also California, New York and North Carolina)**-Gary Baugh, 5256 N. Magnolia, Chicago, IL 60640. (773-805-1521).

**USA829 ILLINOIS REGIONAL OFFICE (See also New York)**-111 North Wabash Avenue, #2107, Chicago, 60602. (312-857-0829) Bus. Agt.: J. Christopher Phillips.

## INDIANA

**S 030 INDIANAPOLIS/KOKOMO/RICHMOND/EARLHAM COLLEGE /LOGANSPORT/ PERU/CONNORSVILLE/ANDERSON/MUNCIE/PORTLAND**-John Baldwin, 1407 East Riverside Drive, Indianapolis, 46202-2037. (317-638-3226) (Fax: 317-638-6126). Bus. Agt.: John Baldwin.

**S 049 TERRE HAUTE**-David G. Del Colletti, 210 Terre Vista Drive, Terre Haute, 47803. (812-243-0524) (Fax: 812-237-3741) Bus. Agt.: David Target.

**S 102 EVANSVILLE**-Mark Fehr, 13 Dreier Blvd., Evansville, 47712 (812-467-0287) (Fax: 812-467-0287). Bus. Agt.: Steve VanMeter.

**M 125 LAKE PORTER/LA PORTE COUNTIES/FORT WAYNE/LAFAYETTE/ FRANKFORT/CRAWFORDSVILLE**-Greg Palmer, 2905 DeKalb St., Lake Station, 46405. (219-718-8038) (Fax: 219-962-1250) Bus. Agt.: Rick D. Wilbanks (219-718-8037).

**S 146 FORT WAYNE**-Steve Tarr, P.O. Box 13354, Fort Wayne, 46868. (260-747-2643) Bus. Agt.: John H. Hinen, Jr.

**O 163 CLARKSVILLE, IN/LOUISVILLE, KY**-Kent L. Green, 125 West Carter Avenue, Clarksville, IN, 47129. (812-282-2716) Bus. Agt.: Larry W. Hopewell, 4703 Wolford Drive, Floyds Knobs, IN, 47119. (812-923-1295).

**M 187 SOUTH BEND/MISHAWAKA/ELKHART/GOSHEN/PLYMOUTH/CULVER, IN/NILES, MI**-Catherine Smith, P.O. Box 474, South Bend, IN 46624. (574-292-1871) (Fax: 574-288-0233) Bus. Agt.: Deborah Mayers.

**O 194 INDIANAPOLIS/ KOKOMO/ LOGANSPORT/ PERU/WABASH/ RICHMOND/ MUNCIE/ PORTLAND**-Stephen A. Beeler, P.O. Box 7055, Greenwood, 46142. (317-507-0717) (Fax: 317-888-5252) Bus. Agt.: Stephen Blair.

**O 373 TERRE HAUTE**-Richard Munn, P.O. Box 9294, Terre Haute, 47808. Bus. Agt.: Richard T. Munn, 8774 N. Kennedy Cir. Dr., Brazil, 47834. (812-446-2722)

**M 618 BLOOMINGTON/BEDFORD/COLUMBUS/FRENCH LICK**-Mark R. Sarris, P.O. Box 552, Bloomington, 47402. (812-331-7472) (Fax: 812-331-8949) Bus. Agt.: Mark R. Sarris.

**TWU 893 INDIANAPOLIS/BLOOMINGTON**-Joanne M. Sanders, 5144 N. Carrollton Avenue, Indianapolis, 46205-1130. (317-283-6040) (Fax: 317-283-2890) Bus. Agt.: Joanne M. Sanders.

## IOWA

**S 042 COUNCIL BLUFFS/SIOUX CITY, IA/OMAHA/FREMONT, NE**-Cassie Moore, P.O. Box 351, Omaha, NE 68101. (402-639-7301) (Fax: 402-731-8284). Bus. Agt.: Bob Lane.

**S 067 DES MOINES/AMES/WAUKEE/MASON CITY**-MaryJo Williams, 897 85th Place, Pleasantville, 50225. (641-842-4703) Bus. Agt.: Ryan Anderson (515-707-8567).

**S 085 DAVENPORT, IA/ROCK ISLAND/MOLINE, IL**-Rich Harris, P.O. Box 227, Davenport, IA 52805. (563-579-3526) Bus. Agt.: Joseph Goodall.

**M 690 IOWA CITY/CEDAR RAPIDS/WATERLOO/DUBUQUE**-Thomas E. Poggenpohl, P.O. Box 42, Iowa City, 52244-0042. (319-594-2690) Bus. Agt.: Roman Antolic.

**TWU 831 COUNCIL BLUFFS, IA/OMAHA, NE**-Alice George Holmes, 22108 Trailridge Blvd., Omaha, NE 68022 (402-289-1914) Bus. Agt.: Betty Hafner.

## KANSAS

**S 031 KANSAS CITY/TOPEKA/LAWRENCE/EMPORIA, KS/KANSAS CITY-ST. JOSEPH, MO**-Dan Pfitzner, 923-A West 17th Street, Kansas City, MO 64108. (816-842-5167) (Fax: 816-842-9481) Bus. Agt.: Gary L. Thomas.

**M 190 WICHITA/HUTCHINSON/EL DORADO**-Tim McCulloch, P.O. Box 3052, Wichita, 67201. (316-267-5927) (Fax: 316-267-5959) Bus. Agt.: Benjamin Juhnke.

**M 464 SALINA**-Kent Buess, P.O. Box 617, Salina, 67401-0617. (785-826-6160). Bus. Agt.: Bill Tuzicka.

## KENTUCKY

**S 017 LOUISVILLE/FRANKFORT/DANVILLE**-George Green, Jr., 119 W. Breckenridge Street, Louisville, 40203. (502-587-7936) (Fax: 502-587-3422) Bus. Agt.: James R. Madison.

**O 163 LOUISVILLE, KY/CLARKSVILLE, IN**-Kent L. Green, 125 West Carter Avenue, Clarksville, IN 47129. (812-282-2716) Bus. Agt.: Larry W. Hopewell, 4703 Wolford Drive, Floyds Knobs, IN 47119. (812-923-1295).

**M 346 LEXINGTON**-Merrill Richardson, P.O. Box 5, Lexington, 40588. (859-291-1921) Bus. Agt.: Donald A. Burton.

**M 369 ASHLAND, KY/HUNTINGTON, WV/IRONTON, OH**-Judy M Chapman, P.O. Box 192, Huntington, WV, 25707. Bus. Agt.: Chestle St. Clair (304-733-0880).

**TWU 897 LOUISVILLE**-Lisa Green, 5204 Saint Gabriel Court, Louisville, 40291. (502-491-1071) (Fax: 502-491-1071) Bus. Agt.: Rita Gliardi.

## LOUISIANA

**S 039 NEW ORLEANS**-Darrell Eik, P.O. Box 19289, New Orleans, 70179. (504-872-2165) (Fax: 504-309-8198) Bus. Agt.: Alan Arthur.

**M 260 LAKE CHARLES/ALEXANDRIA/PINEVILLE/FORT POLK**-George J. Hollier, 3702 Lakeview Drive, Lake Charles, 70605. (337-598-3455) (Fax: 337-598-3455). Bus. Agt.: Todd J. Johnson.

**S 298 SHREVEPORT**-Robbie Mayberry, 715 McNeil Street, Shreveport, 71101. Bus. Agt.: William Gaston (318-423-1756).

**SM 478 STATE OF LOUISIANA/SOUTHERN MISSISSIPPI**-Chandra Miller, 432 N. Anthony St., Suite 305, New Orleans, LA 70119. (504-486-2192) (Fax: 504-483-9961) Bus. Agt.: Michael McHugh.

**M 540 BATON ROUGE**-Patrick A. Acampora, 1852 Hobbiton Rd., Baton Rouge, 70810. (225-275-1891) (Fax: 225-578-4135) Bus. Agt.: H. Hayes Taylor, 16632 Mockingbird Lane, Baton Rouge, 70819.

**M 668 MONROE**-Dan Saterfield, 400 Lee Joyner Expressway, Monroe, 71201. (318-329-2343). Bus. Agt.: Ross Slacks.

**TWU 840 NEW ORLEANS**-Lesly Davi, 11186 Tuttle Road, Hammond, 70403. Bus. Agt.: Bonnie Haase (225-294-3024) (Fax: 225-294-3024).

## MAINE

**S 114 PORTLAND/LEWISTON/AUGUSTA/BANGOR**-Thomas Bull, P.O. Box 993, Portland, 04104 (207-657-7100) (Fax: 207-657-7109). Bus. Agt.: Dave Herrman.

**TBSE 926 AUBURN**-Sarah Quaintance, 99 Danville Corner Rd, Auburn, 04210 (207-782-1800). Bus. Agt.: Sharon Deveau-Handy.

## MARYLAND

**S 019 BALTIMORE**-Steve Wallace, 1111 Park Avenue, Suite L-102, Baltimore, 21201-5651. (410-728-6527) (Fax: 410-728-6849) Bus. Agt.: Bruce Holtman.

**S 022 WASHINGTON DC SUBURBS, MD/ WASHINGTON, DC/NORTHERN VIRGINIA**-John Page, 1810 Hamlin Street, NE, Washington, DC 20018. (202-269-0212) (Fax: 202-635-0192) Bus. Agt.: John Brasseux.

**MPP,O&VT 181 BALTIMORE**-Dave Foreman, 4834 Ridge Road, Baltimore, 21237. (410-668-9545) Bus. Agt.: Karl O. Gilbert.

**SM&BT 487 MID-ATLANTIC AREA**-Carol Everson, 2031 Clipper Park Road, Suite 105, Baltimore, MD 21211. (410-685-4141) (Fax: 410-685-3939) Bus. Agt.: Rosemarie Levy.

**M 591 HAGERSTOWN, MD/FREDERICK, MD/ WAYNESBORO, PA/WINCHESTER, VA/ MARTINSBURG, WV**-Michael E. Clem, 10300 Moxley Road, Damascus, MD 20872. (202-210-5200). Bus. Agt.: John Nichols.

**TBSE 833 BALTIMORE**-James Coxson, P.O. Box 4834, Baltimore, 21211. Bus. Agt.: William Poplovski, 3400 Dunran Road, Baltimore, MD, 21222 (443-831-8181).

**TWU 913 BALTIMORE**-Suzanne Herbert-Forton, 301 Stonewall Rd., Catonsville, 21228. Bus. Agt.: Marybeth Chase, 7427 Watersville Rd., Mt. Airey, 21771. (410-340-0049).

## MASSACHUSETTS

**S 011 BOSTON/WALTHAM**-John Walsh, 152 Old Colony Avenue, South Boston, 02127. (617-269-5595) (Fax: 617-269-6252) Bus. Agt.: John Walsh



**S 053 SPRINGFIELD/PITTSFIELD**-Valentino Larese, P.O. Box 234, Springfield, 01101. (413-530-4747) (Fax: 413-783-9977) Bus. Agt.: Michael Afflitto.

**M 083 NORTH ADAMS**-David Blair, 172 Notch Road, North Adams, 01247-3614. (413-664-4669) Bus. Agt.: David Blair.

**M 096 WORCESTER**-Mark Apholt, P.O. Box 582, Worcester, 01613. (508-929-0378) (Fax: 508-929-0385) Bus. Agts.: Donald R. Apholt, Jr., P.O. Box 212, Oakham, 01068. (508-882-3339).

**O 182 BOSTON/LYNN/SALEM/WALTHAM/BROCKTON**-Stephen Livernash, P.O. Box 390234, Cambridge, 02139 (617-426-1540) Bus. Agt.: Ken Eisenberg.

**O 186 SPRINGFIELD/HOLYOKE/PITTSFIELD**-Geraldine Hanley, 194 Kendall Street, Ludlow, 01056. (413-583-5170) Bus. Agt.: Kenneth A. Hanley.

**M 195 LOWELL, MA./NEW HAMPSHIRE**-Elizabeth Cleveland, P.O. Box 514, Mt. Vernon, NH 03057 (603-566-2510). Bus. Agt.: Joyce Cardoza (603-654-4097) (Fax: 603-654-4098).

**M 232 NORTHAMPTON/AMHERST**-Paul Yager, P.O. Box 96, Deerfield. 01342. (413-687-3679) Bus. Agt.: Ted Hodgen.

**SM 481 NEW ENGLAND AREA**-James MacDonald, 10 Tower Office Park, Suite 218, Woburn, MA 01801. (781-376-0074) (Fax: 781-376-0078) Bus. Agt.: Chris O'Donnell.

**T&T 753 BOSTON**-Diane M. Blaskovich, 8 Admirals Lane, Salem, 01970. (617-407-9222) (Fax: 978-744-7976) Bus. Agt.: Stephen Colburn (617-894-1020).

**TWU 775 BOSTON**-Carol F. Colantuoni, 9 Randolph Road, Stoneham, 02180. (781-438-6338)(Fax: 781-438-6338) Bus. Agt.: Carol F. Colantuoni.

**M 792 PLYMOUTH/CAPE COD**-Robert Woodward Jr, 18 West Pond Road, Plymouth, 02360. (508-747-0248) Bus. Agt.: Maureen Crockett, Box 180 Newton Jct., New Hampshire, VT 03859. (603-382-7348).

## MICHIGAN

**M 026 GRAND RAPIDS/MUSKEGON/BATTLE CREEK/KALAMAZOO/HOLLAND/ST. JOSEPH**-Matthew Taylor, 931 Bridge Street, NW, Grand Rapids, 49504. (616-742-5526) (Fax: 616-742-1088) Bus. Agt.: Stasia Savage.

**S 038 DETROIT/PONTIAC/MT. CLEMENS/PORT HURON**-Edwin J. Miller, 20017 Van Dyke, Detroit, 48234. (313-368-0825) (Fax: 313-368-1151) Bus. Agt.: Calvin Hazelbaker.

**M 187 NILES, MI/SOUTH BEND/ MISHAWAKA/ ELKHART/ GOSHEN/ PLYMOUTH/ CULVER, IN**-Catherine Smith, P.O. Box 474, South Bend, IN 46624. (574-292-1871) (Fax: 574-288-0233) Bus. Agt.: Deborah Mayers.

**MPP, VT&CT 199 DETROIT**-Paul Bratfish, 22707 Dequinder Road, Hazel Park, 48030. (248-399-7864) (Fax: 248-399-7866) Bus. Agt.: Donald M. Lewis.

**S 201 FLINT/OWOSSO**-Edward Hinderer Jr., 967 Mann Avenue, Flint, 48503. (810-767-1580) Bus. Agt.: William Hinderer, 4272 Round House Rd., #6, Swartz Creek, MI 48473 (810-635-4267).

**M 274 LANSING/EAST LANSING/JACKSON/SAGINAW/CADILLAC/NORTH CENTRAL MICHIGAN/TRAVERSE CITY/ALPENA**-John McDaniel, 419 S. Washington Square, Suite 103, Lansing, 48933. (517-374-5570) (Fax: 517-374-5589) Bus. Agt.: William Mihinan.

**M 395 ANN ARBOR/MONROE**-Mark Berg, P.O. Box 8271, Ann Arbor, 48107. (734-845-0550)(Fax: 734-482-0380). Bus. Agt.: Dean Neeb.

**MPP,O& VT 472 FLINT/OWOSSO**-Harold Skinner, II, P.O. Box 90605, Burton, 48509-9998. (810-836-4556) Bus. Agt.: Guy Courts.

**T&T 757 DETROIT**-Tina Bell, 2565 Armada Drive, Auburn Hills, 48326. Bus. Agt.: Frederick Schefsky.

**TWU 786 DETROIT**-Diane McDaniel, 27830 Jefferson, St. Clair Shores, 48081. (586-771-3870) (Fax: 586-771-3870) Bus. Agt.: Beverly Lombart-Ignich.

**SM 812 DETROIT**-John DeMonaco, 20017 Van Dyke, Detroit, 48234. (313-368-0825) (Fax: 313-368-1151) Bus. Agt.: John DeMonaco.

## MID-ATLANTIC AREA

**SM&BT 487 MID-ATLANTIC AREA**-Carol Everson, , 2031 Clipper Park Road, Suite 105, Baltimore, MD 21211. (410-685-4141) (Fax: 410-685-3939) Bus. Agt.: Rosemarie Levy.

## MINNESOTA

**S 013 MINNEAPOLIS/ST. CLOUD/LITTLE FALLS/BRAINERD/ST. JOHN'S UNIVERSITY/ COLLEGE OF ST. BENEDICT/ ST. PAUL**-Royce Jackson, 312 Central Ave. S.E. Rm 398, Minneapolis, 55414. (612-379-7564) (Fax: 612-379-1402) Bus. Agt.: Dirk Ostertag.

**S 032 DULUTH**-James Rigstad, 2011 Garfield Avenue, Superior, WI 54880-2310. (715-392-5805) Bus. Agt.: Al Eastman.

**MPP,O&VT 219 MINNEAPOLIS/ST. PAUL/ST. CLOUD/LITTLE FALLS/BRAINERD/ST. JOHN'S UNIVERSITY**-Davin C. Anderson, 6066 Elm Creek Pkwy., Suite 1161, Minneapolis, 55311. (612-868-9711) Bus. Agt.: Davin C. Anderson.

**M 416 ROCHESTER/AUSTIN/MANKATO/ WINONA**-Edward D. Searles, P.O. Box 9095, Rochester, 55903-9095. (507-288-5197) Bus. Agt.: Paul Sund (507-753-3262).

**SM 490 STATE OF MINNESOTA**-Gary Surber, 312 Central Avenue SE, #398, Minneapolis, 55414. (612-627-0490) (Fax: 612-627-9734) Bus. Agt.: Joe Gallup.

**M 510 MOOREHEAD, MN/FARGO, ND**-James Torok, 702 7th Street, North, Fargo, ND 58102. (701-237-0499) Bus. Agt.: James Torok.

**TBSE 745 MINNEAPOLIS**-Int'l Vice President-in-Charge: Daniel DiTolla, 1430 Broadway 20th Floor, New York, NY 10018 (212-730-1770) (Fax: 212-730-7809).

## MISSISSIPPI

**SM 478 SOUTHERN MISSISSIPPI/STATE OF LOUISIANA**-Chandra Miller, 432 N. Anthony St., Suite 305, New Orleans, LA 70119. (504-486-2192) (Fax: 504-483-9961) Bus. Agt.: Mike McHugh.

**SM 492 NORTHERN MISSISSIPPI/STATE OF TENNESSEE**-Theresa Morrow, P.O. Box 90174, Nashville, TN 37209. (615-386-3492) (Fax: 615-460-7492). Bus. Agt.: Robert Hill.

**M 589 JACKSON/VICKSBURG/NATCHEZ**-Jill Lucas, 1665 Hwy 51, Madison, 39110-9097. (601-856-4374) (Fax: 601-856-2197) Bus. Agt.: Jill Lucas.

**M 616 MERIDIAN**-Jerry Tucker, Jr., P.O. Box 2903, Meridian, 39302-2903. (601-481-5942).

**M 674 BILOXI/GULFPORT**-Darrel Volesky, 6030 S. Vista Drive, Gulfport, 39507. (228-313-6865) Bus. Agt.: Martin G. Elchos.

## MISSOURI

**S 006 ST. LOUIS**-Norma L. West, 1611 S. Broadway, Suite 110, St. Louis, 63104. (314-621-5077) (Fax: 314-621-5709) Bus. Agt.: John T. Beckman, Jr.

**S 031 KANSAS CITY/ST. JOSEPH, MO/KANSAS CITY/TOPEKA/LAWRENCE/EMPORIA, KS**-Dan Pfitzner, 923-A West 17th Street, Kansas City, 64108. (816-842-5167) (Fax: 816-842-9481) Bus. Agt.: Gary L. Thomas.

**MPP,AVE&CT 143 ST. LOUIS**-Miron Vulakh, 5214 Chippewa Street, St. Louis, 63109. (314-351-5600)(Fax: 314-351-5600) Bus. Agt.: William Watkins.

**M 421 CAPE GIRARDEAU, MO/HERRIN/CENTRALIA, IL**-Thomas Aken, P.O. Box 441, Murphysboro, IL 62966. (618-967-2394) Bus. Agt.: Stephen Parhomski.

**SM 493 STATE OF MISSOURI**-Cat Cacciatore, P.O. Box 410151, St. Louis, 63141. (314-469-4931) (Fax: 314-469-4931) Bus. Agt.: Gary Hansen.

**T&T 774 ST. LOUIS**-Mary Althage, 4056 Avenue F, St. Louis, 63123 (314-631-5065). Bus. Agt.: Angie Walsh, (314-647-9424).

**TWU 805 ST. LOUIS**-Kim Stone, 3937 Walsh Street, St. Louis, 63116. (314-351-7184) (Fax: 314-351-7184). Bus. Agt.: Karen Stone, 2433 Romaine Creek, Fenton, MO 63026 (314-712-7013).

**TWU 810 KANSAS CITY**-Judith McElroy, 5113 West 70 Street, Prairie Village, KS 66208. (816-225-6131) Bus. Agt.: Desiree Baird-Storey (913-362-0347).

## MONTANA

**M 240 BILLINGS**-Gretchen Dibble, P.O. Box 545, Billings, 59103. (406-962-3655). Bus. Agt.: Dave Bakker (406-855-1664).

**M 339 MISSOULA/KALISPELL/BUTTE/ ANACONDA/GREAT FALLS/HELENA**-Katherine Matz, P.O. Box 6275, Great Falls, 59406-6275. (406-453-0447) Bus. Agt.: Bruce Bull.

## NEBRASKA

**S 042 OMAHA/FREMONT, NE/COUNCIL BLUFFS/SIOUX CITY, IA**-Cassie Moore, P.O. Box 351, Omaha, NE 68101. (402-639-7301) (Fax: 402-731-8284). Bus. Agt.: Bob Lane.

**M 151 LINCOLN**-Eugene Trausch, P.O. Box 30201, Lincoln, 68503-0201. Bus. Agt.: Tony Polanka (402-465-5045) (Fax: 402-464-8100).

**O 343 OMAHA**-Lynn D. Rogers, 21504 Old Coach Road, Elkhorn, 68022. Bus. Agt.: Jeffrey K. Jenkins (402-676-9166).

**TWU 831 OMAHA, NE/COUNCIL BLUFFS, IA**-Alice George Holmes, 22108 Trailridge Blvd., Omaha, NE 68022 (402-289-1914) Bus. Agt.: Betty Haffner.

## NEVADA

**M 363 RENO/LAKE TAHOE**-Claudia Johnson, 30 Mary St., #14, Reno, 89509. (775-786-2286) (Fax: 775-786-7150) Bus. Agt.: Charlotte Picerno.

**M 720 LAS VEGAS**-Ronald Poveromo, 3000 S. Valley View Boulevard, Las Vegas, 89102. (702-873-3450) (Fax: 702-873-4703). Bus. Agt.: John Hanson.



## NEW ENGLAND AREA

**SM 481 NEW ENGLAND AREA**-James MacDonald, 10 Tower Office Park, Suite 218, Woburn, MA 01801. (781-376-0074) (Fax: 781-376-0078) Bus. Agt.: Chris O'Donnell.

## NEW HAMPSHIRE

**M 195 LOWELL, MA./NEW HAMPSHIRE**-Elizabeth Cleveland, P.O. Box 514, Mt. Vernon, NH 03057 (603-566-2510). Bus. Agt.: Joyce Cardoza (603-654-4097) (Fax: 603-654-4098).

**SM 481 NEW ENGLAND AREA**-James MacDonald, 10 Tower Office Park, Suite 218, Woburn, MA 01801. (781-376-0074) (Fax: 781-376-0078) Bus. Agt.: Chris O'Donnell.

**S 919 HANOVER/LEBANON, NH/BURLINGTON, VT**-Leslie Day, P.O. Box 951, Burlington, 05402-0951 (802-865-0570). Bus. Agt.: Craig Mowery (802-355-4541).

## NEW JERSEY

**S 008 CAMDEN/MERCER COUNTY, NJ/PHILADELPHIA, PA**-Andrew Nolan, 2237 Hartranft Street, Philadelphia, PA 19145. (215-952-2106) (Fax: 215-952-2109) Bus. Agt.: Michael Barnes.

**S 021 NEWARK**-Jacky Riotto, 2933 Vauxhall Rd., Millburn Mall, Vauxhall, 07088. (973-379-9265) (Fax: 908-964-0243) Bus. Agt.: Stanley Gutowski.

**SM 052 STATES OF NEW JERSEY/ NEW YORK/CONNECTICUT/NORTHERN DE. /GREATER PA**-William McGavin, 326 W. 48th Street, New York, NY 10036. (212-399-0980) (Fax: 212-315-1073) Bus Mgr.: John Ford; Bus. Reps.: John Fundus and Raymond Fortune.

**S 059 JERSEY CITY**-Richard Drum, P.O. Box 3122, Secaucus, 07096. (973-769-6187) Bus Agt.: Richard Drum.

**M 077 ATLANTIC CITY/VINELAND**-Thomas M. Bambrick, Jr., P.O. Box 228, Linwood, 08221. (609-317-0958) (Fax: 609-909-9591) Bus. Agt.: Eric Berry.

**SS,PC,CC&PA 161 NEW YORK/ NEW JERSEY/CONNECTICUT**-Beverly Billin, 630 9th Avenue, #1103, New York, NY 10036. (212-977-9655) (Fax: 212-977-9609) Bus. Agt.: Colleen Donahue.

**M 534 MIDDLESEX/MERCER/UNION COUNTIES/OCEAN COUNTY/ASBURY PARK/LONG BRANCH**-Vincent Meli, P.O. Box 722, New Brunswick, 08903. (732-565-9200) (Fax: 732-565-9300) Bus. Agt.: Craig Werner (732-539-4560).

**M 536 RED BANK/FREEHOLD**-Edward Baklarz, 231 Atlantic St., #70, Keyport, 07735. (732-264-5678) Bus. Agt.: Charles Cox.

**M 632 NORTHEAST NEW JERSEY**-Judy Feltus, 205 Robin Road, Suite 202, Paramus, 07652. (201-262-4182) (Fax: 201-262-4138) Bus. Agts.: (Stage) Joe Villani; (Proj.) Patrick Riley.

**TWU 799 CAMDEN, NJ/PHILADELPHIA, PA**-Susan Calaciura, 200 Plymouth Place, Merchantville, NJ 08109. (215-643-1282) (Fax: 856-488-6368) Bus. Agt.: Elisa Murphy, 901 Llanfair Road, Lower Gwynedd, PA 19002.

**CHE 917 ATLANTIC CITY**-Gilda Passarella, 4119 Atlantic Avenue, Atlantic City, 08401. (609-345-0550) (Fax: 609-345-4554) Bus. Agt.: Darrell Stark.

## NEW MEXICO

**M 153 LAS CRUCES, NM/EL PASO, TX**-Ignacio Flores, 3349 Dungan Drive, El Paso, 79925. (915-594-8250) (Fax: 915-886-4900) Bus. Agt.: Scott White.

**M 423 ALBUQUERQUE/ROSWELL/SANTA FE**-Brian Shaffer, P.O. Box 81376, Albuquerque, 87198. (505-250-0994) (Fax: 505-255-1970) Bus. Agt.: Brian Shaffer.

**SM 480 STATE OF NEW MEXICO**-D.L. Herbert De Wing, 1418 Cerrillos Rd., Santa Fe, 87505. (505-986-9512) (Fax: 505-986-9513) Bus. Agt.: Jon Hendry.

**TWU 869 ALBUQUERQUE**-Darlene Jones, 369 Playful Meadows, Rio Rancho, 87144. (505-681-0601) Bus. Agt.: Ann Schreiber (505-247-8474).

## NEW YORK

**S 001 NEW YORK/WESTCHESTER-PUTNAM COUNTIES**-Robert Score, 320 W. 46th Street, New York, 10036. (212-333-2500) (Fax: 212-586-2437) Bus. Agts.: (Theatre) Mickey Fox and Kevin McGarty; (TV) Edward J. McMahon, III and Robert C. Nimmo.

**S 004 BROOKLYN and QUEENS**-Terence K. Ryan, 2917 Glenwood Road, Brooklyn, 11210. (718-252-8777) (Fax: 718-421-5605) Bus. Agt.: Lewis Resnick.

**S 009 SYRACUSE/ROME/ONEIDA/UTICA**-Linda Mack, P.O. Box 617, Syracuse, 13201-0617 (315-625-4131). Bus. Agt.: Keith Russell.

**S 010 BUFFALO**-Charles Gill, 700 Main Street, Suite 200, Buffalo 14202 (716-822-2770) (Fax: 716-634-5529). Bus. Agt.: Gary Syracuse, Jr., 266 Sterling Avenue, Buffalo, NY 14216 (716-822-2770).

**S 014 ALBANY/SCHENECTADY/AMSTERDAM**-Gail E. Farley, P.O. Box 11-074, Albany, 12211. (518-427-1580) (Fax: 518-477-6677) Bus. Agt.: James Anziano.

**S 025 ROCHESTER**-Michael J. Ventrella, 140 Metro Park, Suite 4, Rochester, 14623. (585-427-8974) Bus. Agt.: Thomas F. Mason.

**M 029 TROY**-Richard M. Regnier, Sr., Rd#5-363 Currybush Road, Schenectady, 12306. (518-377-9080) (Fax: 518-372-3176) Bus. Agt.: Richard M. Regnier, Sr.

**SM 052 STATES OF NEW YORK/ NEW JERSEY/CONNECTICUT/NORTHERN DE. /GREATER PA**-William McGavin, 326 W. 48th Street, New York, NY 10036. (212-399-0980) (Fax: 212-315-1073) Bus Mgr.: John Ford; Bus. Reps.: John Fundus and Raymond Fortune.

**S 054 BINGHAMTON**-Daniel Sonnen, 1405 Livingston Place, Vestal, 13850. (607-777-2531) Bus. Agt.: William Carroll, P.O. Box 271, Binghamton, 13905. (607-427-6336).

**TBSE 100 NEW YORK**-Rich Rahner, 191 Monell Avenue, Islip, 11751 (203-876-8566) Bus. Agt.: Greg Calvin.

**M 121 NIAGARA FALLS/BUFFALO**-John Scardino Jr., 47 Coburg Street, Buffalo, 14216. (716-834-6372) (Fax: 716-836-3084) Bus. Agt.: John Scardino, Jr.

**SS,PC,CC&PA 161 NEW YORK/ NEW JERSEY/CONNECTICUT**-Beverly Billin, 630 9th Avenue, #1103, New York, NY 10036. (212-977-9655) (Fax: 212-977-9609) Bus. Agt.: Colleen Donahue.

**M 266 JAMESTOWN/CHAUTAUQUA, NY/WARREN COUNTY, PA**-Eric Bolling, 3673 Pleasant Avenue, Jamestown, NY 14701. (716-664-9448) Bus. Agt.: Gordon R. Pugh (716-761-6944).

**M 289 ELMIRA/HORNELL/WATKINS/ITHACA/ CORNING/CORTLAND/BINGHAMTON**-Florence Lovell, P.O. Box 1147, Elmira, 14902. Bus. Agt.: David Bailey, 713 Riverside Ave., Elmira, 14904. (607-733-7159) (Fax: 607-733-7159).

**MPP,VT, & AC 306 NEW YORK**-Hugo F. Capra, 545 West 45th St., 2nd fl., New York, 10036. (212-956-1306) (Fax: 212-956-9306) Bus. Agts.: (Proj.) Barry Garfman; (Stage) Miriam Pollock.

**M 311 MIDDLETOWN/NEWBURGH/ KINGSTON**-Franklin DenDanto, P.O. Box 192, Washingtonville, 10992. (845-692-4358) (Fax: 845-692-0020) Bus. Agt.: Michael R. Brennan, 6 Virginia Street, Middletown, NY 10941 (845-692-4358).

**O 324 ALBANY**-Stanley Blakeman, 171 East Side Drive, Ballston Lake, 12019 (518-399-2085). Bus. Agt.: John K. Hill.

**S 340 NASSAU/SUFFOLK COUNTIES OF LONG ISLAND**-Michael Brogden, P.O. Box 160, Jericho, 11753. (516-457-6778) (Fax: 212-391-8320) Bus. Agt.: Brian J. Frankel.

**M 353 PORT JERVIS/SULLIVAN COUNTY**-John B. Senter, III, P.O. Box 1432, Monticello, 12701. (212-677-5711) Bus. Agt.: John B. Senter, III.

**M 499 POUGHKEEPSIE**-Michael Finamore, P.O. Box 499, Narrowsburg, 12764. (914-489-2439) (Fax: 845-331-7461) Bus. Agt.: Sandi Bohle, 180 Downs Street, Kingston, NY 12401 (914-489-2439).

**M 524 GLENS FALLS/SARATOGA**-Bob Medve, 12 Sunset Drive, Queensbury, 12804. (518-745-5954) (Fax: 518-745-5954) Bus. Agt.: Edward Smith (518-623-4427) (Fax: 518-623-4427).

**M 592 SARATOGA SPRINGS**-James Farnan, 47 County Route 76, Stillwater, 12170. (518-727-3735). Bus. Agt.: Rick Daus.

**ICG 600 INTERNATIONAL CINEMATOGRAPHERS GUILD**-(See also California, Florida and Illinois) Alan Gitlin; National Executive Director, Bruce Doering; Eastern Region Director, Chaim Kantor, 80 Eighth Ave., 14th Fl., New York, NY 10011. (212-647-7300) (Fax: 212-647-7317).

**MPP, O&VT 640 NASSAU/SUFFOLK COUNTIES OF LONG ISLAND**-Timothy King, 600 Johnson Avenue, Suite C-5, Bohemia, 11716. (631-750-6588) (Fax: 631-750-6589) Bus. Agt.: Robert B. Gottschalk, Jr.

**M 645 ROCKLAND COUNTY**-Ronald Jacobsen, 12 Kim Marie Place, Newburgh, 12550. (914-772-8186) Bus. Agt.: Brian McGarity, 85 South William Street, Pearl River, NY 10965 (718-813-2025).

**MPEG 700 MOTION PICTURE EDITORS GUILD (see also California)**-Diane Adler; Exec. Dir.-Ron Kutak, 7715 Sunset Blvd., #200, Los Angeles, CA 90046. (323-876-4770) (Fax: 323-876-0861) Asst. Exec. Dir.: Paul Moore, 145 Hudson Street, Suite 201, New York, NY 10013. (212-302-0700) (Fax: 212-302-1091).

**LF/VT 702 NEW YORK**-William Andrews, 542 Eastbrook Road, Ridgewood, NJ 07450. (212-869-5540) (Fax: 212-302-1091) Bus. Agt.: Joseph Truglio (201-447-0753).

**M 749 MALONE**-Michael S. Brashaw, 601 Ford Street, Ogdensburg, 13669. (315-393-2873) (Fax: 315-393-2880) Bus. Agt.: Samuel Rapin.

**T&T 751 NEW YORK**-Lawrence Paone, 1430 Broadway, 8th floor, New York, 10018. (212-302-7300) (Fax: 212-944-8687) Bus. Rep.: Lawrence Paone.

**TWU 764 NEW YORK AND VICINITY**-Rochelle Friedman, 545 West 45th Street, 2nd fl., New York, 10036. (212-957-3500) (Fax: 212-957-3232) Bus. Agts.: (Legit) Bart Daudelin; (Film) Frank Gallagher.

**TWU 783 BUFFALO**-Patricia J. Marchewka, 124 Brentwood Drive, So. Cheektowaga, 14227-3271. (716-812-0783) Bus. Agt.: Mary Jo Witherell, 27 Warburton Pl., Buffalo 14223.

**T&T 788 ROCHESTER**-Floyd R. Schilstra, 1142 Bay Road, Webster, 14580 (585-787-2934). Bus. Agt.: John Giffen.

**TBSE 794 NEW YORK**-Ryan Priest, P.O. Box 154, Lenox Hill Station, New York, 10021. (646-596-3539) .Bus. Agt.: Timothy Daughtry.



**MAHS 798 NEW YORK**-Joseph Cuervo, 152 West 24th Street, New York, NY 10011. (212-627-0660) (Fax: 212-627-0664). Bus. Agt.: Daniel Dashman.

**ADG 800 NORTHEAST OFFICE (See also California, Illinois and North Carolina)**-Stan Harris, 90 West St., #23H, New York, NY 10006 (646-246-3722).

**TBSE 821 ELMIRA**-Norman Stull, 101 E. Water Street, Elmira, 14901 (607-733-5518) Bus. Agt.: Jon Shaban.

**EE/BPBD 829 NEW YORK**-John V. McNamee Jr, 386 Park Avenue South, 13th floor, New York, 10016. (212-679-1164) (Fax: 212-679-1421).

**M 842 ONEONTA/COOPERSTOWN/SIDNEY/DELHI/COBLESKILL/WALTON**-William Pierce, 1504 Burnt Hill Road, West Fulton, 12194. (518-827-8428). Bus. Agt.: William Pierce.

**TWU 858 ROCHESTER**-Kathleen Olson, 21 Wimbledon Rd., Rochester, 14617. (585-338-7915). Bus. Agt.: Anne Bowes.

**ATPAM 18032 NEW YORK**-Nick Kaledin, 62 West 45th Street, Suite 901, New York, 10036. (212-719-3666) (Fax: 212-302-1585). Bus. Agt.: Gerry Parnell.

**USA 829 NEW YORK REGIONAL OFFICE**-Carl Baldasso, 29 West 38th Street, 15th fl., New York, NY 10018. (212-581-0300) (Fax: 212-977-2011) Bus. Agt.: Cecilia Friedrichs.

## NORTH CAROLINA

**M 278 ASHEVILLE**-Roger I. Briant, P.O. Box 2071, Asheville, 28802. (828-545-0641) Bus. Agt.: Michael D. Rhodes.

**M 322 CHARLOTTE/GREENVILLE**-Randy Raynard, 6101 Idlewild Road, Suite 322, Charlotte, 28212. (704-537-8329) (Fax: 704-367-9436) Bus. Agt.: Bruce T. Grier (704-367-9435).

**M 417 DURHAM/CHAPEL HILL/RALEIGH**-Amy O'Donnell, P.O. Box 28152, Raleigh, 27611. (919-422-0866) (Fax: 919-477-5833) Bus. Agt.: Rob McIntire.

**SM 491 STATES OF NORTH AND SOUTH CAROLINA/SAVANNAH, GA**-Andrew Oyaas, 1707 Castle Hayne Road, Wilmington, NC 28401. (910-343-9408) (Fax: 910-343-9448) Bus. Agt.: Jason Rosin.

**M 574 GREENSBORO/BURLINGTON/HIGH POINT**-Neil Welch, Jr., P.O. Box 8575, Greensboro, 27419. (336-451-0390) (Fax: 336-638-3625) Bus. Agt.: Bill Daves, 4025 Lamond Drive, Winston-Salem, 27101. (336-852-0660).

**M 635 WINSTON-SALEM/LEXINGTON/THOMASVILLE**-Henry Grillo, P.O. Box 15338, Winston-Salem, 27113-0338. (336-399-7382) Bus. Agt.: Patrick O'Kelly.

**ADG 800 SOUTHEAST OFFICE (See also California, Illinois and New York)**-John D. Kretschmer, 605 Fitzgerald Dr., Wilmington, NC 28405. (910-443-3838).

## NORTH DAKOTA

**M 510 FARGO, ND/MOOREHEAD, MN**-James Torok, 702 7th Street, North, Fargo, ND 58102. (701-235-3840) Bus. Agt.: James Torok.

## OHIO

**S 005 CINCINNATI/HAMILTON/FAIRFIELD/SPRINGDALE/OXFORD**-Kevin G. Eviston, 35 E. 7th Street, Suite 501, Cincinnati, 45202. (513-721-1302) (Fax: 513-721-0023) Bus. Agt.: Thomas Guidugli.

**S 012 COLUMBUS/NEWARK/MARYSVILLE/DELAWARE**-Joe McCutcheon, 566 E. Rich Street, Columbus,

43215. (614-221-3753) (Fax: 614-221-0078) Bus. Agt.: Richard Shack, 2581 East Fifth Avenue, Columbus, OH 43219.

**S 024 TOLEDO/LIMA/MARION/BOWLING GREEN/TIFFIN/FINDLAY**-Sandra Cassaubon, 435 S. Hawley Street, Toledo, 43609. (419-244-6320) (Fax: 419-244-6325). Bus. Agt.: John Palsa.

**S 027 CLEVELAND/ASHTABULA/LORAIN/ELYRIA/SANDUSKY/ERIE COUNTY**-Michael Lehane, 1422 Euclid Avenue, Suite 721, Cleveland, 44115-1902 (216-621-9537) (Fax: 216-621-3518) Bus. Agt.: Dave Vacca.

**S 048 AKRON/CANTON/MASSILLON/ALLIANCE/MANSFIELD**-Helen Louie, 678 North Main Street, Akron, 44310. (330-374-0480) (Fax: 330-376-2721) Bus. Agt.: Helen Louie.

**M 064 STEUBENVILLE, OH/WHEELING, WV**-Tony Assaro, P.O. Box 292, Wheeling, WV 26003-0041. Bus. Agt.: Frank Scarnecchia (304-639-2516) (Fax: 304-242-6134).

**S 066 DAYTON/SPRINGFIELD/DARKE/MIAMI AND CHAMPAIGN COUNTIES**-Keith J. Thomas, P.O. Box 75, Dayton, 45401. (937-415-0066) (Fax: 937-415-0067) Bus. Agt.: Kenneth G. Rice.

**S 101 NILES/WARREN/YOUNGSTOWN**-David Rees, P.O. Box 362, Youngstown, 44501. (330-747-9305) Bus. Agt.: John Osborne.

**MPP,O&VT 160 CLEVELAND/ASHTABULA/LORAIN/ELYRIA/SANDUSKY/ERIE COUNTY**-John Galinac, 8358 Munson Road, Suite 104, Mentor, 44060. (440-255-3160) (Fax: 440-255-3119) Bus. Agt.: John Galinac.

**SM 209 STATE OF OHIO**-Jonathan Andrews, 1422 Euclid Avenue, Suite 721, Cleveland, 44115-1902. (216-621-9537) (Fax: 216-621-3518) Bus. Agt.: Kenneth McCahan.

**M 369 IRONTON, OH/HUNTINGTON, WV/ASHLAND, KY**-Judy M Chapman, P.O. Box 192, Huntington, WV 25707. Bus. Agt.: Chestle St. Clair (304-733-0880).

**TWU 747 COLUMBUS**-Julia Johnson, 4791 Summit Road, SW, Pataskala, 43062. (740-927-1696) Bus. Agt.: C. Wayne Cossin, 1954 Indianola Ave., Columbus, 43201 (614-298-8071).

**T&T 756 CLEVELAND**-Glenn Barry, 17157 Rabbit Run Dr., Strongsville, 44136. (440-238-7711) (Fax: 440-238-6963) Bus. Agt.: Thomas Patton.

**TWU 864 CINCINNATI**-Jean Mueller, 2643 Highland Avenue, Cincinnati, 45219. (513-861-5300) (Fax: 513-861-5301) Bus. Agt.: Peter A. Diamond.

**TWU 883 CLEVELAND**-Diane Burke, 4689 Georgette Ave., N. Olmsted, 44070. (440-734-4883) (Fax: 440-734-3588) Bus. Agt.: Diane Burke.

**TWU 886 DAYTON**-Sharleen Rafferty, P.O. Box 124, Dayton, 45401-0124. Bus. Agt.: Cynthia Closser.

## OKLAHOMA

**S 112 OKLAHOMA CITY**-Tina Saxton, 511 Couch Drive, Oklahoma City, 73102. (405-231-0025) (Fax: 405-231-0056) Bus. Agt.: Stephen Rysted.

**S 354 TULSA/PONCA CITY**-Paul Clear, P.O. Box 354, Tulsa, 74101. (918-496-7722) (Fax: 918-496-7725) Bus. Agt.: Steve Brown.

**M 387 LAWTON/OKLAHOMA CITY**-Homer L. Hawkins, 4226 SE Ford Road, Lawton, 73501. (580-355-1599) Bus. Agt.: Barry Leday, 35 NW 28th, Lawton, OK 73505. (580-248-0830).

**TWU 904 TULSA**-Lloyd Roberts, P.O. Box 563, Tulsa, 74101. (918-369-9041) (Fax: 918-369-9041) Bus. Agt.: Marcia Holland (918-369-3687).

## OREGON

**M 028 PORTLAND/SALEM**-Pat Chard, 4949 S.E. 26th Ave., Portland, 97202. (503-295-2828) (Fax: 503-230-7044) Bus. Agt.: Chris Bateman.

**SM 488 PACIFIC NORTHWEST**-Linda Bloom, 5105 SW 45th Avenue, Portland, OR 97221. (503-232-1523) (Fax: 503-232-9552) Bus. Agt.: (Oregon) Charles A. Carlsen; (Washington) Robert Riggs.

**M 675 EUGENE/CORVALLIS/BEND**-Virginia Sands, P.O. Box 12217, Eugene, 97440. (541-344-6306) Bus. Agt.: Rocky Haffner.

**TBR&SE 793 PACIFIC NORTHWEST**-Dave Bishop, P.O. Box 94282, Seattle, WA, 98124. (877-680-4853). Bus. Agt.: Todd Gordon.

## PACIFIC NORTHWEST

**SM 488 PACIFIC NORTHWEST**-Linda Bloom, 5105 SW 45th Avenue, Portland, OR 97221. (503-232-1523) (Fax: 503-232-9552) Bus. Agt.: (Oregon) Charles A. Carlsen; (Washington) Robert Riggs.

**TBR&SE 793 PACIFIC NORTHWEST**-Dave Bishop, P.O. Box 94282, Seattle, WA, 98124. (877-680-4853). Bus. Agt.: Todd Gordon.

## PENNSYLVANIA

**S 003 PITTSBURGH/NEW CASTLE**-Shawn W. Foyle, P.O. Box 352, Pittsburgh, 15230. (412-281-4568) (Fax: 412-281-4571) Bus. Agt.: Robert J. Brown.

**S 008 PHILADELPHIA, PA/CAMDEN/MERCER COUNTY, NJ**-Andrew Nolan, 2237 Hartranft Street, Philadelphia, 19145. (215-952-2106) (Fax: 215-952-2109). Bus. Agt.: Michael Barnes.

**SM 052 STATES OF NEW YORK/ NEW JERSEY/ CONNECTICUT/NORTHERN DE. /GREATER PA.**-William McGavin, 326 W. 48th Street, New York, NY 10036. (212-399-0980) (Fax: 212-315-1073) Bus Mgr.: John Ford; Bus. Reps.: John Fundus and Raymond Fortune.

**S 082 WILKES BARRE**-Michael Marancik, P.O. Box 545, Wilkes-Barre, 18703 (570-824-1665). Bus. Agt.: Joseph K. Jacobs, Jr. (570-824-4260).

**S 097 READING**-David Sterner, P.O. Box 7511, Reading, 19603-7511. Bus. Agt.: Russell Hoffman (484-955-3009).

**S 098 HARRISBURG/HERSHEY/CARLISLE**-F. Joseph Spackman, P.O. Box 266, Hershey, 17033-0266. (717-991-4411) Bus. Agt.: Chester Ross.

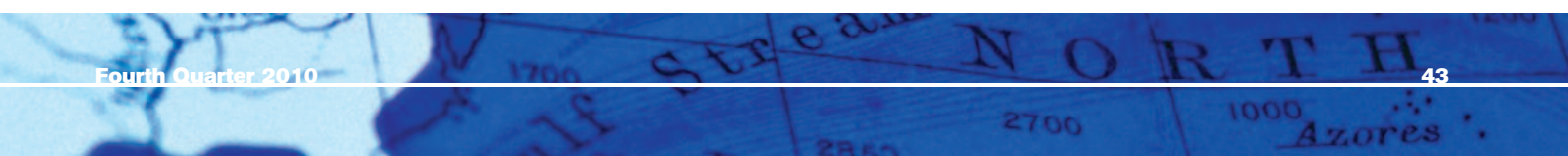
**S 113 ERIE**-Sonia Ferrante, P.O. Box 557, Erie, 16512. (814-882-7763) Bus. Agt.: Kenneth Marchant.

**M 152 HAZELTON**-Nicholas St. Mary, 403 Lori Drive, Beaver Meadows, 18216. (570-459-1602) (Fax: 570-453-0887) Bus. Agt.: Nicholas J. St. Mary.

**S 200 ALLENTOWN/EASTON/STROUDSBURG/BETHLEHEM**-Frank lafrate, P.O. Box 1723, Bethlehem, 18016. (610-867-0658) (Fax: 610-867-0658) Bus. Agt.: Eric Wills.

**M 218 POTTSVILLE/MAHANAY CITY/SHENANDOAH/LANSFORD/SHAMOKIN**-Robert Van Horn, 107 Village Road, Orwigsburg, 17961. (570-366-0629) Bus. Agt.: Robert Spiess, 17 Rose Avenue, Port Carbon, 17965. (570-622-5720).

**M 266 WARREN COUNTY, PA/ JAMESTOWN/CHAUTAUQUA, NY**-Eric Bolling, 3673 Pleasant Avenue, Jamestown, NY 14701. (716-664-9448) Bus. Agt.: Gordon R Pugh (716-761-6944).





## SOUTH CAROLINA

**M 283 HANOVER/YORK COUNTY/GETTYSBURG/LANCASTER COUNTY**-Judi S. Miller, 1927 Queenswood Drive, L-205, York, 17403. (717-846-4314). Bus. Agt.: Charles Reynolds.

**M 329 SCRANTON/PITTSTON**-Patricia Martin, 1266 O'Neil Highway, Dunmore, 18512. Bus. Agt.: Don Martin (570-650-3607).

**SM 489 GREATER PITTSBURGH AREA**-Cassie Ross Eccles, P.O. Box 100056, Pittsburgh, 15233. (412-403-4890) (Fax: 412-820-2621) Bus. Agt.: Charles Eccles.

**M 591 WAYNESBORO, PA/HAGERSTOWN, MD/FREDERICK, MD/WINCHESTER, VA/MARTINSBURG, WV**-Michael E. Clem, 10300 Moxley Road, Damascus, MD 20872. (202-210-5200). Bus. Agt.: John Nichols.

**M 627 SOUTHWEST PENNSYLVANIA (excluding West Alexander)**-Pat Gianella, 321 Fingal Street, Pittsburgh, 15211. (412-431-0264) (Fax: 412-431-0264) Bus. Agt.: Pat A. Gianella.

**M 636 LEWISTOWN/STATE COLLEGE/HUNTINGTON/ALTOONA/WILLIAMSPORT/JOHNSTOWN/INDIANA/SUNBURY/LEWISBURG/BLOOMSBURG/SELINGROVE/INDIANA**-Roger Tharp, IV, P.O. Box 394, State College, 16804. (814-571-4321) Bus. Agt.: Fred Park, Jr. (814-883-0769).

**T&T 752 PHILADELPHIA**-Tara Suppa, P.O. Box 70, Rummene, NJ 08078. (215-431-5184) Bus. Agt.: Jerry Kelly.

**TWU 787 PITTSBURGH**-Deborah Termini, 9 Beltzhoover Ave., Pittsburgh, 15210-1009. (412-728-0503) (Fax: 412-471-7787) Bus. Agt.: Roza Martinovic.

**TWU 799 PHILADELPHIA/CAMDEN, NJ**-Susan Calaciura, 200 Plymouth Place, Merchantville, NJ 08109. (215-643-1282) (Fax: 856-488-6368) Bus. Agt.: Elisa Murphy, 901 Llanfair Road, Lower Gwynedd, PA 19002.

**TBSE 804 PHILADELPHIA**-Thomas Baginski, 210 Locust Street, #6AW, Philadelphia, 19106 (215-922-4594). Bus. Agt.: Debbie Harris.

**TBSE 820 PITTSBURGH**-David Ferry, P.O. Box 22365, Pittsburgh, 15222-0365. (724-733-1236) Bus. Agt.: Marji Murphy.

**T&T 862 PITTSBURGH**-Nancy Regan, 655 Penn Avenue, Pittsburgh, 15222. (412-456-7026) Bus. Agt.: Luke Doyle.

**TBSE 902 JOHNSTOWN/ALTOONA**-Bob Hess, 49 Old Hickory Lane, Johnstown, 15905. (814-255-7600) Bus. Agt.: Joe McGinty.

## PUERTO RICO/VIRGIN ISLANDS

**M 494 PUERTO RICO/U.S. VIRGIN ISLANDS**-Mitzy Ann Ramirez-Suarez, 259 Chile Street, Suite D, San Juan, PR 00918 (787-764-4672) (Fax: 787-765-3459). Bus. Agt.: Luis Estrella.

## RHODE ISLAND

**M 023 STATE OF RHODE ISLAND**-John Brennan, 30 Printery Street, Providence, 02904. (401-225-2308) Bus. Agt.: Patrick Ryan, 6 Driftwood Drive, Barrington, RI 02806.

**SM 481 NEW ENGLAND AREA**-James MacDonald, 10 Tower Office Park, Suite 218, Woburn, MA 01801. (781-376-0074) (Fax: 781-376-0078) Bus. Agt.: Chris O'Donnell.

**TW, MA&HS 830 STATE OF RHODE ISLAND**-Jacqueline Keegan, 10 South Bend Street, Pawtucket, 02860. (401-489-0886) Bus. Agt.: Frances Howe, 85 Pine Hill Road, North Scitvate, 02857. (401-647-9333).

**M 333 CHARLESTON/MYRTLE BEACH**-Michael Coffey, P.O. Box 31921, Charleston, 29417-1921. (843-744-4434) (Fax: 843-744-7336) Bus. Agt.: George Aytes.

**M 347 COLUMBIA**-Vivian Vandegrift, P.O. Box 8876, Columbia, 29202 (803-394-1896) (Fax: 866-925-3475) Bus. Agt.: James Harwell (803-240-0111).

**SM 491 STATES OF SOUTH AND NORTH CAROLINA/SAVANNAH, GA**-Andrew Oyaas, 1707 Castle Hayne Road, Wilmington, NC 28401. (910-343-9408) (Fax: 910-343-9448) Bus. Agt.: Jason Rosin.

## SOUTH DAKOTA

**S 220 SIOUX FALLS**-Terry Bader, P.O. Box 2040, Sioux Falls, 57101. (605-261-2639) Bus. Agt.: Dave Schreck.

**M 503 MITCHELL/HURON**-Wade R. Strand, 25798 409th Street, Mitchell, 57301. (605-996-7533) Bus. Agt.: Tony Palli (605-996-1591).

**M 731 RAPID CITY/BLACK HILLS AREA**-Gary Wallace, P.O. Box 2358, Rapid City, 57709 (605-545-2516). Bus. Agt.: Joe Kern.

## TENNESSEE

**S 046 NASHVILLE**-Deborah McCarley, 211 Donelson Pike, #202/203, Bldg A, Nashville, 37214-2932. (615-885-1058) (Fax: 615-885-5165) Bus. Agt.: Michael J. Gilbert.

**S 069 MEMPHIS**-Allen Byassee, 3340 Poplar Avenue, Suite 129, Memphis, 38111. (901-327-4994) (Fax: 901-327-8626). Bus. Agt.: Allen Byassee.

**S 140 CHATTANOOGA**-Robert Wills, P.O. Box 132, Chattanooga, 37401. (423-645-9251) (Fax: 423-757-5326) Bus. Agt.: Chris Keene.

**S 197 KNOXVILLE/MARYVILLE/ALCOA/GATLINBURG**-Charles J. Flenniken, P.O. Box 946, Knoxville, 37901. (865-428-6583) Bus. Agt.: Ronald Carrell.

**SM 492 STATE OF TENNESSEE/NORTHERN MISSISSIPPI**-Theresa Morrow, 4610 Charlotte Pike, Nashville, TN 37209. (615-386-3492) (Fax: 615-460-7492). Bus. Agt.: Robert Hill.

**M 699 JOHNSON CITY/KINGSPOUR, TN/BRISTOL, VA**-Joseph Washburn, P.O. Box 442, Unicoi, TN 37692. (423-741-7434) Bus. Agt.: Shelby Gene Coffey (423-741-8353).

**TWU 825 MEMPHIS**-Dorothy L. Clark, 1472 Kinilwood, Memphis, 38134. (901-386-3429) (Fax: 901-382-7832) Bus. Agt.: Dorothy Clark.

**TWU 894 KNOXVILLE**-Leslie Percelly, P.O. Box 14653, Knoxville, 37914. (865-659-9701) (Fax: 865-546-2135) Bus. Agt.: Roland Harkness.

**TWU 915 NASHVILLE**-Barbara W. Sullivan, P.O. Box 383, Hermitage, 37076 (615-883-8023) (Fax: 615-851-6055). Bus. Agt.: Judy Resha (615-851-6055).

## TEXAS

**S 051 HOUSTON/GALVESTON**-Scott Firth, 3030 North Freeway, Houston, 77009. (713-697-3999) (Fax: 713-697-0222) Bus. Agt.: Butch Lange.

**S 076 SAN ANTONIO**-Carl Lenhart, 206 San Pedro, #306, San Antonio, 78205 (210-223-1428) (Fax: 210-225-6115) Bus. Agt.: Raymond G. Sewell.

**S 126 FORT WORTH/ARLINGTON/DENTON/GAINESVILLE/GRAPEVINE**-Jim Brady, P.O. Box 185178, Fort Worth, 76181. (817-929-1926) (Fax: 817-284-0968) Bus. Agt.: Dale Domm.

**S 127 DALLAS/GRAND PRAIRIE/MCKINNEY**-Senita Peck, 2710 Live Oak Street, Dallas, 75204. (214-742-4741) (Fax: 214-747-4792) Bus. Agt.: Carl Labry.

**M 153 EL PASO, TX/LAS CRUCES, NM**-Ignacio Flores, 3349 Dunganvar Drive, El Paso, 79925. (915-594-8250) (Fax: 915-886-4900) Bus. Agt.: Scott White.

**M 183 BEAUMONT/PORT ARTHUR/ORANGE**-Marie Pinner, 681 Ridgewood Drive, Pt. Neches, 77651. (409-626-1880) (Fax: 409-729-0578) Bus. Agt.: Larry Allen.

**M 205 AUSTIN**-Bon V. Davis, P.O. Box 142, Austin, 78767. (512-371-1217) Bus. Agt.: Jon Maloy.

**O 330 FORT WORTH/DENTON/GAINESVILLE**-Coleman Bennett, P.O. Box 146, Weatherford, 76086. (817-598-1517) Bus. Agt.: Coleman Bennett.

**M 331 TEMPLE/KILLEEN/BRYAN/WACO**-Darrell Dyer, P.O. Box 424, Killeen, 76540. (254-535-1256) Bus. Agt.: William Sproul.

**M 378 WICHITA FALLS**-Richard Lehman, 3188 Rifle Range Road, Iowa Park, 76367. (940-592-9753) Bus. Agt.: Richard Lehman.

**SM 484 STATE OF TEXAS**-Jason Keene, 1514 Ed Bluestein Blvd., #106, Austin, 78721 (512-385-3466) (Fax: 512-385-3370) Bus. Agt.: Stephen Beasley.

**M 604 CORPUS CHRISTI/HARLINGEN/McALLEN/BROWNSVILLE**-John Jones, P.O. Box 260356, Corpus Christi, 78426. (361-548-0472) Bus. Agt.: Simon Zambrano.

**TBSE 796 STATE OF TEXAS**-Frank Trevino, P.O. Box 70826, Houston, 77270. Bus. Agt.: Andrew Benz.

**TWU 803 DALLAS/FORT WORTH**-Vicki Ruth Cole-Perrin, P.O. Box 570574, Dallas, 75357 (817-832-9090). Bus. Agts.: (Dallas) Patsy F. Neumann (214-352-8418) (Fax: 214-352-8418); (Fort Worth) Kathy Neel Gentry (817-834-4256) (Fax: 817-834-4256).

**M 865 ODESSA/MIDLAND/LUBBOCK**-Lamont Furlow, 9372 W. University Blvd., Odessa, 79764. (432-381-2500) (Fax: 432-530-2223) Bus. Agt.: Lamont Furlow.

**TWU 896 HOUSTON**-Kathleen Pecha, P.O. Box 130774, Houston, 77219-0774. (281-686-5548) (Fax: 713-928-6731) Bus. Agt.: Glinda Anderson.

**AMPE 920 DALLAS/FORT WORTH**-Paul Thompson, 4841 W. Royal Lane, Irving, 75063 (972-929-1913) (Fax: 972-929-3651). Bus. Agt.: Marvin Davis.

## UTAH

**S 099 STATE OF UTAH/BOISE/NAMPA/CALDWELL/TWIN FALL/SUN VALLEY, IDAHO**-Susan Foretich, 526 West 800 South, Salt Lake City, UT 84101. (801-359-0513) (Fax: 801-532-6227) Bus. Agt.: Patrick Heltman.

**EE 838 SALT LAKE CITY, UT/SOUTHERN IDAHO**-Kathy Peck, 230 West 200 South, Suite 2220, Salt Lake City, UT 84101 (801-320-0701) (Fax: 801-320-0705) Bus. Agt.: Nancy Trowse.

## VERMONT

**SM 481 NEW ENGLAND AREA**-James MacDonald, 10 Tower Office Park, Suite 218, Woburn, MA 01801. (781-376-0074) (Fax: 781-376-0078) Bus. Agt.: Chris O'Donnell.

**S 919 BURLINGTON, VT/HANOVER/LEBANON, NH**-Leslie Day, P.O. Box 951, Burlington, VT 05402-0951 (802-865-0570). Bus. Agt.: Craig Mowery (802-355-4541).

## VIRGINIA

**S 022 NORTHERN VIRGINIA/WASHINGTON DC SUBURBS, MD/WASHINGTON, DC**-John Page, 1810 Hamlin Street, NE, Washington, DC 20018. (202-269-0212) (Fax: 202-635-0192) Bus. Agt.: John Brasseux.

**M 055 ROANOKE/SALEM/DANVILLE/LYNCHBURG/BLACKSBURG/RADFORD/ STAUNTON**-Russell Prusak, P.O. Box 12424, Roanoke, 24025. (540-362-5164) (Fax: 540-853-5845). Bus. Agt.: James A. Nelson (540-353-1013).

**S 087 RICHMOND/PETERSBURG/CHARLOTTESVILLE/EMPORIA**-Robert D. Walton, P.O. Box 100, Sandston 23150. Bus. Agt.: John Fulwider (804-564-6698) (Fax: 804-746-1601).

**M 264 NEWPORT NEWS/HAMPTON/WILLIAMSBURG**-Trustees: Int'l Representatives: Mark Kiracofe and Scott Harbinson, P.O. Box 9124, Hampton, 23670. (757-838-9045) (Fax: 757-838-1066).

**S 285 NORFOLK/CHESAPEAKE/PORTSMOUTH/VIRGINIA BEACH**-Cristina Evans, 5307 E. Virginia Beach Blvd., Suite 128, Norfolk, 23502. Bus. Agt.: Dale Lee Evans (757-237-5058).

**SM&BT 487 MID-ATLANTIC AREA**-Carol Everson, 2031 Clipper Park Road, Suite 105, Baltimore, MD 21211 (410-685-4141) (Fax: 410-685-3939) Bus. Agt.: Rosemarie Levy.

**M 591 WINCHESTER, VA/HAGERSTOWN, MD/FREDERICK, MD/WAYNESBORO, PA/MARTINSBURG, WV**-Michael E. Clem, 10300 Moxley Road, Damascus, MD 20872. (202-210-5200). Bus. Agt.: John Nichols.

**M 699 BRISTOL, VA/JOHNSON CITY/KINGSPORT, TN**-Joseph Washburn, P.O. Box 442, Unicoi, TN 37692. (423-741-7434) Bus. Agt.: Shelby Gene Coffey (423-741-8353).

## WASHINGTON

**S 015 SEATTLE/EVERETT/OLYMPIA/ANACORTES/MARYSVILLE/TACOMA/ BREMERTON/ BELLINGHAM/MT. VERNON/SEDRO WOOLEY/PORT ANGELES/ BURLINGTON/ CONCRETE/ STANWOOD/ LONGVIEW**-Noel Clayton, 2800 1st Avenue, Room 231, Seattle, 98121. (206-441-1515) (Fax: 206-448-5325) Bus. Agt.: Paul Bigman.

**M 093 SPOKANE, WA/WALLACE KELLOGG, ID**-Jill Scott, P.O. Box 1266, Spokane, WA 99210. Bus. Agt.: Jacel Evans. Bus. Rep.: Pat Devereau (509-999-5073) (Fax: 208-623-6496).

**SM 488 PACIFIC NORTHWEST**-Linda Bloom, 5105 SW 45th Avenue, Portland, OR 97221. (503-232-1523) (Fax: 503-232-9552) Bus. Agt.: (Oregon) Charles A. Carlsen (503-232-1523); (Washington) Robert Riggs.

**TBR&E 793 PACIFIC NORTHWEST**-Dave Bishop, P.O. Box 94282, Seattle, WA., 98124. (877-680-4853). Bus. Agt.: Todd Gordon.

**TWU 887 SEATTLE**-Rita M. Brown, 2800 1st Avenue, #229, Seattle, 98121. (206-443-9354) (Fax: 206-448-5325) Bus. Agt.: Delia Mulholland.

## WEST VIRGINIA

**M 064 WHEELING, WV/STUEBENVILLE, OH**-Tony Assaro, P.O. Box 292, Wheeling, WV 26003-0041. Bus. Agt.: Frank Scarnecchia (304-639-2516) (Fax: 304-242-6134).

**S 271 CHARLESTON**-Craig Colhoun, P.O. Box 75323, Charleston, 25375. (304-561-7910) (Fax: 304-357-7556). Bus. Agt.: Brock Comer.

**M 369 HUNTINGTON, WV/ASHLAND, KY/**

**IRONTON, OH**-Judy M. Chapman, P.O. Box 192, Huntington, WV 25707. Bus. Agt.: Chestle St. Clair (304-733-0880).

**M 578 NORTH CENTRAL WEST VIRGINIA**-R.A. Nethken, P.O. Box 293, Morgantown, WV 26507. Bus. Agt.: William Delbridge (703-868-3154) (Fax: 304-293-3550).

**M 591 WINCHESTER, VA/HAGERSTOWN, MD/FREDERICK, MD/WAYNESBORO, PA/MARTINSBURG, WV**-Michael E. Clem, 10300 Moxley Road, Damascus, MD 20872. (202-210-5200). Bus. Agt.: John Nichols.

## WISCONSIN

**S 018 MILWAUKEE/WAUKESHA**-James Lujak, 230 W. Wells St., Ste. 405, Milwaukee, 53203. (414-272-3540) (Fax: 414-272-3592) Bus. Agt.: Peter Misko.

**M 141 LACROSSE**-Trygve Zielke, N 2528 Baker Road, La Crosse, 54601. (608-787-7667) (Fax: 608-787-0610) Bus. Agt.: William Timm.

**M 251 MADISON/COLUMBIA/SAUK COUNTY**-Brooks McGrath, 1602 South Park Street, #224, Madison, 53715. (608-616-0251) (Fax: 608-251-6023) Bus. Agts.: (Stage) Chris Gauthier; (Oper.) Tim Romano.

**M 470 OSHKOSH/FOND DU LAC/GREEN BAY/WISCONSIN RAPIDS/ MARSHFIELD/WAUSAU**-Richard Comfort, P.O. Box 3351, Oshkosh, 54911. (866-426-4707) Bus. Agt.: Stephen Dedow.

**TWU 777 MILWAUKEE**-William Balfanz, 3619 N. 86th Street, Milwaukee, 53222-2816. (414-462-6214). Bus. Agt.: Beverly Jaeger, W346 N5708 North Lake Drive, Oconomowoc, 53066 (262-567-1863) (Fax: 262-567-1863).

## WYOMING

**S 229 CHEYENNE/LARAMIE, WY/FORT COLLINS, CO**-Dan Schoonover, P.O. Box 677, Fort Collins, CO 80522. Bus. Agt.: David Denman (970-226-2292) (Fax: 970-490-2292).

**M 426 CASPER**-Robert H. Wilson, P.O. Box 353, Casper, 82602-0353. (307-234-3970) Bus. Agt.: Gary R. Vassos.

## Local Secretaries and Business Agents of the Special Department Locals

(Unless otherwise specified, street address or post office box number listed is in city shown in bold-face type after local number.)

Reference Letters:

**AAE** Amusement Area Employees

**AE** Arena Employees

**AFE** Arena Facility Employees

**AMTS** Admissions, Mutual Ticket Sellers

**B** Back Room, Film Exchange Employees

**BPTS** Ball Park Ticket Sellers

**F** Front Office, Film Exchange Employees

**MT** Mail Telephone Order Clerks

**T** Theatre Employees - Special Departments

**TSA** Ticket Sales Agents

## CALIFORNIA

**T B18 SAN FRANCISCO**-Christine Costello, 965 Mission St., Suite 207, San Francisco, 94103. (415-974-0860) (Fax: 415-974-0852) Bus. Agt.: Christine Costello.

**T B32 SAN JOSE-SANTA CLARA COUNTY**-Carol Jossi, P.O. Box 2832, Santa Clara, 95055. Bus. Agt.: Nancy Williams.

**T B66 SACRAMENTO**-Doris Goodwin, P.O. Box 19063, Sacramento, 95819. (916-486-4809) (Fax: 916-482-8178) Bus. Agt.: Richard Allen.

**AAE B192 HOLLYWOOD**-Frank Treppa, 10999 Riverside Dr., #301, N. Hollywood, 91602. (818-509-9192) (Fax: 818-509-9873).

**CALIFORNIA SPECIAL BRANCH**-Michael Miller, Jr., 10045 Riverside Drive, Toluca Lake, 91602. (818-980-3499) (Fax: 818-980-3496).

## CANADA

**T B173 TORONTO/HAMILTON**-Lloyd Ricketts, 8 Lowry Square, Scarborough, Ontario M1B 1N6 (416-724-9067). Bus. Agt.: Chastity Brooker, 187 Park Street, South, Apt. 15E, Hamilton, ON L8P 3E9.

**T B848 GLACE BAY, NS**-David Bailey, 28 Norwood Street, Glace Bay, NS, B1A 3M5. (902-849-4957) Bus. Agt.: Patricia Pace, 26 Pitt St., Glace Bay, NS, B1A 2B7.

**T B898 ST. JOHN'S, NL**-Todd Leawood, P.O. Box 947, Mt. Pearl, NL, A1N 2X3. (709-745-8653) (Fax: 709-745-7374) Bus. Agt.: Todd Leawood.

**T B906 CHARLOTTETOWN, PE**-Larry Arbing, 145 Richmond St./Conf Ctr Arts, Charlottetown, PE, CIA 1J1. (902-628-1864) (Fax: 902-566-4648).

## COLORADO

**T B7 DENVER**-Jan Miller, 1475 Curtis St., Denver, 80202. (303-534-2423) (Fax: 303-534-0216).

## DISTRICT OF COLUMBIA

**TSA B868 WASHINGTON**-Veciva Tobias, 2500 Virginia Ave., N.W., #308, Washington, 20037. (202-416-8521) Bus. Agt.: Antonio Bullock.

## FLORIDA

**AE AE938 JACKSONVILLE**-Charles Bennett, 1000 Water Street, Jacksonville, 32204 (904-879-1236) Bus. Agt.: David Moore.

## ILLINOIS

**T B46 CHICAGO, IL/MILWAUKEE, WI**-Steve Altman, 216 S. Jefferson Street, Suite 203, Chicago, 60661. (312-454-1110) (Fax: 312-454-6110) Bus. Agt.: Anthony M. Spano.

## INDIANA

**T B194 INDIANAPOLIS**-Stephen P. Blair, P.O. Box 7055, Greenwood, 46142. (317-507-0717) (Fax: 317-888-5252) Bus. Agt.: Stephen Blair.

## MASSACHUSETTS

**T B4 BOSTON**-Florence Lewis, P.O. Box 120277, Lafayette Station, Boston, 02112. (617-328-4128) (Fax: 617-868-8194) Bus. Agt.: Beverly McCormack.



**APE B935 WORCESTER**-Mike McKenzie, 24 Toria Heights Road, Oxford, 01540 (508-943-3626). Bus. Agt.: Ivar Carlson (508-248-0845).

## MICHIGAN

**T B179 DETROIT**-Frances Hemler, 26803 Warner, Warren, 48091. (586-481-3479) (Fax: 586-754-6883). Bus. Agt.: John Nesbitt.

## MINNESOTA

**T B26 MINNEAPOLIS-ST. PAUL**-International Officer-in-Charge: Timothy Magee, 20017 Van Dyke, Detroit, MI 48234 (313-368-0825) (Fax: 313-368-1151).

## MISSOURI

**T B2 ST. LOUIS**-Robert Horan, 1611 S. Broadway, Suite 108, St. Louis, 63104 (314-647-6458). Bus. Agt.: Robert Young, 2647 Meadowlane Drive, Granite City, IL 62040. (314-503-3706).

## NEW YORK

**T B90 ROCHESTER**-Rick Welch, 100 Lakecrest Avenue,

Rochester, 14612. (585-415-8585) (Fax: 585-724-7667) Bus. Agt.: Mike Povia.

**MT B751 NEW YORK**-Katherine Lowell, P.O. Box 20561, New York, 10129. (212-239-6226) (Fax: 212-239-5801) Bus. Agt.: Curtis Bunche.

**BPTS F72 NEW YORK**-Michael A. Byrnes, 15 Mill Road, South Farmingdale, 11735 (516-658-1384) (Fax: 516-454-0188). Bus. Agt.: Michael A. Byrnes.

**APE AE936 ALBANY**-Cory Straker, 51 South Pearl Street, Albany, 12207. (518-487-2267) (Fax: 518-487-2013) Bus. Agt.: Thomas Mink.

## OHIO

**T B27 CLEVELAND**-Patrick Duffy, 1422 Euclid Avenue, Suite 721, Cleveland, 44115-1902. (216-621-9537) (Fax: 216-621-3518) Bus. Agt.: Toni Burns.

**T B38 CINCINNATI**-Jay Brewer, 252 Stokesay St., Ludlow, KY 41016. (859-291-3393) Bus. Agt.: Thom Brannock.

**T B148 AKRON**-Tracey Sommer, 345 South Avenue, Tallmadge, 44278 (330-634-0884) Bus. Agt.: Omar Banks.

**AMTS B754 CINCINNATI**-Karla Lang, 3739 Fallen Tree Way, Amelia, 45254. (513-373-7297) Bus. Agt.: Robert Fields.

## OREGON

**T B20 PORTLAND**-Daniel Lyons, 4949 S.E. 26th Ave., Portland, 97202. (503-230-1138) (Fax: 503-230-7044) Bus. Agt.: Bambi Ooley (503-230-1138).

## PENNSYLVANIA

**T B29 PHILADELPHIA**-Antoinette Enoch, P.O. Box 54508, Philadelphia, PA 19148. (267-357-5360). Bus. Agt.: Myra Pettigrew.

## TEXAS

**T B184 HOUSTON**-Gloria Martinez, 3030 North Freeway, Houston, 77009 (713-697-3999) (Fax: 713-697-0222). Bus. Agt.: Denise Fabry.

## WISCONSIN

**T B46 CHICAGO, IL/MILWAUKEE, WI**-Steve Altman, 216 S. Jefferson Street, Suite 203, Chicago, 60661. (312-454-1110) (Fax: 312-454-6110) Bus. Agt.: Anthony M. Spano.

## DISTRICT SECRETARIES

**District No. 1 (Montana, Idaho, Oregon, Washington & Alaska)**-Delia Mulholland, 2800 First Avenue, Suite 229, Seattle, WA 98121 (206-478-8877) Web site: <http://www.districtone.com>; Email: [district.one@twu887.org](mailto:district.one@twu887.org).

**District No. 2 (California, Nevada, Arizona & Hawaii)**-Ed Brown, 10061 Riverside Drive, Suite 825, Toluca Lake, CA 91602. (818-303-4351) Web site: [www.iadistrict2.org](http://www.iadistrict2.org); Email: [ebrown@iadistrict2.org](mailto:ebrown@iadistrict2.org)

**District No. 3 (Maine, New Hampshire, Vermont, Massachusetts, Rhode Island & Connecticut)**-James E. Flanders, 152 Old Colony Avenue, South Boston, MA 02127. (617-268-5595) (Fax: 617-269-6252).

**District No. 4 (Pennsylvania, Delaware, Maryland, Virginia, West Virginia and District of Columbia)**-John Page, 1810 Hamlin Street, NE, Washington, D.C. 20018-2459. (301-943-2908) (Fax: 202-635-0192) Email: [iatse-d4@comcast.net](mailto:iatse-d4@comcast.net)

**District No. 5 (Wyoming, Colorado, Utah & New Mexico)**-Susan N. Jones, 8159 Ventana Azul Ave., NW, Albuquerque, NM 87114. (505-280-1517).

**District No. 6 (Texas, Oklahoma & Arkansas)**-Stuart Hale, 4821 Elsby, Dallas, TX 75209. (214-352-2046) (Fax: 214-747-4792).

**District No. 7 (Tennessee, Alabama, Georgia, North Carolina, South Carolina, Mississippi & Louisiana)**-Andrew Oyaas, P.O. Box 472, Tuckasegee, NC 28783 (828-421-8123) (Fax: 828-293-1140). Email: [iadistrict7@gmail.com](mailto:iadistrict7@gmail.com).

**District No. 8 (Michigan, Indiana, Ohio & Kentucky)**-Rick Madison, 119 West Breckinridge Street, Louisville, KY 40203 (502-587-7936) (Fax: 502-587-3422). Email: [iatse17@bellsouth.net](mailto:iatse17@bellsouth.net).

**District No. 9 (Wisconsin, Iowa, Illinois, Missouri, Minnesota, North Dakota, South Dakota, Nebraska & Kansas)**-Ira Alper, P.O. Box 762, Rosemont, IL 60018 (847-778-0809) (Fax: 888-799-9973).

**District No. 10 (New York, New Jersey)**-John K. Hill, 171 East Side Drive, Ballston Lake, NY 12019 (518-399-2085) (Fax: 518-384-1817). Email: [jhill11@nycap.rr.com](mailto:jhill11@nycap.rr.com)

**District No. 11 (Ontario, Quebec, Prince Edward Island, Nova Scotia, New Brunswick & Newfoundland)**-Cheryl Batulis, 2 Neilor Crescent, Toronto, ON M9C 1K4 (416-622-8555) (Fax: 416-620-5041) Email: [iad11@bellnet.ca](mailto:iad11@bellnet.ca)

**District No. 12 (Manitoba, Saskatchewan, Alberta & British Columbia)**-Barny Haines, 202-128 James Avenue, Winnipeg, MB R3B 0N8 (204-943-4634) (Fax: 204-943-8394). Email: [i.a.d12@allstream.net](mailto:i.a.d12@allstream.net)

**District No. 14 (Florida, Puerto Rico, U.S. Virgin Islands)**-Kimberly Bowles, 5385 Conroy Road, Suite 200, Orlando, FL 32811 (407-422-2747) (Fax: 407-843-9170) Email: [kabowles@iatselocal631.com](mailto:kabowles@iatselocal631.com)

# College Prep



## UNION MEMBERS SAVE ON COLLEGE PREPARATION TEST

Union Plus College Test Preparation discounts help union families save 15% to 60%\* on college readiness courses from The Princeton Review — including classroom instruction, online courses and private tutoring.

### Get Ready For College:

- Maximize SAT®, ACT®, GRE®, GMAT®, LSAT® and MCAT® scores.
- Online courses to help understand the financial aid and college admissions processes.
- Private tutoring programs.

### The Princeton Review Advantage:

- Guaranteed\*\* results with proven score-raising strategies.
- Courses delivered by The Princeton Review's highly trained instructors.
- Extensive online resources.

Want to determine your prep needs? Try a FREE practice test and find out with a detailed score analysis at [UnionPlus.org/CollegePrep](http://UnionPlus.org/CollegePrep).

\* This offer may not be combined with any other offer and cannot be used by previously enrolled students.

\*\* Visit [PrincetonReview.com/Guarantee](http://PrincetonReview.com/Guarantee) for details.

Test names are the trademarks of their respective owners, who are not affiliated with The Princeton Review or Union Plus. The Princeton Review is not affiliated with Princeton University.



To enroll or learn more call **1-888-243-7737** or visit

**UnionPlus.org/CollegePrep**



# Resolve

To ring in the New Year with union member **savings!**



**IT'S RESOLUTION TIME...** the perfect time to take control and get your life into better shape. This year, resolve to take full advantage of your union's benefits. There's no better way to **stretch your hard-earned paycheck** and enrich your life both on and off the job. Check out the special savings and customized services available only to union members. Here are some of the ways your union benefits can help you make a strong start this New Year.

## SHAPE UP your body and mind

- Shed holiday pounds and high rates with union discounts at more than 8,000 **health clubs** nationwide, including Bally Total Fitness, select Gold's Gyms and other top **fitness centers**.
- Save up to 40% on **movie tickets**.
- Read about something new. Find great selections and bargain prices at **Powell's Book Store**, the largest unionized Internet bookseller.

## FIX your finances

- Get **FREE credit counseling** and **budget advice** from professionals carefully chosen to protect the interests of union workers.
- Save 15% on all myFICO **credit score products**, including credit reports and personalized score explanation.
- Check our easy-to-use loan payment calculators and other financial tools to **get out of debt faster** and make smart decisions about your financing your mortgage, cars and lifestyle choices.
- Find out how to **correct errors on credit reports** and qualify for **lower rates** on credit cards and loans.

## IMPROVE your connections

- Save **15%\*** on AT&T monthly wireless services. **1.** At your local **AT&T store**; Visit [UnionPlus.org/ATT](http://UnionPlus.org/ATT) to find a store. Then download the discount coupon and proof of membership form from the website and take both — along with union ID — to your local AT&T store. (Not available at authorized AT&T dealers or kiosks.); **2. Online** at [UnionPlus.org/ATT](http://UnionPlus.org/ATT). Purchase services and find specials on phones. The Union Plus discount FAN# is 3508840.

\*Credit approval and new two-year service agreement required. Additional lines for family plans, unlimited plans, the \$15 Dataplus 200Mb plan or data plans on additional lines, and Unity Plans or plans combining land line and wireless are not eligible. Other conditions and restrictions apply. This offer is available only to qualified union members and retired union members. Union identification is required.

To learn more about the **benefits**, and **savings** available to you visit,

**UnionPlus.org**

